



Turkish Coffee Machine

User Manual



TCM 5448 B

EN



01M-7466000202-4825-03
3589800202 Rev: AD

Please read this manual first!

Dear Customer,

Thank you for choosing a Beko product. We want you to get the most out of this appliance which has been manufactured with state of the art technology. Please make sure you read and understand this guide and supplementary documentation fully before use and keep it as a reference. If you give the appliance to someone else, give them this user manual as well. Observe all warnings and information in this guide and follow the instructions.

Symbols and their meanings

The following symbols are used throughout this guide:



Important information and useful tips for using the appliance.



WARNING: Warnings about dangerous situations concerning safety of life and property.



Food-grade appliance.



Electric shock warning.



WARNING: Do not immerse the appliance, the power cord or the plug in water or in any other liquids.

CONTENTS

1 Important safety and environmental instructions 4

- 1.1 General safety4
- 1.2 Compliance with the WEEE regulations and waste disposal7
- 1.3 Packaging information7
- 1.4 Compliance with RoHS Directive7

2 Your Turkish coffee machine 8

- 2.2 Control Panel.9

3 Operation 10

- 3.1 First operation. 10
- 3.2 Cooking 10
- 3.3 Amounts 14
- 3.4 Notifications 18

4 Cleaning and care 19

- 4.1 Cleaning 19
 - 4.1.2 Descaling 20
 - 4.1.3 Pot Cleaning 20
- 4.2 Storage. 20
- 4.3 Transportation and handling 21
- 4.4 Important points for energy saving . . . 21
- 4.5 Sleep Mode 21

1 Important safety and environmental instructions

This section contains safety instructions to prevent hazards that can result in injury or property damage.

Failure to follow these instructions will void any warranty.

1.1 General safety

- This appliance complies with international safety standards.
- Do not use this appliance outdoors and in the bathroom.
- No liability or warranty claims are accepted for damage caused by misuse or improper transportation of the appliance.
- Never try to remove or disassemble assembled parts of the appliance.
- Use only original parts or parts recommended by the manufacturer.
- Use the appliance always on a stable, flat, clean, dry and non-slip surface.
- Do not start the coffee brewing process without pouring water into the brewing pot.
- Do not put anything other than coffee, sugar and water into the brewing pot.
- Do not use the brewing pot to drink your Turkish coffee.
- Due to its design features, steam and odour may occur in the heater of your appliance during first-time use. This is normal. It will disappear after a few uses.
- Do not move the appliance when there is liquid in the brewing pot or when the appliance is hot.
- Brewing pot and internal brewing surface warm up during the use. For this reason, do not touch brewing surface and brewing pot during and after use (until it cools down).
- Some hot steam may occur over the brewing pot during coffee brewing process, avoid coming into contact with these parts against the risk of being affected from hot steam.
- Avoid coming into contact with hot surfaces and use the brewing pot by holding it only from its carrying handle.
- Make sure the appliance is off before moving it.

1 Important safety and environmental instructions

- This appliance must be connected to a household-type circuit leak protection fuse of a maximum of 30 mA for added protection.
- Use the appliance with an earthed plug.
- If the power cord or the appliance gets damaged, stop using the appliance to avoid a hazardous situation and ensure that the appliance is replaced by its manufacturer or authorized service or a qualified personnel at the same level.
- Do not use the appliance with an extension cord.
- Dry the brewing pot slot before connecting to the mains and putting the parts in place.
- Do not immerse the appliance, the power cord or the plug in water or in any other liquids, do not hold it under running water.
- Do not touch the appliance or the appliance plug with damp or wet hands.
- Place the appliance so that the power plug is always at an accessible position.
- To avoid damage to the power cord, prevent it from being pinched, crimped or rubbed against sharp edges. Keep power cord away from heated surfaces and open flame.
- While using the appliance, make sure that there is no risk of its power cord being pulled by mistake or tripping someone up.
- Unplug the appliance if a malfunction occurs.
- Before cleaning the appliance, unplug it and do not clean the appliance when it is in use.
- Do not pull on the cord to remove the plug from the socket and do not wrap the cord around the appliance.
- Your mains power supply should be in align with the specified information on the type tag of the appliance.
- Do not use in flammable or combustible environments or in or near places containing flammable or combustible materials.

1 Important safety and environmental instructions

- Do not use the appliance near or on heat sources (furnace, barbecue, radiator, stove etc.).
- Keep the appliance away from sources of steam and avoid using it in excessively steamy environments.
- Do not use the brewing pot on any heater other than the appliance (stove, etc.).
- This device is intended to be used in household and similar applications such as the following places:
 - Staff kitchen areas in shops, offices and other working environments,
 - Farm houses,
 - Areas used by customers in motels and hotels, and other residential settings,
 - Bed and Breakfast establishments.
- The appliance can only be used to prepare coffee.
- It is recommended to be extremely careful when using the device near children and people with limited physical, emotional, or mental capacity.
- This appliance can be used by children aged 8 years and over and persons with reduced physical, sensory or mental capabilities, or lack of experience and knowledge if they have been given supervision or instruction concerning the safe use of the appliance and understand the hazards involved. Children should not play with the appliance.
- Children should not clean and maintain the appliance unless they are aged 8 or over and are under adult supervision.
- If you store packaging materials, keep them away from children.
- This appliance should not be used by children. Store the appliance and its electrical cord out of the reach of children.
- Make sure that you supervise the children and they do not play with the appliance.
- Caution: To prevent damage to the appliance do not use alkaline cleaning agents when cleaning, use a soft cloth and a mild agent.
- The coffee machine must not be placed in a cabinet when in use.

1 Important safety and environmental instructions

- Misuse of this appliance can result in injury.
- The surface of the heating element remains hot after use and the outside of the appliance may retain heat.

1.2 Compliance with the WEEE regulations and waste disposal



This product complies with EU WEEE Directive (2012/19/EU). This product bears a classification symbol for waste electrical and electronic equipment (WEEE).

This symbol indicates that this product shall not be disposed with other household wastes at the end of its service life. Used device must be returned to official collection point for recycling of electrical and electronic devices. To find these collection systems please contact to your local authorities or retailer where the product was purchased. Each household performs important role in recovering and recycling of old appliance. Appropriate disposal of used appliance helps prevent potential negative consequences for the environment and human health.

1.3 Packaging information

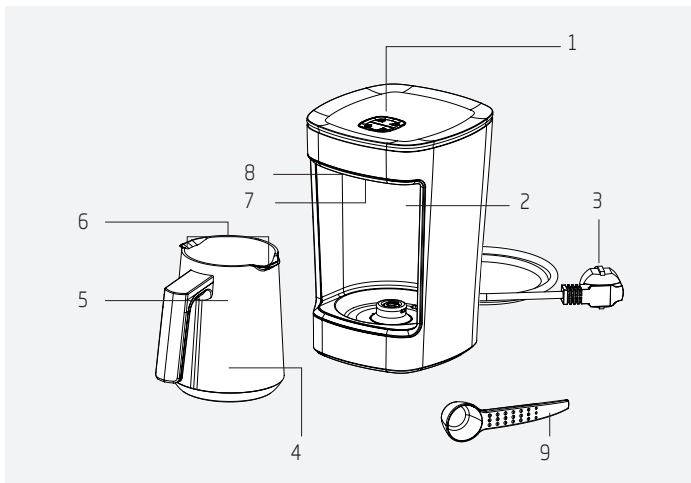


The appliance's packaging is made of recyclable materials in accordance with the National Legislation. Do not dispose of the packaging waste with the household waste or other wastes, dispose of it in the packaging collection areas specified by local authorities.

1.4 Compliance with RoHS Directive

The product you have purchased complies with EU RoHS Directive (2011/65/EU). It does not contain harmful and prohibited materials specified in the Directive.

2 Your Turkish coffee machine



1. Panel for selecting Classic Turkish coffee, Roasted Turkish coffee, Milk drinks, Milk heating and Lukewarm milk functions
2. Brewing pot slot
3. Mains power cord
4. Ceramic brewing pot
5. Maximum level indicator (Within the brewing pot)
6. Double sided drainage opening
7. Brewing detection sensor
8. Heat detection sensor.
9. Measuring spoon

2.1 Technical data

Current: Max 3A

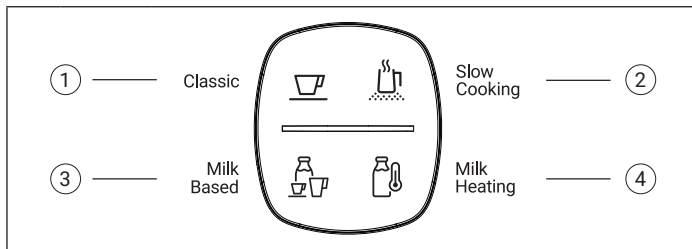
Power: 480-580 W


Voltage: 220-240 V AC ~, 50-60 Hz
Manufacturer reserves the right to make technical and design changes.

The values provided with the appliance or its accompanying documents are laboratory readings in accordance with the respective standards. These values may differ depending on the use and ambient conditions.

2 Your Turkish coffee machine

2.2 Control Panel

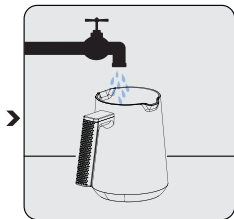
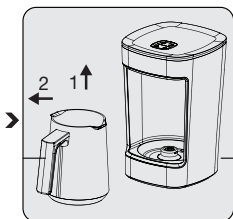
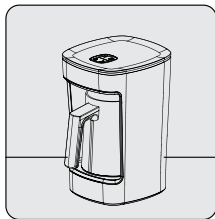


1		Classic Prepares up to 5 cups of plain Turkish coffee brewed in the traditional way.
2		Slow Cooking Prepares up to 5 cups of Turkish coffee with the traditional taste of coffee cooked on embers.
3		Milk Based Milky Turkish Coffee: Prepares up to 3 cups of traditional Turkish coffee with milk. Hot Chocolate: Prepares hot chocolate.
4		Milk Heating Single touch: Hot Milk (65-80C°) Press and hold for 3 seconds: Warm Milk (45-55C°)

3 Operation

3.1 First operation

Make sure your appliance is standing upright on a stable, flat, clean, dry and non-slip surface.



Keep the appliance in an upright position and place on a level, clean and dry floor.

First lift the brewing pot (4) up slightly from its slot (2) and then remove it.

Clean the inside of the brewing pot (4) by washing it out with water. Never immerse it in the water.



- Rinse it with clean water at least for four times without adding coffee.
- For producing a delicious coffee, make sure that the inside of the brewing pot is dry and clean.

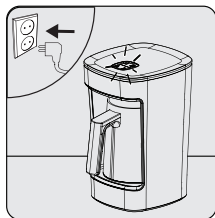
3 Operation

3.2 Cooking

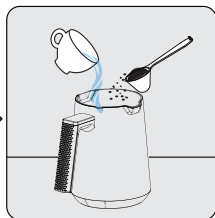


- If you see aggregation or dry coffee over the coffee you cook, it is advised that you mix the prepared mixture with a plastic or wooden spoon (do not use a metal spoon) before starting to brewing.
- While preparing the coffee, pay attention that the base of the brewing pot is not wet.
- After every brewing, clean the brewing detection sensor and heat detection sensor by wiping them.
- After brewing with milk, always clean the pot base.

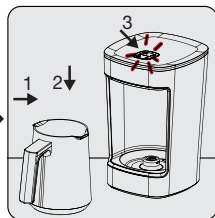
3 Operation



Plug in the appliance.
- Start button will illuminate in white colour.



Pour the ingredients (coffee, sugar, water or milk) into the brewing pot according to the amounts table and the type of brewing.
- Mix it until no coffee remains on it.



Place the brewing pot into its slot. Depending on your choice of brewing type, press the Classic button for Classic Turkish coffee, Roasted button for Roasted Turkish coffee, Milk drink button for Milk drinks (Turkish coffee with milk, Hot chocolate etc.), and Milk Heating button for heating milk. Press and hold the Milk Heating button for 3 seconds for the lukewarm milk function.

- The appliance gives starting warning (beep) and the status light (1) is illuminated in red colour.

3 Operation

WARNING:

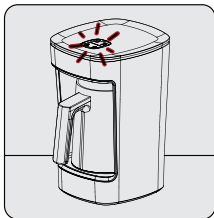


- Pay attention that you do not exceed the maximum level line (5) within the brewing pot (4) while adding coffee and mixtures including milk.
- Do not put anything other than spoon (9) or wooden spoon, which have been provided with the product, into the brewing pot (4).
- Never operate the brewing pot without putting water into the brewing pot.
- Your appliance will not work if the brewing pot (4) is not fully inserted.



- For a delicious coffee, remove the brewing pot (4) from the slot (2) without waiting!
- Pour the coffee into the cup quickly so that the foam and grounds do not remain in the brewing pot (4).
- Press and hold coffee brewing start button (1) for 3 seconds in order to cancel the brewing process due to any reason.

3 Operation



Once the brewing process is complete, the appliance will give an audible warning and the status light (1) will turn on in red.



After the brewing process is finished, serve your coffee in a cup.

3.3 Amounts

This is a practical appliance designed for brewing Turkish coffee, Turkish coffee with milk, as well as heating milk. You can make foamy Turkish coffee to suit your taste using the measurements specified in the table. The following measurements serve only as a guide. You can adjust these measurements according to your personal preferences.

- You can have a maximum of 5 portions (320 ml.) for Turkish coffee and roasted coffee, and a maximum of 3 portions (200 ml.) for Milk Drinks, Milk heating and Lukewarm milk functions.
- The specified amounts correspond to a middle size cup for one-person. You can use the measuring spoon, which has been provided with the product, as coffee measuring spoon. In order to brew a foamy, delicious coffee, use a finely drawn, fresh coffee suitable for Turkish coffee.

3 Operation

Recommended amounts for making Turkish coffee

	Plain	Little sugar	Medium	Sweet
Coffee	1 scoop	1 scoop	1 scoop	1 scoop
Sugar	-	1/2 cube sugar/ 1/2 teaspoon of granulated sugar	1 cube sugar/ 1 teaspoon of granulated sugar	2 cube sugar/ 2 teaspoon of granulated sugar

* It is recommended to use sugar cubes for easier adjustment of the sugar ratio.



- Do not use the product to heat up untreated (fresh) milk.
- You must boil untreated (fresh) milk to kill off all the harmful bacteria inside. Using untreated (fresh) milk without boiling it first is unhygienic.
- Make sure that the milk used is fresh.

3 Operation

Recommended amounts for making Turkish coffee with milk				
	Plain	Little sugar	Medium	Sweet
Coffee	1/2 scoop (half measuring spoon)			
Milk	1/2 milk and 1/2 water (half cup of water/half cup of milk)			
Sugar	-	1/2 cube sugar or 1/2 teaspoon of granulated sugar	1 cube sugar or 1 teaspoon of granulated sugar	2 cube sugars or 2 teaspoons of granulated sugar
The amounts given are for a single-person coffee with milk. For coffee with milk, maximum capacity is 3 cups (200 ml.)				
For brewing 1 cup of Turkish coffee with milk; you should use half cup of water, half cup of milk and half scoop of Turkish coffee.				
When the process of brewing coffee with milk is completed, it is recommended to serve the coffee by slightly shaking the brewing pot. This way, your coffee with milk will mix homogeneously.				

Recommended Amounts for Milk Drinks		
	Amount	
Milk	100 ml.	200 ml.
Hot chocolate	~ 10 gr. (half measurement spoon)	~ 20 gr. (1 measuring spoon)
2-in-1 or 3-in-1 Ready-made coffee	~ 7 gr. (half packet)	~ 14 gr. (1 packet)

3 Operation

- Make sure to stir before brewing your coffee.
- You can adjust these amounts according to your personal preferences.
- Prepare your milk drink taking the maximum line inside the coffee pot into consideration

Brewing times

Amount	Classic	Roasted	Coffee with milk	Heating milk
1 Cup	1-1.5 minutes ~	1.5-2.5 minutes ~	1.5-2 minutes ~	1 minute~
2 Cups	1.5-2.5 minutes ~	2.5-3.5 minutes ~	2.5-3 minutes ~	2 minutes ~
3 Cups	2-3.5 minutes ~	3.5-4.5 minutes ~	3-4 minutes ~	2.5 minutes ~
4 Cups	3-4 minutes ~	4.5-6 minutes ~	-	
5 Cups	4-5 minutes ~	6-7 minutes ~		







Brewing times can vary depending on the ambient temperature, temperature of water/milk and mains voltage. When you use the appliance at shorter intervals, the brewing time will be shorter as the heating surface will be hot.

Lukewarm milk function

Those who prefer consuming warm milk can use the lukewarm milk function. You can initiate the heating process by pressing and holding the Milk Heating button for 3 seconds. When the heating process starts, the Milk Drink and Milk Heating buttons illuminate in red.

3 Operation

3.4 Notifications

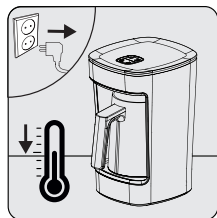
	The product is ready. (All leds steady white light)
	Brewing. (Selected mode steady red light) <ul style="list-style-type: none">• Wait. Do not remove the pot from the slot.
	Brewed. (Selected mode blinking red light) <ul style="list-style-type: none">• Remove the pot from the slot.
	Spillover detection fault. (All leds blinking pink light) <ul style="list-style-type: none">• Remove the brewing pot from its slot. Clean the sensor glass and heat sensor with a damp cloth. Make sure that the level of mixture is not above the maximum line. Make the product ready for brewing by pressing on the start button. You can start a new brewing process by preparing your coffee mixture. Apply the service if the error is repeated.
	Sensor error. (All leds steady pink light and continuous audible warning) <ul style="list-style-type: none">• Turn off and on the device. Apply the service if the error is repeated.
	Timeout error. (All leds blinking red-white light) <ul style="list-style-type: none">• Remove the brewing pot from its slot. Clean the sensor glass and heat sensor with a damp cloth. Make the product ready for brewing by pressing on the start button. You can start a new brewing process by preparing your coffee mixture. Apply the service if the error is repeated.

4 Cleaning and care

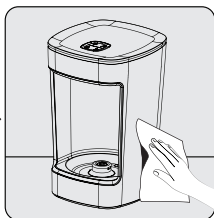
4.1 Cleaning



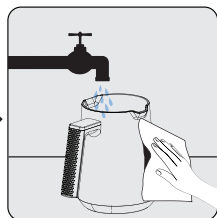
- Do not use benzene, solvents, abrasive cleaners, metal objects or hard brushes to clean the appliance and the brewing pot.
- Do not immerse the appliance, the brewing pot (4) or its power cord (3) in water or in other fluids.
- Wipe the drops of water, which occur on the sensor glass of the appliance after consecutive brewing, with a dry cloth.
- Do not wash the brewing pot (4) in the dishwasher.



Unplug the appliance. Let the appliance cool down.



Use a damp cloth and a small amount of dish soap to clean the outer surface of the brewing pot slot (2).



Clean the inside of the brewing pot (4) by washing it out with water. Never immerse it in the water.

4 Cleaning and care

4.1.2 Descaling

To clean the traces (deposits) that may form on the brewing pot over time without damaging the inner bottom surface of the brewing pot, pour one teaspoon of lemon salt into the brewing pot and pour boiling water over the lemon salt to fill 1/3 of the brewing pot. Let the mixture remain for 10 minutes. After waiting, you can rinse the brewing pot (4) and use it again.



WARNING: If you do not perform the descaling operation for a long period of time, the base of the water reservoir of the appliance shall be completely covered with lime and become unusable.

4.1.3 Pot Cleaning

- It is recommended to clean the pot right after cooking your coffee.
- If the pot is left uncleaned after cooking, add hot water and let it sit for a while to help dissolve any coffee or milk residues.
- Gently wipe the inner surface of the pot with a soft sponge or microfiber cloth.
- Do not use metal or hard materials, as they may damage the surface of the pot.

4.2 Storage

- Store the appliance carefully if you do not intend to use it for a long time.
- Make sure the appliance is unplugged, cooled down and completely dry.
- Store the appliance in a cool and dry place.
- Keep the appliance and the cable out of the reach of children.

4 Cleaning and care

4.3 Transportation and handling

- Transport the appliance in its original packaging during handling and transport. The packaging protects the appliance from physical damage.
- Do not place heavy objects on the appliance or its packaging. The appliance may get damaged.
- If the appliance is dropped, it may stop working or permanent damage may occur.

4.4 Important points for energy saving

Turn off and unplug the appliance after each use.

4.5 Sleep Mode

If you do not use the appliance for 3 minutes, it will automatically go into (Stand-by) mode with a beep sound. A warning sound is heard when the start button is pressed. The status light is illuminated in white colour and the appliance becomes ready for use.

Additional Information for User Manual:

Technical information on the operating Low Power Modes pursuant to EU Regulation 2023/826		
Mode	Power Consumption(Watt)	Period(Minutes)*
Off	-	-
Standby	0.5	3
Standby Mode with information or status display	-	-
Networked Standby	-	-

*The period after which the equipment reaches automatically standby mode, off mode or networked standby in minutes and rounded to the nearest minute.

ORIGINAL MANUFACTURER'S WARRANTY ADVICE FORM

BEKO SMALL KITCHEN APPLIANCES (including Coffee Machines, Slushie Maker & Air Fryer)

24 months warranty, full parts and labour warranty only.

WARRANTY CONDITIONS

The following conditions apply only in relations to the warranty expressly given on this Warranty Advice Form supplied with the product. This warranty only applies to appliances purchased and used in Australia or New Zealand and is in addition to (and does not exclude, restrict or modify in any way) other rights and remedies under a law to which the appliances relate, including any non-excludable statutory guarantees in Australia and New Zealand. It applies to the original purchaser and for appliances used in domestic applications only.

- This warranty does not apply:
 - if the identification number attached to the appliance has been altered, rendered illegible or removed;
 - to light globes;
 - to paint and vitreous enamel finishes and glass;
 - to surfaces damaged by use of aerosols or cleaners;
 - if the appliance has been –
 - subject to misuse, abuse, negligence, accident, fire or floods;
 - connected or improper, inadequate or faulty electricity, gas, water or drainage services or intake or exhaust ducts or flues, or operated using incorrect or contaminated fuels or lubricants;
 - installed, maintained or operated otherwise than in accordance with the instructions furnished by Beko including the improper use of detergents, bleaches, cleaners or other additives;
 - damaged by foreign objects in the appliance;
 - serviced, repaired or altered otherwise than by Beko authorised service agents of Beko, or using other than Beko approved replacement parts.
- The purchaser shall be responsible for any expenses involved in making the appliances readily accessible for servicing, the purchaser shall be responsible for any costs of transporting the appliance or parts thereof to and from the nearest Beko authorised service agent.
- This warranty is the only expressed warranty given by Beko.
- Beko reserves the right to determine whether or not the fault is caused by faulty workmanship or material or that any part is defective.
- Where permitted by law, this warranty shall not apply to loss suffered through or resulting from the non-operation or the ineffective operation of the appliance or any part of the appliance.
- The purchaser must produce proof of the date of purchase together with this Warranty Advice Form when making a claim.
- Subject to your statutory rights as to the merchantable quality of the product or accessory. In the event of a product or accessory being replaced during the guarantee, the guarantee on the replacement will expire at the original date, i.e., 24 months from the original purchase date.
- Australia: For Appliances and services provided by Beko in Australia, Beko goods come with a guarantee by Beko that cannot be excluded under the Australian Consumer Law. You are entitled to a replacement or refund for a major failure and for compensation for any other reasonably foreseeable loss or damage. You are also entitled to have the Appliance repaired or replaced if the Appliance fails to be of acceptable quality and the failure does not amount to a major failure. 'Acceptable quality' and 'major failure' have the same meaning as referred to in the Australian Consumer Law.
- New Zealand: For Appliances and services provided by Beko in New Zealand, the Appliances come with a guarantee by Beko pursuant to the provisions of the Consumer Guarantees Act, the Sales of Goods Act and the Fair Trading Act. Where the Appliance was purchased in New Zealand for commercial purposes the Consumer Guarantee Act does not apply.

These Warranty Conditions supersedes and excludes all other representations, conditions and warranties, except those implied by legislation previously referred to.

For Service or Spare Parts: Aust 1300 282 356 NZ 0800 692 356

Beko A&NZ Pty Ltd
55 Blanck Street, Ormeau QLD,
4208 AUSTRALIA

www.beko.com.au