

# Vacuum Blender

## User Manual



TBV8106BX

**EN**

01M-8816463200-1919-01

**beko**

## Please read this manual first!

Dear Valued Customer,

Thank you for selecting this Beko appliance. We hope that you get the best results from your appliance which has been manufactured with high quality and state-of-the-art technology. For this reason, please read this user manual and all other provided documents carefully before using the appliance and keep it as a reference for future use. If you hand over the appliance to someone else, give the user manual as well. Follow the instructions by paying attention to all the information and warnings in the user manual.

### Meanings of the symbols

Following symbols are used in various sections of this manual:



Important information and useful hints about usage.



**WARNING:** Warnings for dangerous situations concerning the safety of life and property.



Suitable for contact with food.



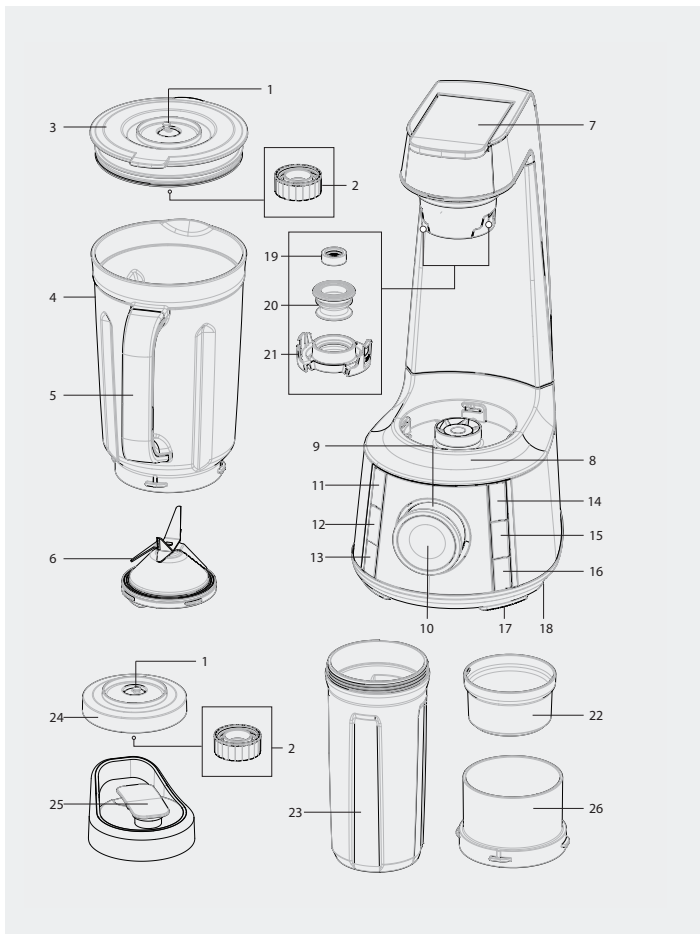
Do not immerse the appliance, the power cable, or the power plug in water or any other liquid.



This product has been produced in environmentally-friendly, state-of-the-art facilities.

Conforms to the WEEE Directive.





The values which are declared in the markings affixed on your product or the other printed documents supplied with it represent the values which were obtained in the laboratories pursuant to the pertinent standards. These values may vary according to the usage of the appliance and ambient conditions.

1. Vacuum valve
2. Backflow prevention cap
3. Lid
4. Tritan Jug
5. Jug handle
6. Blade unit
7. Lever
8. Motor housing
9. On-Off / Speed adjustment knob
10. Pulse button
11. Smoothie button
12. Ice button
13. Sauce button
14. Vacuum button
15. Vacuum+Blend button
16. Auto-Clean button
17. Non-slip feet
18. Cable storage compartment
19. Filter
20. Vacuum seal
21. Suction head cover
22. Measuring cup / Anti-insect cap
23. Portable bottle
24. Vacuum lid
25. Portable bottle Lid
26. Bottle stand

## Technical data

**Voltage:** 220-240V ~ 50-60 Hz

**Power consumption:** 1000 W

Rights to make technical and design changes are reserved.

## CONTENTS

---

**ENGLISH**

**06-26**

---

# 1 Important safety and environmental instructions

This section contains safety instructions that will help protect from risk of personal injury or material damage.

Failure to follow these instructions voids any grant-ed warranty.

## 1.1 General safety

- Read all instructions.
- This appliance may be used by people whose physical, perceptive or mental skills are impaired or who are inexperienced or not knowledgeable about the appliance as long as they are supervised or informed and made aware of the safe use of the appliance and the encountered dangers. Children should not play with the appliance.
- Do not operate any appliance with a damaged cord or plug or after the appliance malfunctions, or is dropped or damaged in any manner.

# 1 Important safety and environmental instructions

Contact the manufacturer at their customer service telephone number for information on examination, repair, or adjustment.

- The use of attachments, including canning jars, not recommended by the manufacturer may cause a risk of injury to persons.
- Do not attempt to dismantle the appliance.
- Do not operate or place any part of this appliance or its parts on or near hot surfaces.
- Do not use the device for hot food.
- Your mains power supply should comply with the information supplied on the rating plate of the appliance.
- Do not use the appliance with an extension cable.
- Do not touch the plug of the appliance with damp or wet hands.

# 1 Important safety and environmental instructions

- Unplug from outlet when not in use, before putting on or taking off parts, and before cleaning.
- Hold the blending shaft of the appliance carefully during transportation and cleaning.
- Never touch blades while using the appliance. There is the possibility of injury due to incorrect usage.
- Avoid contacting moving parts.
- Do not use outdoors.
- Do not let cord hang over edge of table or counter.
- Keep hands and utensils out of jug while blending to reduce the risk of severe injury to persons or damage to the blender. A scraper may be used but must be used only when the blender is not running.
- **CAUTION:** Extra care is needed when handling the sharp cutting blades, emptying the bowl or and during cleaning.



# 1 Important safety and environmental instructions

- Always operate blender with cover in place.
- Do not blend hot liquids.
- To reduce the risk of electric shock, the plug should only be connected to a proper outlet. If the plug does not fit fully in the outlet, contact a qualified electrician. Do not modify the plug in any way.
- After cleaning, dry the appliance and all parts before connecting it to mains supply and before attaching the parts.
- Do not immerse the appliance, the power cable, or the power plug in water or any other liquid.
- If you keep the packaging materials, store them out of the reach of children.
- Children shall not use the appliance. Keep the appliance out of the reach of children.
- Always disconnect the blender from the supply if it is left unattended and before assembling, disassembling.

# 1 Important safety and environmental instructions

- Switch off the appliance and disconnect from supply before changing accessories or approaching parts that move in use.
- CAUTION: In order to avoid a hazard due to inadvertent resetting of the thermal cut-out, this appliance must not be supplied through an external switching device, such as a timer, or connected to a circuit that is regularly switched on and off by the utility.
- SAVE THESE INSTRUCTIONS

# 1 Important safety and environmental instructions

## 1.2 Compliance with the WEEE Directive and Disposing of the Waste Product:

This product complies with EU WEEE Directive (2012/19/EU). This product bears a classification symbol for waste electrical and electronic equipment (WEEE).



This symbol indicates that this product shall not be disposed with other household wastes at the end of its service life. Used device must be returned to official collection point for recycling of electrical and electronic devices. To find these collection systems please contact to your local authorities or retailer where the product was purchased. Each household performs important role in recovering and recycling of old appliance. Appropriate disposal of used appliance helps prevent potential negative consequences for the environment and human health.

## 1.3 Compliance with RoHS Directive

The product you have purchased complies with EU RoHS Directive (2011/65/EU). It does not contain harmful and prohibited materials specified in the Directive.

## 1.4 Package information



Packaging materials of the product are manufactured from recyclable materials in accordance with our National Environment Regulations. Do not dispose of the packaging materials together with the domestic or other wastes. Take them to the packaging material collection points designated by the local authorities.

## 2 Operation

### 2.1 Intended Use

This appliance is intended to be used in household and similar applications such as:

- Staff kitchen areas in shops, offices and other working environments;
- Farm houses;
- By clients in hotels, motels and other residential type environments;
- Bed and Breakfast type environments

It is not suitable for professional use.

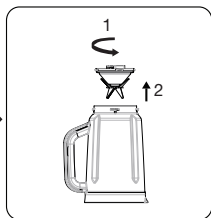
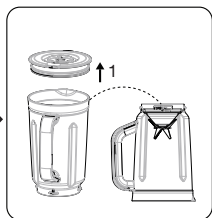
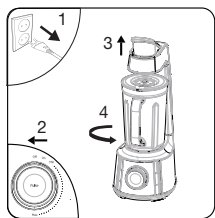
### 2.2 Initial Use

Clean the parts of the appliance prior to initial use (see 3.1).

### 2.3 Removing the Chopping Blade



**WARNING:** Do not touch the blades with your bare hands.



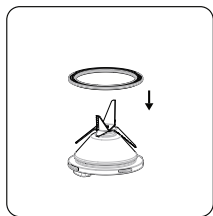
Unplug the appliance and move the speed adjustment knob (9) to "OFF" position. Pull up the lever (7) and unlock the jug (4) anti-clockwise according the "Open" arrow on the motor unit (8).

Open the vacuum valve by rotating it and remove the vacuum from (4) the valve. Remove the lid from the jug and turn the jug over (3, 4).

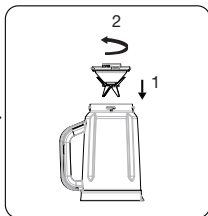
Remove chopping blade unit (6) by turning clockwise.

## 2 Operation

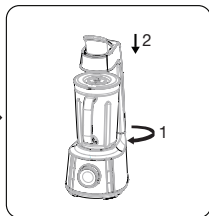
### 2.4 Installing the Chopping Blade



Put the silicone ring in its place on the chopping blade (6) and place the chopping blade under the jug (4).



Place it back in the jug (4) by turning anti-clockwise.



Place the jug onto the motor housing (8).

### 2.5 Operation

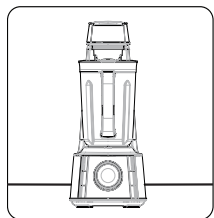


**WARNING:** Do not operate the appliance when empty.

**i**

- The maximum temperature of the liquid to be prepared inside the appliance must not exceed 40 C degrees.
- Put soft foods or liquids before adding hard foods or ice.
- Adding some water into the appliance will allow it run smoothly (e.g. 40ml water for 60gr solid food). Add the water before the ingredients.

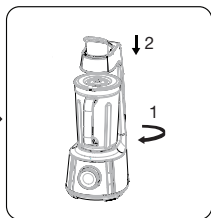
## 2 Operation



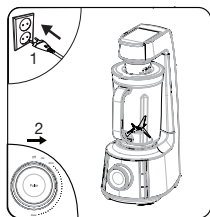
Place your appliance on a solid and flat surface.



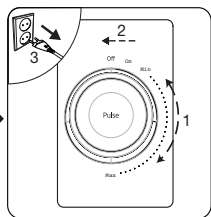
Put the ingredient you want to process into the jug (4) and place the lid (3) on it.



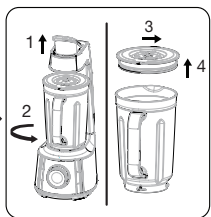
Place the jug onto the motor housing (8) so that the tab on it seats on the slots of the motor housing (8), turn it to the "Lock" position and secure.



Plug in the appliance and move the speed adjustment knob (9) to "ON" position.



Process the ingredients at the desired speed using the speed adjustment knob (9). When the process is complete, move the speed adjustment knob (9) to "OFF" position and unplug the appliance.



Remove the jug from the motor unit by rotating it counterclockwise (4, 8). Open the lid (3) and take out the food.

## 2 Operation

### **WARNING:**



- Gradually increase the speed of the appliance. Do not operate it at the highest speed suddenly. Otherwise the motor may overheat.
- Do not run the appliance continuously for more than 2 minutes. Let it cool for 5 minute before operating it again.
- Do not insert any foreign objects into the jug (4) when the appliance is in use.
- Do not remove ingredients from the jug (4) before chopping blade (6) has completely stopped.
- Do not use carbonated beverage, crop, frozen food, or sticky food (boiled bean, yam, etc.).

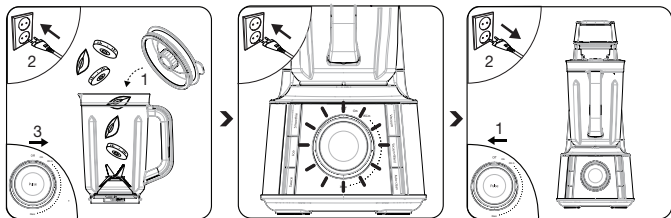


After each use, the jug lid (3, 22) must be washed and remove moisture for next use. Dry it well before use.

## 2 Operation

### 2.6 Automatic programs with the jug

The appliance is equipped with six automatic programs that you can use: Smoothie (11), Ice (12), Sauce (13), Vacuum (14), Vacuum+Blend (15), and Auto Clean (16).



Put the ingredients in the jug (4) and close the lid (3). Plug in the appliance and move the speed adjustment knob (9) to "ON" position.

Select the desired automatic program. The program that you have chosen will turn on and start functioning at various speed settings. If you choose the vacuum program, it will start vacuuming and will stop after 1 minute. If you choose Vacuum+Mixing program, the program will keep on functioning at various speeds after the vacuum has stopped and the program will stop 2 minutes afterwards. The light will flash.

When the process is complete, move the speed adjustment knob (9) to "OFF" position and unplug the appliance.



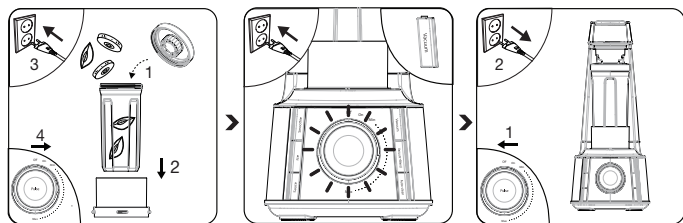
## 2 Operation

### 2.7 "Pulse" position

For mixing with high speed short pulses, turn speed adjustment knob (9) to "ON" position and press "pulse" (10). The appliance will stop when you release the button.

### 2.8 Vacuum program with the bottle

You can use Vacuum program with the storage bottle by assembled it and the bottle stand accessory onto the appliance.



Put the ingredients in the portable bottle (23) and close the vacuum lid (24). Place it into the bottle stand (26) and lock it by turning clockwise on the motor unit (8). Plug in the appliance and move the speed adjustment knob (9) to "ON" position.

Select the Vacuum program. The pump will turn on and stop until the sensor is automatic off or about 1 minute later. The light will blink.

When the process is complete, move the speed adjustment knob (9) to "OFF" position and unplug the appliance.

You can keep blended juice or other foods in vacuum using the storage bottle to keep them fresh for a long time.

## 2 Operation



- Vacuum delays oxidation but does not sterilize the contents. Keep them refrigerated and have them as soon as possible
- If you want to stop the appliance at any time during the operation, move the speed adjustment knob (9) to "OFF" position.

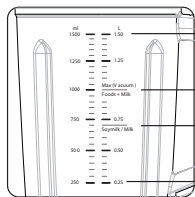


### WARNING:

- When you store food in the smoothie bottle by means of vacuum storage, store such in a refrigerator. Do not store this in a freezer.
- When you store food in the smoothie bottle by means of vacuum storage, store such in a refrigerator. Do not store this in a freezer.
- Do not use any jug or part other than those meant for the purpose intended.

## 2.9 Maximum quantities

Maintain the maximum or the minimum volume for each type of material by the scale on the jug (4).



- Maximum level for materials to blend (1,500ml)
- Maximum level for materials including milk products such as milk and soymilk to vacuum (1,000ml)
- Maximum level for milk products such as milk and soymilk to vacuum (700ml)
- Minimum level for materials to blend (250ml)

## 2 Operation

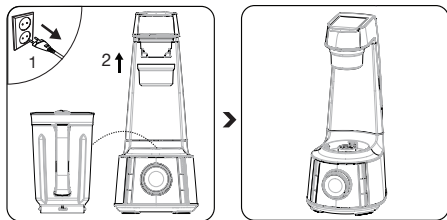


### WARNING:

- Do not exceed the maximum level for each food material indicated by the scale on the jug (4). Air bubbles or food materials getting into the pump can cause trouble.
- If there are ingredients stuck between the chopping blades (6), please dismount it from the jug (4) and remove the stuck matter using a long slender utensil, etc.

### 2.10 Anti-insect prevention for vacuum passage

The measuring cup (22) accessory can be used as an anti-insect cap to prevent insects or bacteria breeding in the vacuum passage.



Take out the jug (4) from the motor housing (8) and pull down the lever (7). Place and secure the measuring cup (22) onto the vacuum suction head (21).

If you want to operate the appliance again, remove the measuring cup (22) from the vacuum suction head (21) first before intend to pull up the lever (7).

## 2 Operation



**WARNING:** Take cautions to make sure the food material does not go into the safety device. Never directly push the safety switch pin with your finger or a rod, etc.

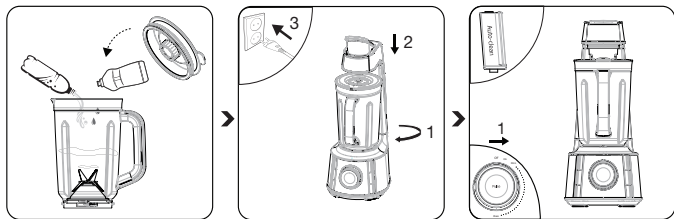
### 2.11 Motor Protection

Automatic motor protection will get activated and stop the appliance when the appliance overheats. In this case;

- 1 Move the speed adjustment knob (9) to "OFF" position.
2. Unplug the appliance.
3. Let it cool for 15-20 minutes.

## 3 Cleaning and care

### 3.1 Cleaning

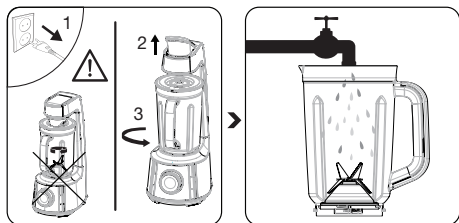


Add 1 or 1 ½ cups of luke warm water and some drops of dish-washing liquid into the jug (4) and close the lid (3).

Place the jug (4) into the motor unit (8). Lock the jug (4) clockwise according to the "Lock" arrow on the motor unit (8) and press down the lever (7). Plug in the appliance.

Use Auto Clean program to operate it for 26 seconds.

### 3 Cleaning and care



Unplug the appliance before cleaning. Wait for the accessories used to stop completely. Pull up the lever (7) and unlock the jug (4) anticlockwise according to the "Open" arrow on the motor unit (8). Pull up the jug (4) to remove it from the motor unit (8). Then rinse it.



- You can wash the jug, portable bottle (4, 23) and the caps/lids, portable bottle lid (3, 22, 24, 25) in your dish-washer. It is recommended to clean the appliance immediately after using.



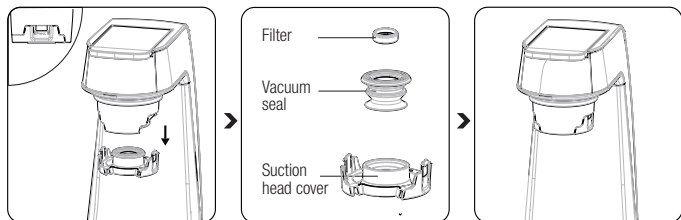
#### **WARNING:**

- Do not immerse the motor unit (8) in water. You can wipe it with a damp cloth.
- Chopping blade (6) is sharp. Do not hold the sharp edge or immerse in water while cleaning.

## 3 Cleaning and care

### 3.2 Washing or replacing the filter

The vacuum suction head (21) on the appliance is assembled with a washable permanent filter to avoid trouble in case the jug lid (3) is spattered with food, as this can block the vacuum passage and cause trouble.

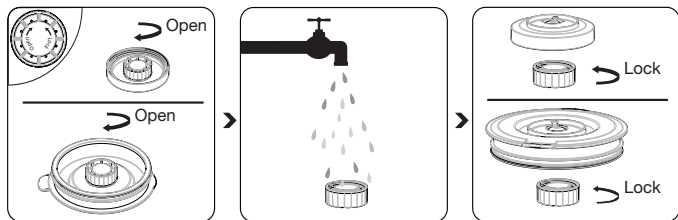


Press the latches of suction head cover (21) at both sides to remove it downward.

Take out the filter (19) from the vacuum seal (20) to wash or rinse it, or replace a new one.

Place and secure the suction head cover (21) back before use.

The jug lid (3) is also assembled with a washable permanent filter.



Turn over the lid (3) and open the backflow prevention cap by turning it anti-clockwise to remove it from the lid (3).

Take out the backflow prevention cap to wash or rinse then to dry it. Make sure there is no water or foods blocked venting holes.

Place and secure the backflow prevention cap back by turning it clockwise before use.

## 3 Cleaning and care

### 3.3 Storage

- If you do not intend to use the appliance for a long time, store it carefully.
- Unplug the appliance and wait for it to cool completely before storing it.
- Keep the appliance and its accessories in their original packages.
- Do not wrap the power cord around the appliance.
- Store it in a cool, dry place.
- Always keep the appliance out of the reach of children.

### 3.4 Handling and transportation

- During handling and transportation, carry the appliance in its original packaging. The packaging of the appliance protects it against physical damages.
- Do not place heavy loads on the appliance or on the packaging. The appliance may get damaged.
- Dropping the appliance may render it non-operational or cause permanent damage.





55 Blanck Street, Ormeau Q 4208  
P O Box 354, Ormeau Q 4208  
p : 5549 3146 f : 5549 3546  
ABN : 49 152 055 162

# ORIGINAL MANUFACTURER'S WARRANTY ADVICE FORM

## BEKO SMALL DOMESTIC APPLIANCE

**12 months warranty, full parts and labour warranty only.**

### WARRANTY CONDITIONS

The following conditions apply only in relations to the warranty expressly given on this Warranty Advice Form supplied with the product. This warranty only applies to appliances purchased and used in Australia or New Zealand and is in addition to (and does not exclude, restrict or modify in any way) other rights and remedies under a law to which the appliances relate, including any non-excludable statutory guarantees in Australia and New Zealand. It applies to the original purchaser and for appliances used in domestic applications only.

- This warranty does not apply:
  - if the identification number attached to the appliance has been altered, rendered illegible or removed;
  - to light globes;
  - to paint and vitreous enamel finishes and glass;
  - to surfaces damaged by use of aerosols or cleaners;
  - if the appliance has been –
    - subject to misuse, abuse, negligence, accident, fire or floods;
    - connected or improper, inadequate or faulty electricity, gas, water or drainage services or intake or exhaust ducts or flues, or operated using incorrect or contaminated fuels or lubricants;
    - installed, maintained or operated otherwise than in accordance with the instructions furnished by Beko including the improper use of detergents, bleaches, cleaners or other additives;
    - damaged by foreign objects in the appliance;
    - serviced, repaired or altered otherwise than by Beko authorised service agents of Beko, or using other than Beko approved replacement parts.
- The purchaser shall be responsible for any expenses involved in making the appliances readily accessible for servicing, the purchaser shall be responsible for any costs of transporting the appliance or parts thereof to and from the nearest Beko authorised service agent.
- This warranty is the only expressed warranty given by Beko.
- Beko reserves the right to determine whether or not the fault is caused by faulty workmanship or material or that any part is defective.
- Where permitted by law, this warranty shall not apply to loss suffered through or resulting from the non-operation or the ineffective operation of the appliance or any part of the appliance.
- The purchaser must produce proof of the date of purchase together with this Warranty Advice Form when making a claim.
- Subject to your statutory rights as to the merchantable quality of the product or accessory. In the event of a product or accessory being replaced during the guarantee, the guarantee on the replacement will expire at the original date, i.e., 12 months from the original purchase date.
- Australia: For Appliances and services provided by Beko in Australia, Beko goods come with a guarantee by Beko that cannot be excluded under the Australian Consumer Law. You are entitled to a replacement or refund for a major failure and for compensation for any other reasonably foreseeable loss or damage. You are also entitled to have the Appliance repaired or replaced if the Appliance fails to be of acceptable quality and the failure does not amount to a major failure. 'Acceptable quality' and 'major failure' have the same meaning as referred to in the Australian Consumer Law.
- New Zealand: For Appliances and services provided by Beko in New Zealand, the Appliances come with a guarantee by Beko pursuant to the provisions of the Consumer Guarantees Act, the Sales of Goods Act and the Fair Trading Act. Where the Appliance was purchased in New Zealand for commercial purposes the Consumer Guarantee Act does not apply.

These Warranty Conditions supersedes and excludes all other representations, conditions and warranties, except those implied by legislation previously referred to.

**For Service or Spare Parts: Aust 1300 282 356 NZ 0800 692 356**

