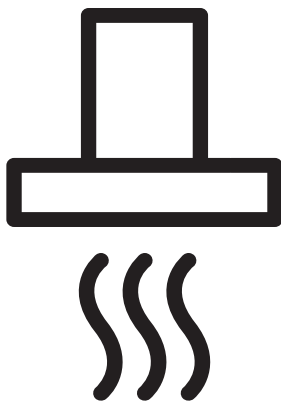




Cooker Hood

User Manual



BRH52UX - BRH70UX - BRH90UX

EN



01M-8860183200-2721-02
01M-8860143200-2721-02
01M-8860153200-2721-02

CONTENTS

1 Important safety and environmental instructions	4
1.1 General Safety	4
1.2 Compliance with the WEEE Directive and Disposing of the Waste Product: .	7
1.3 Compliance with RoHS Directive .	7
1.4 Package Information	7
2 General appearance	8
2.1 Technical data.	8
3 Installation instructions	9
4 Operation	10
5 Use and maintenance	10
5.1 Carbon filter	11
6 Troubleshooting	12

Please read this user manual first!

Dear Valued Customer,

Thank you for preferring this Beko appliance. We hope that you get the best results from your appliance which has been manufactured with high quality and state-of-the-art technology. For this reason, please read this entire user manual and all other accompanying documents carefully before using the appliance and keep it as a reference for future use. If you handover the appliance to someone else, give the user manual as well. Follow the instructions by paying attention to all the information and warnings in the user manual.

Remember that this user manual may also apply to other models. Differences between models are explicitly described in the manual.

Meanings of the Symbols

Following symbols are used in various sections of this user manual:



Important information and useful hints about usage.



WARNING: Warnings against dangerous situations concerning the security of life and property.



WARNING: Warning for danger of fire.



WARNING: Warning for electric shock.



Protection class for electric shock.



This appliance has been produced in environmentally friendly facilities without harming the nature.

1 Important safety and environmental instructions

1.1 General Safety

Important Safety Instructions Read Carefully And Keep For Future Reference This section contains safety instructions that will help protect from risk of fire, electric shock, exposure to leak microwave energy, personal injury or property damage. Failure to follow these instructions shall void any warranty.

- Beko products comply with the applicable safety standards; therefore, in case of any damage on the appliance or power cable, it should be repaired or replaced by the dealer, service center or a specialist and authorized service alike to avoid any danger. Faulty or unqualified repair work may be dangerous and cause risk to the user.
- This appliance is intended to be used in household and similar applications such as:
 - Staff kitchen areas in shops, offices and other working environments;
 - Farm houses
 - By clients in hotels, and other residential type environments;
 - Bed and Breakfast type environments.
- Operate the appliance for its intended purpose only as described in this manual.
- The manufacturer cannot be held liable for damages resulting from improper installation or misuse of the product.
- This appliance can be used by children aged from 8 years and above and persons with reduced physical, sensory or mental capabilities or lack of experience and knowledge if they have been given supervision or instruction concerning use of the appliance in a safe way and understand the hazards involved.
- Children shall not be allowed play with the appliance. Cleaning and user maintenance shall not be made by children without supervision.

1 Important safety and environmental instructions

- The minimum distance between the supporting surface for the cooking vessels on the hob and the lowest part of your product must be at least 65 cm.
- If the instructions for installation for the gas hob specify a greater distance, this has to be taken into account.
- Make sure that your mains power supply complies with the information supplied on the rating plate of the appliance.
- Never use the appliance if the power cable or the appliance itself is damaged.
- Prevent damage to the power cable by not squeezing, bending, or rubbing it on sharp edges. Keep the power cable away from hot surfaces and naked flame.
- Use the appliance with a grounded outlet only.
- Do not touch the lamps if they have operated for a long time. They can burn your hands since they will be hot.
- Follow the regulations set out by competent authorities on discharge of the exhaust air (this warning is not applicable for use without flue).
- Operate your appliance after putting a pot, pan etc. on the hob. Otherwise, high heat may cause deformation in some parts of your product.
- Turn off the hob before taking the pot, pan etc. from it.
- Do not leave hot oil on the hob. Pans with hot oil may cause self combustion.
- Pay attention to your curtains and covers since oil may catch fire while cooking food such as fries.
- Grease filter must be cleaned at least monthly. Carbon filter must be replaced at least every 3 months.

WARNING: Do not connect the appliance to the mains until the installation is fully complete.

- Place the appliance in a way so that the plug is always accessible.

1 Important safety and environmental instructions

- Product shall be cleaned accordance with user manual. If cleaning was not carried out in accordance with user manual, there may be fire risk.
 - Do not use non-fire-resistant filtering materials instead of the current filter.
 - Only use the original parts or parts recommended by the manufacturer.
 - Do not operate the product without the filter and do not remove the filters while the product is running.
 - In the event of be started any flame, de-energize your product and cooking appliances.
 - In the event of be started any flame, cover the flame and never use water to extinguish.
 - Unplug the appliance before each cleaning and when the appliance is not in use.
 - The negative pressure in the environment should not exceed 4 Pa (4x10 bar) while the hood for electric hob and appliances running on another type of energy but electricity operate simultaneously.
 - In the environment where the appliance is being used, the exhaust of devices running on fuel oil or gas, such as room heater must be absolutely isolated or device must be hermetical type.
 - When connecting the flue, use pipes with a diameter of 120 or 150 mm. Pipe connection must be as short as possible and have as few elbows as possible.
 - Danger of choking! Keep all the packaging materials away from children.
- CAUTION:** Accessible parts may become hot when used with cooking appliances.
- The product outlet must not be connected to air channels that include other smoke.

1 Important safety and environmental instructions

- The ventilation in the room may be insufficient when the hood for electric hob is used simultaneously with the devices operating on gas or other fuels (this may not apply to appliances that only discharge the air back into the room).
- Objects placed on the product may fall. Do not place any objects on the product.
- Do not flambe under the your product.

WARNING: Before installing the Hood, remove the protective films.

- Never leave high naked flames under the hood when it is in operation
- Deep fat fryers must be continuously monitored during use: overheated oil can burst into flames.

1.2 Compliance with the WEEE Directive and Disposing of the Waste Product:

This product complies with EU WEEE Directive (2012/19/EU). This product bears a classification symbol for waste electrical and electronic equipment (WEEE).



This symbol indicates that this product shall not be disposed with other household wastes at the end of its service life. Used device must be returned to official collection point for recycling of electrical and electronic devices. To find these collection systems please contact to your local authorities or retailer where the product was purchased. Each household performs important role in recovering and recycling of old appliance. Appropriate disposal of used appliance helps prevent potential negative consequences for the environment and human health.

1.3 Compliance with RoHS Directive

The product you have purchased complies with EU RoHS Directive (2011/65/EU). It does not contain harmful and prohibited materials specified in the Directive.

1.4 Package Information



Packaging materials of the product are manufactured from recyclable materials in accordance with our National Environment Regulations. Do not dispose of the packaging materials together with the domestic or other wastes. Take them to the packaging material collection points designated by the local authorities.

2 General appearance

2.1 Technical data

Model	BRH52UX	BRH70UX	BRH90UX
Supply voltage & Frequency	220 - 240 V, 50 Hz		
Lamp power	2x2 W LED		
Motor power	190 W		270 W
Suction power	600 m ³ /h	650 m ³ /h	820 m ³ /h
Total power	194 W		274 W
Control	3 positions (Push button)		
Net weight	6,4 kg	7,3 kg	9,8 kg
Gross weight	8,1 kg	9,6 kg	12,4 kg
Width	520 mm	695 mm	900 mm
Depth	296 mm		
Height	285 mm		

Markings on the product or the values stated in other documents supplied with the product are values obtained under laboratory conditions as per relevant standards. These values may vary according to the usage of the product and ambient conditions.

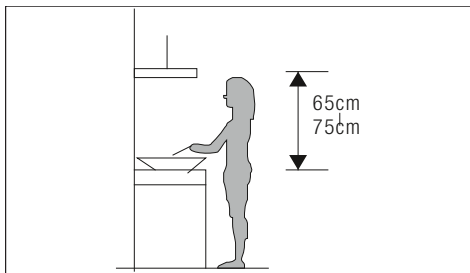
3 Installation instructions

- The exhaust air must not be discharged into a flue which is used for exhausting fumes from other appliances burning gas or other fuels. (Not applicable for appliances which only discharge air back into the room)
- The minimum distance between the supporting surface for the cooking vessels on the hob and the lowest part of the range hood: When the range hood is located above a gas appliance, this distance shall be 65cm. If the instructions for installation for the gas hob specify a greater distance, this must be taken into account. (The distance of 65cm can be reduced for non combustible parts of range hoods and parts operating at safety extra low voltage provided these parts do not give access to live parts. Distance may be reduced to 60cm to align with the AGA code.)
- Regulations concerning the discharge of air have to be fulfilled



WARNING: Failure to install the screws or fixing device in accordance with the instructions may result in electrical hazards

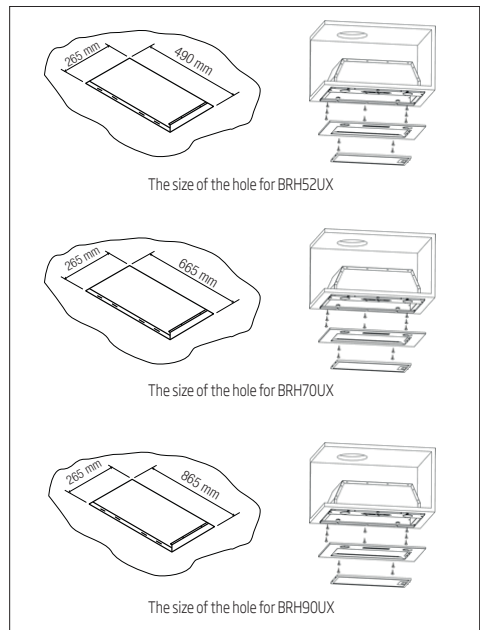
The cooker hoods should be placed at a distance of 65-75cm from the cooking surface for best effect. (See Pic 1)



(Pic 1)

Installation Instruction (See Pic 2)

- Cut a hole in the cupboard according to cut-out size below for your model number. Make sure it's at least 35mm from the edge of the hole to the cupboard edge.
- Take down the filter and remove the four screws on the panel.
- Use random accessory tighten screws fix the hood into cabinet.
- Use 8 screws (ST4x14mm) fix the panel into body and equip the filter.
- Install one-way valve: put the one-way valve into air outlet,
- Put on the one-way valve with air outlet.



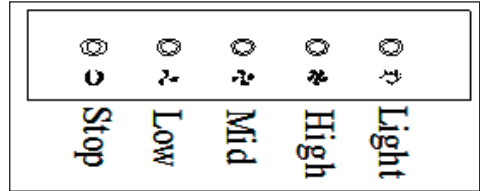
(Pic 2)

4 Operation

Connect the plug into the power.

- Push stop button, and the motor will stop.
- Push the Low button, the motor runs at low speed.
- Push the Mid button, the motor runs at mid speed.
- Push the High button, the motor runs at high speed.

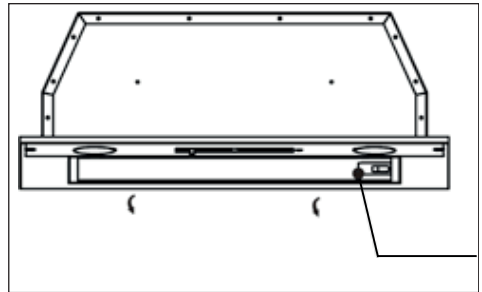
- Push the light button and the two lights will come on. Push it again and the light will turn off.



(Pic 3)

5 Use and maintenance

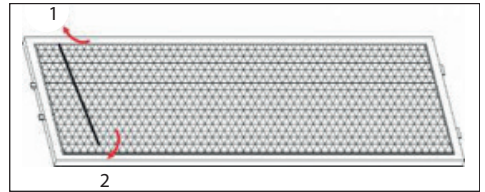
- It is recommended to operate the appliance prior to cooking.
 - There shall be adequate ventilation of the room when the cooker hood is used at the same time as appliances burning gas or other fuels (not applicable to appliances that only discharge the air back into the room).
 - It is recommended to leave the appliance in operation for 15 minutes after cooking is terminated in order to completely eliminate cooking vapours and odours.
 - If the appliance is not used, please turn off.
 - Don't have flame under the cooker hood.
 - Don't use or stop use if the appliance is damaged especially the supply cord and the case.
 - If the supply cord is damaged, it must be replaced by a qualified electrician.
 - Don't immerse the appliance in liquid.
 - The exhaust air must not be discharge into a flue which is used for exhausting fumes from appliance burning gas or other fuels.
 - Regulations concerning the discharge of air have to be fulfilled.
 - The details concerning the method and frequency of cleaning.
- In order to prevent fire hazard, it is recommended to clean the filter every 2 months by carrying out the following:
 - Unplug before cleaning, then remove the filters from the cooker hood and wash them in a solution of water and neutral liquid detergent, leaving to soak.
 - Rinse thoroughly with warm water and leave to dry.
 - The filters may also be washed in the dishwasher.
 - The aluminum panels may alter in colour after several washes. This is not cause for customer complaint nor replacement of panels.



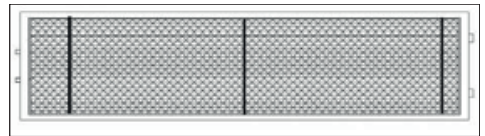
(Pic 4)

5 Use and maintenance

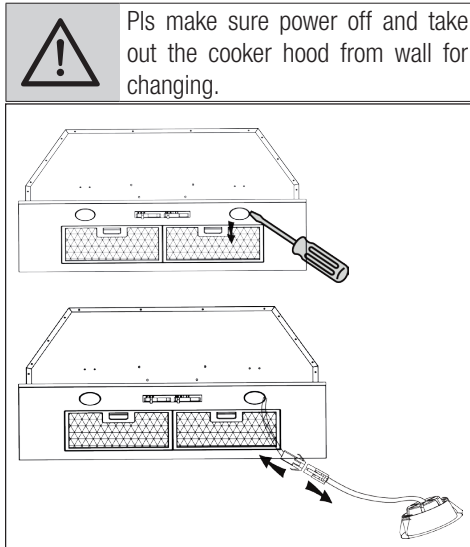
- Clean the surface of the cooker hood regularly using cloth moistened with methylated spirits or non-abrasive liquid detergent. (Note: Do not attempt to clean the motor or any internal component/part.)
 - Replace filters approximately every 4 months.
 - There is a fire risk if cleaning is not carried out in accordance with the instruction.
 - Replace the lamp pls see pic 5. Use screw driver to pull out the light, take out the light wire to change the LED light.
2. Use other three iron wires (3 pcs iron wires for BRH52UX and 4 pcs iron wires for BRH70UX, BRH90UX) in the same method to press the charcoal filter foam flat.



3. The same method is used to install the charcoal filter foam for inner aluminium filter, but it only uses three iron wires.



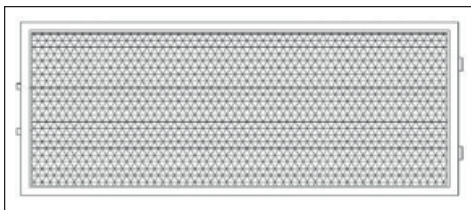
When the activated carbon filter installed, the suction power will be lowered.



(Pic 5)

5.1 Carbon filter

1. Put the charcoal filter foam on the back of the outer aluminium cassette filter.



6

Troubleshooting

Troubleshooting	Reason	Help
The product does not work.	Check your fuse.	Your fuse might be closed, make it work.
The product does not work.	Check the electrical connection.	The mains voltage should be between 220-240 V.
The product does not work.	Check the electrical connection.	Check if the other products in your kitchen are working or not.
The lighting lamp does not work.	Check the electrical connection.	The mains voltage should be between 220-240 V.
The lighting lamp does not work.	Check the lamp switch.	The lamp switch should be in the "on" position.
The lighting lamp does not work.	Check the lamps.	The lamps of the product should not be faulty.
The air intake of the product is poor.	Check the grease filter.	The grease filter should be cleaned at least once a month under normal conditions.
The air intake of the product is poor.	Check the air vent flue.	The air vent flue should be in the "on" position.
The air intake of the product is poor.	Check the carbon filter.	For products with carbon filters, the filter should normally be changed every 3 months.



Manufacturer's Warranty

FOR SALES IN AUSTRALIA AND NEW ZEALAND

This document sets out the terms and conditions of the product warranties for Beko appliances, and it is an important document which you should keep safe together with your proof of purchase for future reference should there be a manufacturing defect in your appliance. This warranty is in addition to other rights you may have under Australian and New Zealand Consumer Laws.

1. In this warranty:

- a. 'Appliance' means the Beko product purchased by you and accompanied by this document;
- b. 'ASC' means Beko authorised service centres;
- c. 'Beko' means Beko Australia and New Zealand Pty Ltd of 55 Blanck Street, Ormeau, QLD 4208, Australia ABN 49 152 055 162 in respect of Appliances purchased in Australia and New Zealand;
- d. 'Warranty Period' means the period specified in clause 3 of this manufacturer's guarantee;
- e. 'you' means the purchaser of the Appliance not having purchased the Appliance for re-sale, and 'your' has a corresponding meaning.

2. Application: This warranty only applies to new Appliances, purchased and used in Australia or New Zealand and is in addition to (and does not exclude, restrict or modify in any way) other rights and remedies under a law to which the Appliances relate, including any non-excludable statutory guarantees in Australia and New Zealand.

3. Warranty Period: Subject to these terms and conditions this warranty continues for a period of 24 months following the date of original purchase of the Appliance. In addition, the Warranty Period is extended an additional 36 months if you register your Appliance on the Beko website shown below within 90 days following the date of original purchase.

4. Repair or Replace Warranty: During the Warranty Period Beko or its ASC will, at no extra charge if your Appliance is readily accessible for service, without special equipment and subject to these terms and conditions, repair or replace any parts which it considers to be defective. Beko or its ASC may use refurbished parts to repair your Appliance. You agree that any replaced Appliances or parts become the property of Beko.

5. Travel and Transportation Costs: Subject to clause 7 Beko will bear the reasonable cost of transportation, travel and delivery of the Appliance to and from Beko or its ASC. Travel and transportation will be arranged by Beko as part of any valid warranty claim.

6. Proof of Purchase: Proof of purchase is required before you can make a claim under this warranty.

7. Exclusions: You may not make a claim under this warranty unless the defect claimed is due to faulty or defective parts or workmanship. This warranty does not cover:

- a. light globes, batteries, filters or similar perishable or consumable parts;

- b. parts and Appliances not supplied by Beko;
- c. cosmetic damage which does not affect the operation of the Appliance;
- d. damage to the Appliance caused by:
 - i. negligence or accident;
 - ii. misuse or abuse, including failure to properly maintain or service;
 - iii. normal wear and tear;
 - iv. power surges, electrical storm damage or incorrect power supply;
 - v. incomplete or improper installation;
 - vi. incorrect, improper or inappropriate operation;
 - vii. insect or vermin infestation;
 - viii. failure to comply with any additional instructions supplied with the Appliance;

In addition, Beko is not liable under this warranty if:

- a. the Appliance has been, or Beko reasonably believes that the Appliance has been, used for purposes other than those for which the Appliance was intended, including where the Appliance has been used for any non-domestic purpose;
 - b. the Appliance is modified without authority from Beko in writing;
 - c. the Appliance's serial number or warranty seal has been removed or defaced;
 - d. the Appliance was serviced or repaired by anyone other than Beko, an authorised repairer or ASC.
- 8. How to Claim Under This Warranty:** To enquire about claiming under this warranty, please follow these steps:
- a. carefully check the operating instructions, user manual and the terms of this warranty;
 - b. have the model and serial number of the Appliance available;
 - c. have the proof of purchase (e.g. an invoice) available;
 - d. contact Beko using the contact details shown below.
- 9. Australia:** For Appliances and services provided by Beko in Australia, Beko goods come with a guarantee by Beko that cannot be excluded under the Australian Consumer Law. You are entitled to a replacement or refund for a major failure and for compensation for any other reasonably foreseeable loss or damage. You are also entitled to have the Appliance repaired or replaced if the Appliance fails to be of acceptable quality and the failure does not amount to a major failure. 'Acceptable quality' and 'major failure' have the same meaning as referred to in the Australian Consumer Law.
- 10. New Zealand:** For Appliances and services provided by Beko in New Zealand, the Appliances come with a guarantee by Beko pursuant to the provisions of the Consumer Guarantees Act, the Sales of Goods Act and the Fair Trading Act. Where the Appliance was purchased in New Zealand for commercial purposes the Consumer Guarantee Act does not apply.
- 11. Confidentiality:** You accept that if you make a warranty claim, Beko and its ASC may exchange information in relation to you to enable Beko to meet its obligations under this warranty.

Australia Service Contact Details:

www.beko.com.au/customer-care

Toll Free 1300AUBEKO 1300 282 356

Email: Beko.care@Beko.com *

Fax: (07) 5549 3546

New Zealand Service Contact Details:

www.beko.co.nz/customer-care

Toll Free 0800NZBEKO 0800 69 2356

Email: Beko.care@Beko.com *

Fax: (+617) 5549 3546

Arçelik A.Ş.
Karaağaç Caddesi No: 2-6, 34445,
Sütlüce, İstanbul, Türkiye

www.beko.com