



# **Manual Espresso Machine with Integrated Milk Frother**

User Manual



CEP 5302 B

EN



01M-8919243200-1125-01

You can download the  
HomeDirect application  
for free from the Apple App Store  
or Google Play Store to access  
the recipes.



## CONTENTS

---

**ENGLISH**

---

**3-17**

## Please read this user manual first!

Dear Customer,

Thank you for selecting this Beko product. We hope that you get the best results from your product, which has been manufactured to a high quality with state-of-the-art technology. Please read this entire user manual and all other accompanying documents carefully before using the product and keep them as a reference for future use. If you pass on the product to someone else, please give them the user manual as well. Please take into consideration all warnings and information in the user manual.

## Explanation of symbols

The following symbols are used in the various section of this manual:



Important information or useful hints about usage.



**DANGER:** This warning for dangerous situations with regard to life and property.



**WARNING:** This warning indicates potentially dangerous situations.



**CAUTION:** This warning indicates the potential for material damage.



Materials are suitable for food contact

# 1 Important instructions for safety and environment

This section includes the safety instructions that will help providing protection against personal injury and material loss risks. Failure to follow these instructions invalidates the granted warranty.

## 1.1 Danger of electric current

Danger to life by electric current!

Contact with live wires or components could lead to serious injury or even death!

Observe the following safety precautions to avoid electric shocks:

- Do not use the coffee machine if the connecting cable or mains plug are damaged.
- Before reusing the coffee machine, the mains cable must be renewed by a qualified electrician.
- Do not open the housing of the coffee machine. Danger of electric shock if live connections are touched and/or the electrical and mechanical configuration is changed.

## 1.2 Danger of burning or scalding

Parts of the coffee machine can become very hot during operation! Dispensed drinks and escaping steam are very hot!

Observe the following safety precautions to avoid burning/scalding yourself and/or others:

- Do not touch either of the metal sleeves on both coffee spouts.
- Avoid direct contact of the skin with escaping steam or hot rinsing, cleaning and descaling water.

## 1.3 Fundamental safety precautions

Observe the following safety precautions to ensure safe handling of the coffee machine:

- Never play with packaging material. Risk of suffocation.
- Inspect the coffee machine for visible signs of damage before use. Do not use a damaged coffee machine.
- If the supply cord is damaged, it must be replaced by the manufacturer or its agent or similarly qualified person in order to avoid hazard.

- Repairs to the coffee machine must only be carried out by an authorised specialist or by the works customer service. Unqualified repairs can lead to considerable danger for the user. They will also void the warranty.
- Repairs to the coffee machine during the warranty period may only be carried out by service centres authorised by the manufacturer, otherwise the warranty will become void in the event of subsequent damage.
- Defective parts may only be replaced with original spare parts. Only original spare parts guarantee that the safety requirements are met.
- Appliances can be used by persons with reduced physical, sensory or mental capabilities or lack of experience and knowledge if they have been given supervision or instruction concerning use of the appliance in a safe way and understand the hazards involved.
- This appliance can be used by children aged from 8 years and above if they have been given supervision or instruction concerning use of the appliance in a safe way and if they understand the hazards involved. Cleaning and user maintenance shall not be made by children unless they are older than 8 and supervised. Keep the appliance and its cord out of reach of children aged less than 8 years.
- Children shall not play with the appliance.
- This appliance is intended to be used in household and similar applications such as:
  - staff kitchen areas in shops, offices and other working environments;
  - farm houses;
  - by clients in hotels, motels and other residential environments;
  - bed and breakfast type environments.
- Protect the coffee machine against the effects of weather such as rain, frost and direct sunlight. Do not use the coffee machine outdoors.
- The appliance must not be immersed.
- Do not clean the coffee machine or accessories in a dish washer.
- Do not pour any other liquids apart from water or place foodstuffs into the water tank.
- Do not fill the water tank beyond the maximum mark (lower edge of the filling hole) (1.1 litres).

# 1 Important instructions for safety and environment

- Only operate the machine when the waste container, drip tray and the cup grate are fitted.
- Do not pull the cable to remove the plug from the mains socket or touch with wet hands.
- Do not hold the coffee machine with the mains cable.
- Keep the appliance and its cord out of reach of children aged less than 8 years.
- Before removing the water tank to fill or empty it, always turn the machine off.
- Always place the unit on a flat, stable, heat-resistant work surface.
- Before brewing, the portafilter must be turned to the right as tight as possible to prevent the portafilter from loosening due to high pressure.
- Serious injury may result from misuse. To protect against a fire, electric shock or personal injury, do not immerse cord, electric plugs, heating base in water or other liquids. Do not operate any appliance with a damaged cord or plug, after the appliance malfunctions, or is dropped or damaged in any manner. Please contact the manufacturer or his customer service.
- Heating element surface is subject to residual heat after use, do not touch the hot surface, use the handle or the button. Always keep hands out of container and machine while in use and afterward to reduce the risk of injury to persons.
- Coffee-maker shall not be placed in a cabinet when in use.
- Cleaning: Do not place the appliance in water or other liquids. Clean the housing only with a sponge/cloth moistened in warm, soapy water. Do not use harsh, abrasive cleaners. See chapter 6 for detailed cleaning instructions.

## 1.4 Intended use

The manual espresso machine Beko is intended for use in homes and similar applications, for instance in staff kitchens, shops, offices and similar areas or by customers in bed & breakfast, hotels, motels and other living accommodation. This coffee machine is not intended for commercial use. The machine is only intended for preparing coffee and heating milk and water. Any other use other than previously stated is considered as improper use.

### Danger resulting from improper use!

If not used for its intended purpose or used in any other way, the coffee machine may be or become a source of danger.



- Therefore, the coffee machine may only be used for its intended purpose.
- Observe the procedures described in this user manual.

No claims of any kind will be accepted for damage or injury resulting from use of the coffee machine for other than its intended purpose.

The risk has to be borne solely by the machine owner.

## 1.5 Limitation of liability

All technical information, data and instructions on installation, operation and maintenance of the coffee machine contained in these operating instructions represent the current status at the time of printing and are based on the best possible knowledge gained by experience and knowhow.

No claims can be derived from the information, illustrations and descriptions in this user manual.

The manufacturer assumes no liability for damage or injury resulting from failure to observe the user manual, use for other than the intended purpose, unprofessional repairs, unauthorised modifications or use of non-approved spare parts.

# 1 Important instructions for safety and environment

## 1.6 Compliance with the WEEE Directive and Disposing of the Waste Product:

This product complies with EU WEEE Directive (2012/19/EU). This product bears a classification symbol for waste electrical and electronic equipment (WEEE).



This symbol indicates that this product shall not be disposed with other household waste at the end of its service life. The used device must be returned to an official collection point for the recycling of electrical and electronic devices. To find these collection points, please contact your local authority or retailer where the product was purchased. Each household performs an important role in the restoring and recycling of old appliances. The appropriate disposal of used appliance helps prevent potential negative consequences for the environment and human health.

## 1.7 Compliance with RoHS Directive

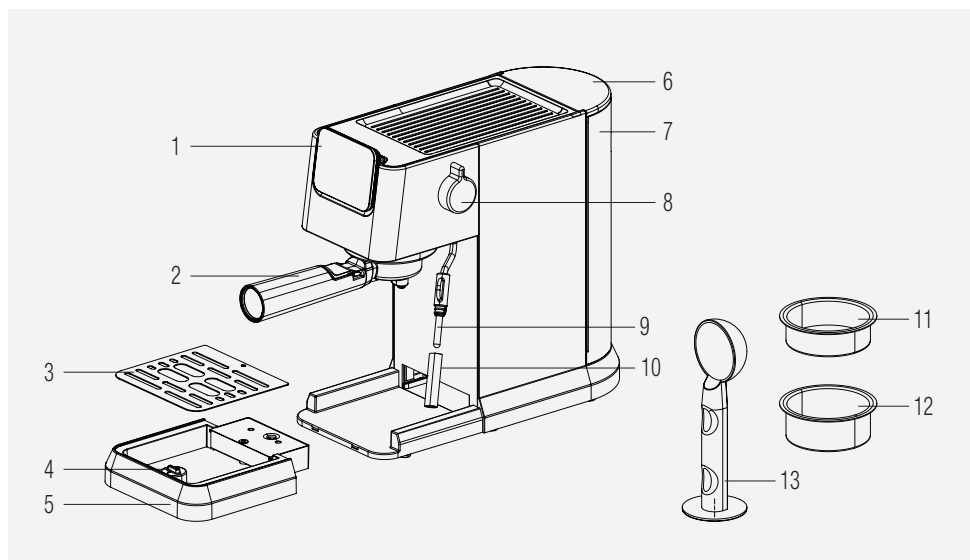
The product you have purchased complies with EU RoHS Directive (2011/65/EU). It does not contain harmful and prohibited materials specified in the Directive.

## 1.8 Package information



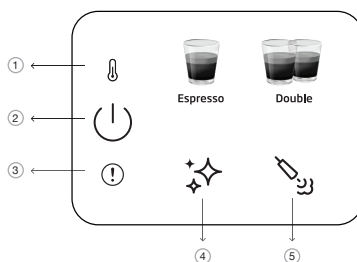
The packaging materials of the product were manufactured from recyclable materials in accordance with our National Environment Regulations. Do not dispose of the packaging materials together with domestic or other waste. Take them to the packaging materials collection points designated by local authorities

## 2 Overview & Control panel



1. Control panel
2. Portafilter
3. Drip tray grid
4. Floater
5. Drip tray
6. Water tank lid
7. Water tank
8. Steam/Hot Water Control Knob
9. Milk frother
10. Milk frother Cover
11. Single espresso basket
12. Double espresso basket
13. Coffee Scoop / Tamper

### 2.1 Control Panel



1		Pre-heating indicator
2		On/off & cancel button
3		General error
4		Cleaning and descaling button
5		Steam button

All declared values on the product and on the printed leaflets are picked up after laboratory measurements performed according to related standards. These values may differ upon usage and ambient conditions.

### 3 Technical data

**Power supply:** 220-240 V~, 50-60 Hz

**Power:** 1376 - 1628 W

The right to make technical and design changes is reserved.

All declared values on the product and on the printed leaflets were obtained from laboratory measurements performed according to the relevant standards. These values may differ depending on usage and ambient conditions.

**Product Dimensions:**

14,4 cm (Width) x 30,8 cm (Height) x 42,3 cm (Depth)

[Depth w/out portafilter 32,5 cm]

**Weight:** 3.85±0.5kg

**Cable Length:** >90 cm

**Basket Capacities**

**Single:** 8g

**Double:** 15g

**Drip Tray Capacity:** Up to 0.2 L

**Water Tank Capacity:** 1.1±5%L

**Machine Pre-heating time:** <55s

**Volume of coffee (Default settings):**

Espresso: 30-55ml

Double: 65-95ml



This button "❄️" will light up as orange when machine needs descaling.



- If knob is in wrong position during machine turn on or if maximum frothing duration is reached; the red error led will blink with the steam which means steam control knob (9) should be rotated towards closed position.
- If there is an NTC error, the red error indicator will be lit and there will be no response if any button is pressed. Call customer service for support.

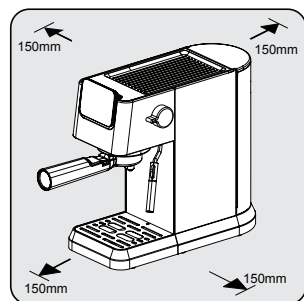


## 4 Preparation

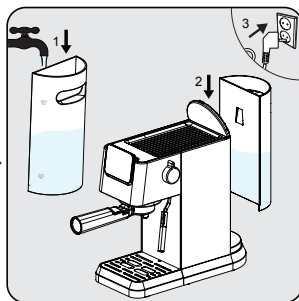
### 4.1 First Time Use



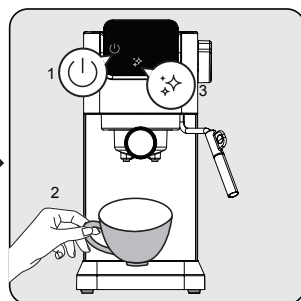
Remove any protective films, stickers and any other packaging material from the appliance.



Choose a safe and stable surface with an easily reachable power supply and allow the minimum distance from the sides of the machines.



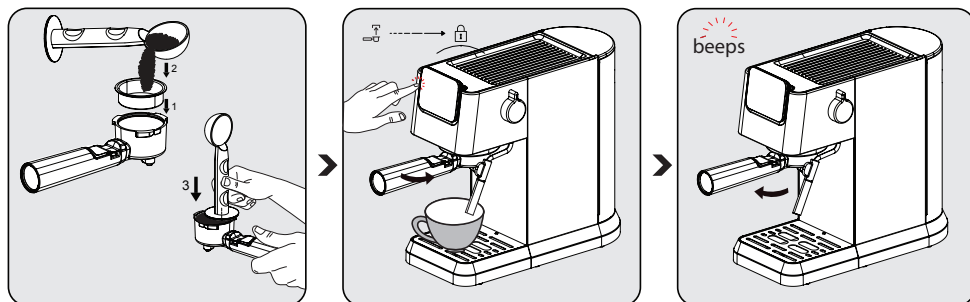
Fill the water tank with fresh, cold pure water at least up to the MIN marking and at most up to the MAX marking. (Do not add hot water)  
Then insert tank on to the machine and the other end of the power cord into a wall socket with the suitable power voltage.



The power on/off button "⏻" on the control panel will light up. Press that button to turn on the machine. Put a cup right under the brewing head and press the cleaning button "✦✦✦". The machine will sound one beep and start cleaning. Once completed the machine will be ready to use.

## 4 Preparation

### 4.2 Brewing Single / Double Espresso



Place the single or double espresso basket into the filter holder. Fill the freshly ground coffee powder into the filter with measuring spoon (approx. 7-14g) and use the spoon to flatten the excess powder. With the tamping end of the spoon, apply around 15 kg to push down the powder even and firmly.

Install the portafilter under the coffee outlet. Align it with the unlock symbol, slide it into the groove, and slowly rotate it to the right to the lock symbol.

- Place a coffee cup right under the coffee outlet.
- Press the single or double button and a beep will sound.
- Selected coffee will start blinking and the beverage preparation will begin.

After brewing is completed, machine will sound one beep and enter idle mode. Remove the portafilter clockwise. Clean the portafilter and dry it after each use.

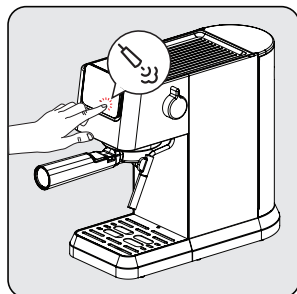


- Wait 5 seconds after brewing and then take out the filter. This will help remove the moving filter easily.
- Coffee powder cannot be used after brewing.
- Use the handle extension to knock the coffee residue out while keeping the basket in place.
- To ensure your espresso stays at optimum temperature, we recommend that you preheat your cups.
- To extract the fullest flavor from your coffee beans, we recommend using whole coffee beans that have been freshly ground each time espresso is prepared.
- In addition to the coffee used, using fresh cold water that is free of chlorine, odors and other impurities will help ensure the perfect espresso.
- Store your espresso grounds in an airtight container, and in a cool, dry place to retain the flavor. Grounds should not be kept for long periods of time as the flavor will be reduced.

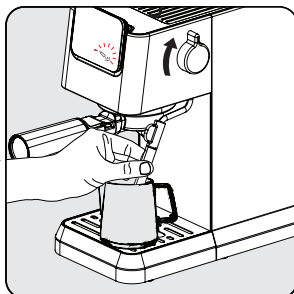
## 4 Preparation

### 4.3 Preparing Frothy Milk for Coffee

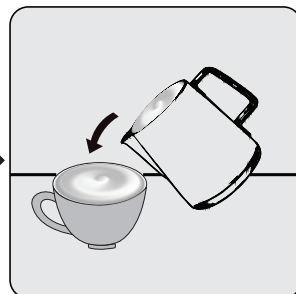
In order to make beverages that require milk such as cappuccino, latte and more; milk frother should be used to froth milk. Simply add frothed milk over one or two shots of espresso based on your preference.



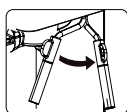
Press milk frother icon and wait for milk frother to be ready. While milk frother is pre-heating the indicator lights will flash. Once ready, "☺" will be constantly lit.



Place a milk filled cup or pitcher under the milk frother. Turn the knob into on position and froth until desired temperature/foam is obtained. To stop, turn back the knob into initial position.



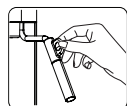
Pour the hot frothy milk onto the espresso. You can now enjoy your coffee!



Milk frother can be rotated towards the right for easier handling purposes.



- After using the milk frother, please clean the nozzle of milk residue by wiping the nozzle with the wet cloth.
- The maximum duration for single use frothing is 90s.



Be aware that the cup/pitcher and milk frother can get hot during milk frothing. Please only hold the black protector after using steam function.



- Considering the milk frothing inside the cup/pitcher, do not fill it entirely.
- Do not pull away the cup/pitcher without stopping the frothing process.
- Turn the steam knob into off position before turning off the device and do not turn the steam knob into on position when the device is turned off.

## 4 Preparation

### 4.4 Hot Water Function

The appliance can dispense hot water by simply turning the steam/hot water knob into "on" position in idle stage "☁️"



- This function can be used to heat up the cup before coffee preparation. First fill the cup with hot water, then pour away the water and use this cup for preparing coffee.
- Americano can be made by adding hot water over espresso.



If steam is recently used, it is suggested to wait for cool-down before using hot water function.

### 4.5 Adjusting Height for Different Cup Size

For bigger cups, drip tray (6) can be removed and machine base can be used.



If drip tray is removed for bigger cups, it should be placed back into the machine right after beverage preparation is completed. If drip tray is not placed back after beverage preparation, due to internal system release, water might come to the base and would need a manual cleaning with dry cloth.

## 5 Operation and use

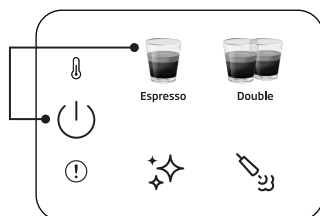
### 5.1 Adjusting the Volume of your Coffee

#### Setting amounts for Single & Double Espresso

1. Select the function that is to be reprogrammed. Press the appropriate button (single or double espresso) and keep it held down. You will hear one beep. [single/double espresso programmable amounts (min: 30/60ml, max: 50/100ml)]
2. Only let go of the button once the desired amount of coffee has passed through. You will hear two beeps. This amount is now saved under the corresponding function.

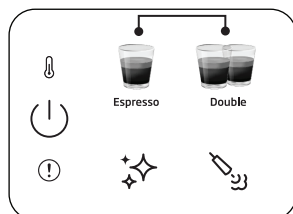


The adjusted beverage settings will be saved to device memory for future use until resetted or changed again.



#### To reset single beverage to default/factory setting:

Press and hold down any beverage and power buttons together for more than 3 seconds to reset the selected beverage amount.



#### To reset all beverages to default/factory setting:

Press and hold down single and double espresso buttons together for more than 3 seconds to reset the all beverage amount.



Standby time: The machine will automatically shut down after 29 minutes without any operation (or after work).

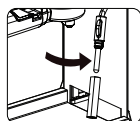
### 5.2 Cancelling

On-off button should be pressed once to cancel any running process.

## 6 Cleaning

### 6.1 Cleaning the Milk Frother

Use the hot water function to remove any milk residue that may accumulate on the tip of the milk frother. The milk frother cover can be detached and cleaned under water.



Clean inside the milk frother with wet cloth after each use to avoid milk residue and ensure full frothing performance.

### 6.2 Cleaning/Rinsing Function

For cleaning the brewing head, place a container under the brewing head and press the cleaning button "✦✦". Cleaning will be completed within 16 seconds and the machine will be ready to use.

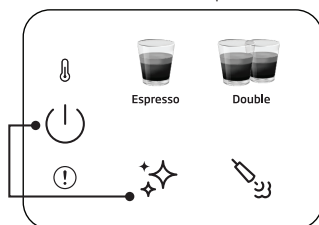


- If you do not use the machine for more than 5 consecutive days, rinse and drain the water tank.
- Drip tray and its grid (6) (4) can be cleaned manually under clean water.
- Do not put the portafilter into the dishwasher.

### 6.3 Descale Function

When descaling is required, descale icon "✦✦" will light up as orange. Place a container that can hold 1.5L under the brewing head. Pour water into the water tank until MAX level and mix with scale remover or citric acid. Press & hold descale button "✦✦" for more than 3 seconds and you will hear two beep sounds which indicates that the first cycle of descaling has begun. The first cycle will take around 15 minutes. Once completed, the descale icon will turn white "✦✦".

Empty and replace the container under the brewing head. Clean and fill water tank until MAX level with clean water. Press & hold descale button "✦✦" for more than 3 seconds and you will hear two beep sounds which indicates that the second cycle of descaling has begun. The second cycle will take around 6 minutes. Once all complete, the machine will go back to idle stage and will be ready to use.



#### To reset descale warning status:

Press and hold power and descale button together for more than 3 seconds.



- Descale is required after predefined brewing cycle.
- Resetting descaling warning status is not suggested for maintaining the best condition of the appliance.

## 7 Troubleshooting

### 7.1 Problems, possible causes and remedies

Problem	Cause	Remedy
<b>Coffee runs down the side of the portafilter.</b>	Portafilter (2) is not properly inserted.	Turn the handle of the portafilter (2) further to the right.
	Edge of sieve is not free of ground coffee	Turn off the machine, remove the portafilter (2) holder and clean the edges of the sieve.
	Screen inside brew head is dirty.	Clean the brew head using a wet cloth and run the cleaning function without placing the portafilter.
<b>Very little or no coffee flows through the portafilter.</b>	No water in tank.	Fill the tank with water.
	The screen inside the brew head is blocked.	Brew water through the screen without the portafilter (2) inserted. If no water comes through, unscrew the screen, clean and replace.
	The sieve is blocked.	Correction: Clean the sieve, insert into the portafilter (2) and pump water through without coffee. If no water comes through the sieve call Customer Service to order a replacement sieve.
	Pump does not work due to device operating with empty water tank.	Turn on the steam/hot water knob for 2 seconds and then turn it off. Then press the coffee program and the water pump will work normally.
<b>Espresso brews out only as drops.</b>	Coffee grounds are too fine or packed down too firmly.	Do not tamp coffee grounds so firmly. Use a coarser grind of coffee.
	Machine blocked by calcium deposits.	Descale the appliance. See page 15.
<b>Espresso brews too quickly.</b>	Ground coffee is too coarse.	Use a finer grind.
	Not enough coffee in the sieve.	Use more ground coffee.
<b>No crema.</b>	Coffee old or too dry.	Use fresh coffee.
	Coffee not pushed down firmly enough. Water pushes through the coffee too fast.	Tamp coffee grounds more firmly. Use a finer grind.
	Coffee too coarse.	Use a conical burr grinder to obtain a finer and more consistent grind.
	Coffee blend not suited to espresso coffee.	Change brand of espresso.
<b>Not enough froth when frothing milk.</b>	Milk not fresh.	Use fresh milk.
	Milk not suitable.	Check that the milk is suitable for frothing.
	Milk was too warm from the start.	Use milk straight from the refrigerator (34°F).
	Not enough milk to froth.	Use more cold milk.
<b>No steam from milk frother.</b>	Milk inlet hole is blocked.	See "Cleaning the Milk Frother". If it is clear of dried milk deposits but no steam comes out, then use the descaling function. If the appliance is still blocked, call Customer Service.

EN-Additional Information for User Manual:

Technical information on the operating Low Power Modes pursuant to EU Regulation 2023/826

Mode	POWER CONSUMPTION(WATT)	PERIOD(MINUTES)*
Off	0,5	30
Standby	-	-
Standby Mode with information or status display	-	-
Networked Standby	-	-

\*:The period after which the equipment reaches automatically standby mode, off mode or networked standby in minutes and rounded to the nearest minute.





55 Blanck Street, Ormeau Q 4208  
P O Box 354, Ormeau Q 4208  
p : 5549 3146 f : 5549 3546  
ABN : 49 152 055 162

# ORIGINAL MANUFACTURER'S WARRANTY ADVICE FORM

## BEKO COFFEE MACHINE

**24 months warranty, full parts and labour warranty only.**

### WARRANTY CONDITIONS

The following conditions apply only in relations to the warranty expressly given on this Warranty Advice Form supplied with the product. This warranty only applies to appliances purchased and used in Australia or New Zealand and is in addition to (and does not exclude, restrict or modify in any way) other rights and remedies under a law to which the appliances relate, including any non-excludable statutory guarantees in Australia and New Zealand. It applies to the original purchaser and for appliances used in domestic applications only.

1. This warranty does not apply:
  - (a) if the identification number attached to the appliance has been altered, rendered illegible or removed;
  - (b) to light globes;
  - (c) to paint and vitreous enamel finishes and glass;
  - (d) to surfaces damaged by use of aerosols or cleaners;
  - (e) if the appliance has been –
    - (i) subject to misuse, abuse, negligence, accident, fire or floods;
    - (ii) connected or improper, inadequate or faulty electricity, gas, water or drainage services or intake or exhaust ducts or flues, or operated using incorrect or contaminated fuels or lubricants;
    - (iii) installed, maintained or operated otherwise than in accordance with the instructions furnished by Beko including the improper use of detergents, bleaches, cleaners or other additives;
    - (iv) damaged by foreign objects in the appliance;
    - (v) serviced, repaired or altered otherwise than by Beko authorised service agents of Beko, or using other than Beko approved replacement parts.
2. The purchaser shall be responsible for any expenses involved in making the appliances readily accessible for servicing, the purchaser shall be responsible for any costs of transporting the appliance or parts thereof to and from the nearest Beko authorised service agent.
3. This warranty is the only expressed warranty given by Beko.
4. Beko reserves the right to determine whether or not the fault is caused by faulty workmanship or material or that any part is defective.
5. Where permitted by law, this warranty shall not apply to loss suffered through or resulting from the non-operation or the ineffective operation of the appliance or any part of the appliance.
6. The purchaser must produce proof of the date of purchase together with this Warranty Advice Form when making a claim.
7. Subject to your statutory rights as to the merchantable quality of the product or accessory. In the event of a product or accessory being replaced during the guarantee, the guarantee on the replacement will expire at the original date, i.e., 24 months from the original purchase date.
8. Australia: For Appliances and services provided by Beko in Australia, Beko goods come with a guarantee by Beko that cannot be excluded under the Australian Consumer Law. You are entitled to a replacement or refund for a major failure and for compensation for any other reasonably foreseeable loss or damage. You are also entitled to have the Appliance repaired or replaced if the Appliance fails to be of acceptable quality and the failure does not amount to a major failure. 'Acceptable quality' and 'major failure' have the same meaning as referred to in the Australian Consumer Law.
9. New Zealand: For Appliances and services provided by Beko in New Zealand, the Appliances come with a guarantee by Beko pursuant to the provisions of the Consumer Guarantees Act, the Sales of Goods Act and the Fair Trading Act. Where the Appliance was purchased in New Zealand for commercial purposes the Consumer Guarantee Act does not apply.

These Warranty Conditions supersedes and excludes all other representations, conditions and warranties, except those implied by legislation previously referred to.

**For Service or Spare Parts: Aust 1300 282 356 NZ 0800 692 356**

Beko A&NZ Pty Ltd  
55 Blanck Street , Ormeau QLD,  
4208 AUSTRALIA

[www.beko.com.au](http://www.beko.com.au)