



**beko**Turkish Coffee Maker  
BKK-2113P

## Quick User's Guide

### Important Warnings


1. Always operate your machine plugged into a grounded socket!
2. You should not carry your product when the water reservoir is full.
3. Operate your machine on a flat and unbent surface.
4. Take out the cooking reservoirs from their seatings while carrying your machine!
5. Never use the cooking reservoir in any heaters other than your Turkish Coffee Machine! (Oven, etc.).
6. Your machine will switch to standby mode automatically after a beep sound if no process is carried out for 3 minutes. The device will be supplied power together with a warning sound when you place the cooking reservoir into its seating or take it out from its seating!

 The surface of the heater as well as the outer surface of the cooking reservoir will be hot after the cooking process is finished. Avoid touching! 



### 2 Cooking Coffee


1. Put coffee and sugar in to the cooking reservoir according to your wishes (material for 1 or 2 persons according to your desire)

 You may use the coffee measurement spoon supplied with the machine. Use fresh coffee for a good taste and foam.



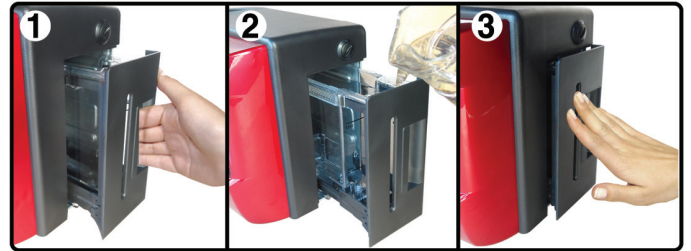
2. Place the reservoir into its seating vertically as to completely touch the back.



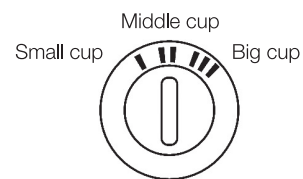
 Ensure that the reservoir is seated properly! Otherwise, your product shall not operate.


### 1 Preparing

1. Put the plug into the outlet.
2. Fill the water into the water reservoir.



3. Adjust the amount of the water according to the cup.



 Adjustment can be done by using the handle of the measure spoon

4. Press the on-off button.

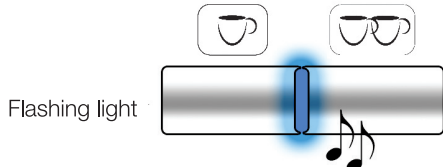
4. Press the buttons which are marked with for single cup and  for double cups



Your machine will first take water and then switch to cooking phase. Don't take the reservoir from its seating before the status indicator "cooked signal" blinks blue

## 3 Serving Your Coffee

1. Take out the reservoir from its seating when your machine signals that the coffee is cooked.



- i** Foam of the coffee may blow out and the coffee ground may settle down to the bottom of reservoir if the cooked coffee is kept in the machine for a long time.

### 2. Pour the coffee into your cup.

- i** Pour the cooked coffee into the cup quickly in order to transfer the coffee grounds and foam completely.



Enjoy your coffee...

## 4 Cleaning

1. Wash your reservoir by hand after every cooking.



Do not use abrasive, scratching sponge and steel wool.

2. Wipe the reservoir seating and especially the cooking detection sensor glass with a damp cloth after every 15-20 cooking.



3. Once in three months you should wash your water reservoir by hand.



4. Carry out the general cleaning of your machine with a damp cloth.



Do not wash any part of your machine in the dishwasher.

## Over View

