



# Steam Generator

User Manual



SGA8328B

EN

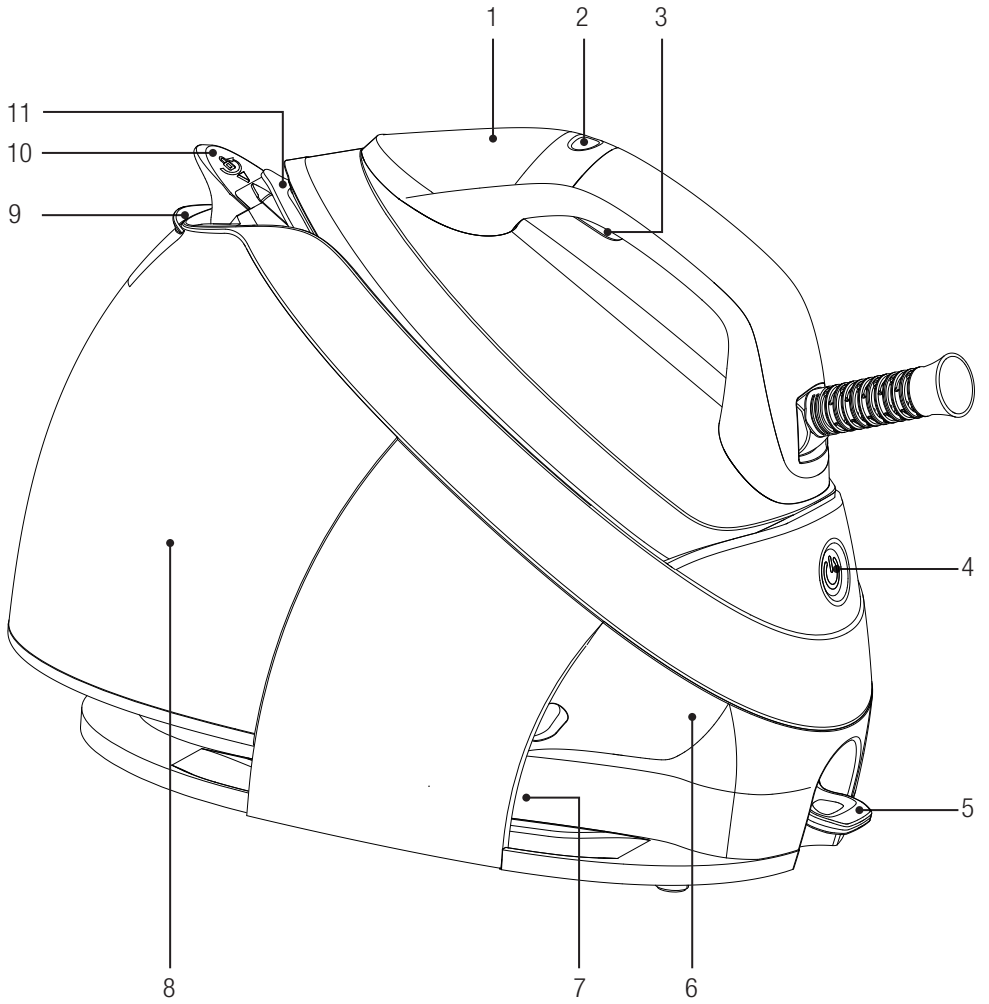
# CONTENTS

---

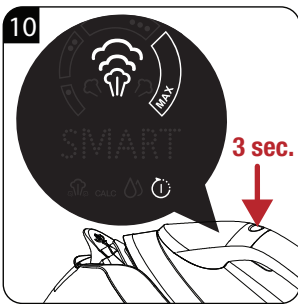
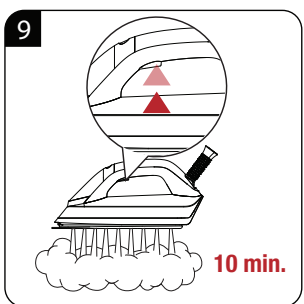
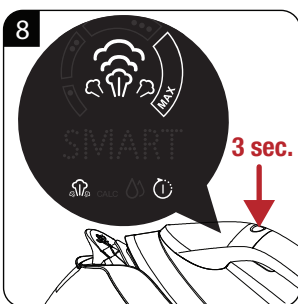
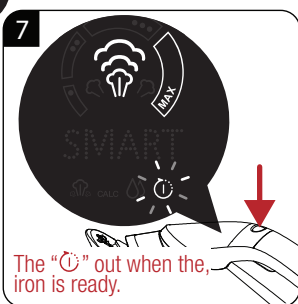
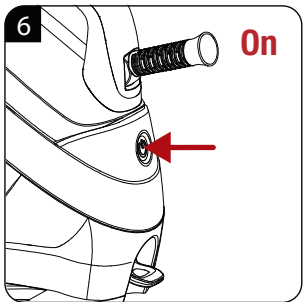
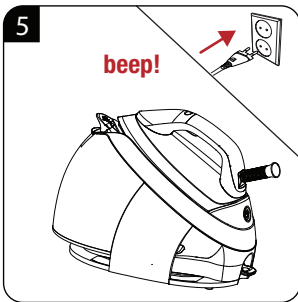
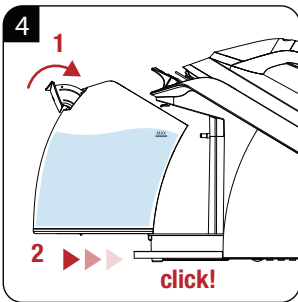
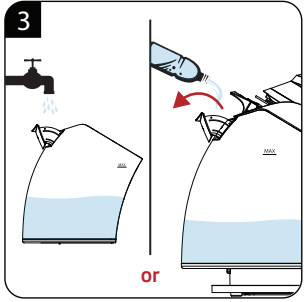
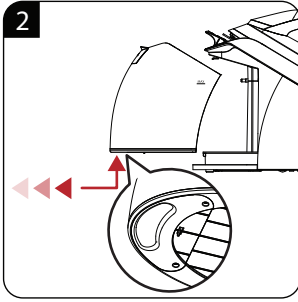
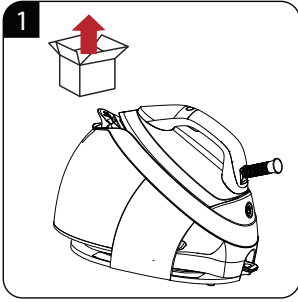
**ENGLISH**

**8-19**

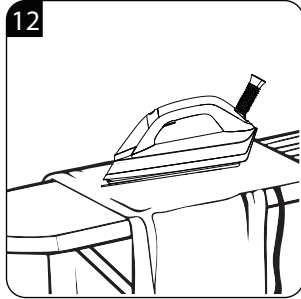
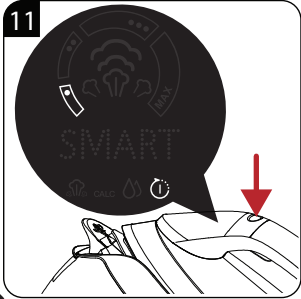
---



				
<b>EN</b>	FIRST USE	TURBO MODE	DRY IRONING	STEAM IRONING
				
<b>EN</b>	AUTOMATIC SHUTDOWN	CLEANING AND CARE	SELF-CLEAN	MOVING

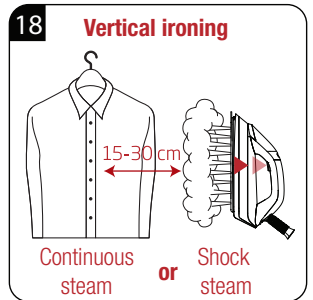
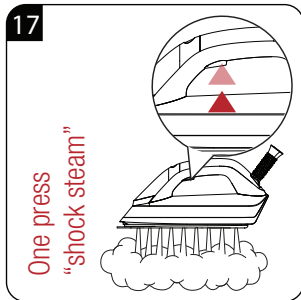
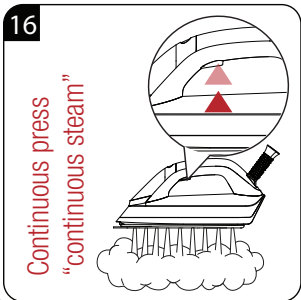
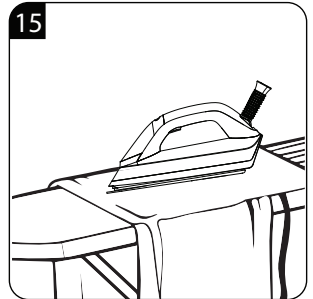
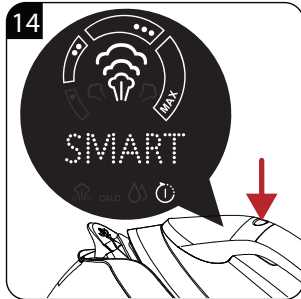


Dry Ironing

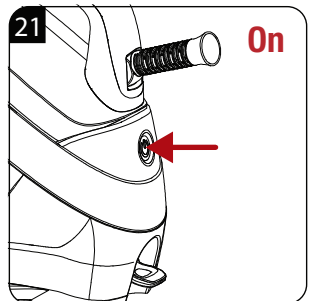
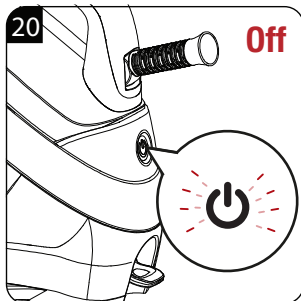
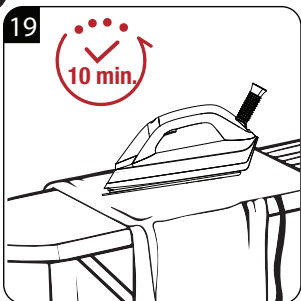


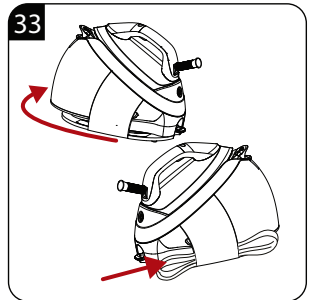
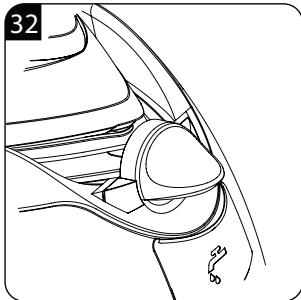
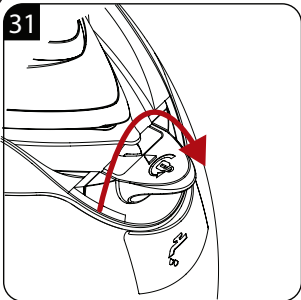
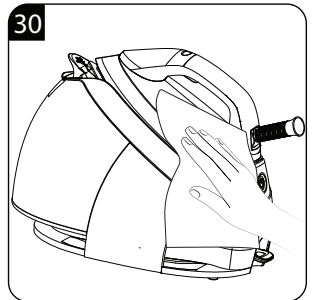
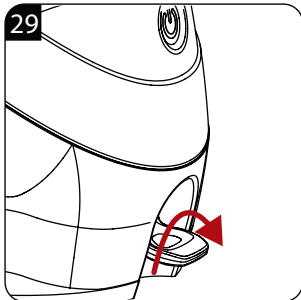
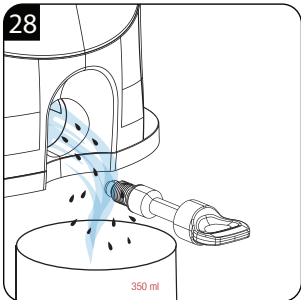
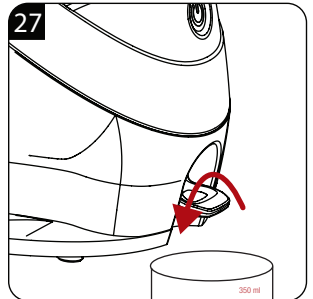
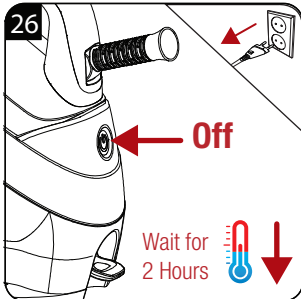
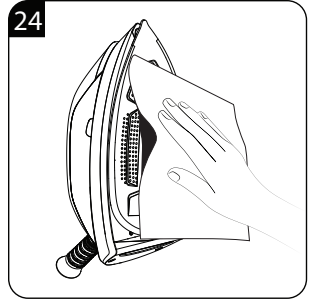
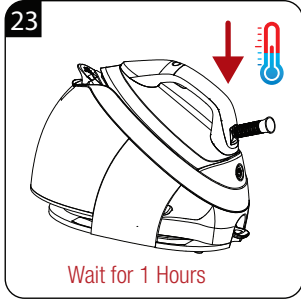
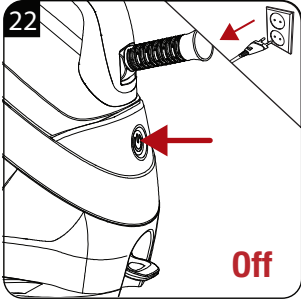
Steam Ironing

Fabric Type	Temperature Setting	Steam Setting
Synthetic	•	—
Silk	••	☂
Cotton	•••	☂☂
Linen - Jean	Max	☂☂☂
All fabrics	Smart	Smart



Auto-Off





## Please read this manual first!

Dear Customer,

Thank you for preferring this Beko product. We hope that you get the best results from your product which has been manufactured with high quality and state-of-the-art technology. Therefore, please read this user manual and all other accompanying documents carefully before using the product and keep it as a reference for future use. If you handover the product to someone else, give the user manual as well. Follow all warnings and information in the user manual.

## Meanings of the symbols

Following symbols are used in the various sections of this manual:



Important information and useful hints about usage.



**WARNING:** Warnings against dangerous situations concerning the security of life and property.



**WARNING:** Warning for hot surfaces.



**WARNING:** Risk or burning and scalding due to steam.



**WARNING:** Warning for electric shock.



This product has been manufactured in environmental friendly modern plants without giving any harm to the nature.

---



## Control and parts

1. Control panel
2. Control button
3. Steam trigger
4. On/off button
5. Lime removal cover
6. Steam station
7. Cord storage compartment
8. Removable water tank
9. Water refill lid
10. Transport lock
11. Soleplate

## Technical data

**Power supply :** 220-240V~ 50-60Hz







**Power :** 2350-2800W

**Pump pressure :** 7.2 bar

**Continuous steam amount :** 130 g/min (in the max turbo mode)

**Shock steam :** 450 g/min

Technical and design modification rights are reserved.

Control panel	Symbols	Descriptions
		Temperature settings
		Steam level
		Turbo mode
	SMART	Smart mode
	CALC	Calc removal is needed
		Water reservoir is empty
		Iron is getting ready

The values which are declared in the markings affixed on your appliance or the other printed documents supplied with it represent the values which were obtained in the laboratories pursuant to the pertinent standards. These values may vary according to the usage of the appliance and ambient conditions.

# 1 Important safety and environmental instructions

This section contains safety instructions that will help protect from risk of personal injury or material damage.

Failure to follow these instructions invalidates the granted warranty.

## 1.1 General safety

- This appliance complies with the international safety standards.
- This appliance is intended to be used in household and similar applications such as:
  - Staff kitchen areas in shops, offices and other working environments;
  - Farm houses
  - By clients in hotels, and other residential type environments;
  - Bed and Breakfast type environments.

It is not fit for industrial use.

- This appliance can be used the children who are at the age of 8 and above and by people who have limited physical, sensory or mental capacity or who do not have knowledge and experience, provided that they are supervised or they understand the instructions with regard to safe use of the product and potential dangers. Children should not play with the appliance. Cleaning and user maintenance procedures should not be performed by children unless they are supervised by an older person.
- Do not leave the appliance unattended while it is plugged in.
- Unplug the appliance before filling the water reservoir with water.
- Do not open the water refill hole during usage.
- Operate and store the appliance on a stable surface.
- When the appliance is placed on its base plate, ensure that the surface beneath the plate is level.

# 1 Important safety and environmental instructions

- Always rest your iron on the base.
- If the appliance is dropped or leaks water or has other failures, contact the authorised service. Do not use the appliance until it is repaired.
- When the appliance is in use or left to cool down, keep the appliance and power cable out of reach of children under 8 years old.
- The appliance is not suitable for outdoor use.
- Only use the original parts or parts recommended by the manufacturer.
- Use the appliance only when it is connected to the steam iron station.
- Do not dismantle the appliance.
- Your mains power supply should comply with the information supplied on the rating plate of the appliance.
- The mains supply of the appliance should be secured with a 16 A fuse minimum.
- Use the appliance with a grounded outlet.
- Do not use the appliance with an extension cable.
- Do not pull the power cable when unplugging the appliance.
- If the power cable is damaged, it should be repaired or replaced by the dealer, service center, or a specialised and authorised service with similar qualifications.
- Unplug the appliance before cleaning.
- Do not wrap the cable around the appliance.
- Do not touch the appliance or its plug with damp or wet hands when the appliance is plugged in.
- The soleplate and the steam station surface may get overheated. Contact with hot surfaces may cause burns.
- Do not use the appliance in or near the areas where combustible or inflammable places and materials exist.

# 1 Important safety and environmental instructions

- If you keep the packaging materials, store them out of the reach of children.
- For detailed information on cleaning the appliance, please refer to the section Cleaning and maintenance.
- Make sure that the appliance is cold before opening the lime removal cover. After using the appliance, you should wait for about 2 hours before opening the cover of the appliance.

## 1.2 Compliance with WEEE Directive and Disposing of the Waste Product

This product complies with EU WEEE Directive (2012/19/EU). This product bears a classification symbol for waste electrical and electronic equipment (WEEE).



This symbol indicates that this product shall not be disposed with other household wastes at the end of its service life. Used device must be returned to official collection point for recycling of electrical and electronic devices. To find these collection systems please contact to your local authorities or retailer where the product was purchased. Each household performs important role in recovering and recycling of old appliance. Appropriate disposal of used appliance helps prevent potential negative consequences for the environment and human health.

## 1.3 Compliance with RoHS Directive

The product you have purchased complies with EU RoHS Directive (2011/65/EU). It does not contain harmful and prohibited materials specified in the Directive.

## 1.4 Package information



Packaging materials of the product are manufactured from recyclable materials in accordance with our National Environment Regulations. Do not dispose of the packaging materials together with the domestic or other wastes. Take them to the packaging material collection points designated by the local authorities.

## 1.5 Plug Wiring

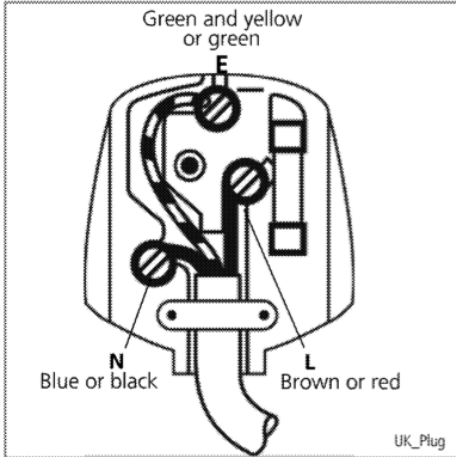
The moulded plug on this appliance incorporates a 13 A fuse. Should the fuse need to be replaced an ASTA approved BS1362 fuse of the same rating must be used. Do not forget to refit the fuse cover. In the event of losing the fuse cover, the plug must not be used until a replacement fuse cover has been fitted. Colour of the replacement fuse cover must be the same colour as that visible on the pin face of the plug Fuse covers are available from any good electrical store.

### • Fiting a different plug

- As the colours of the wires in the mains lead of this appliance may not correspond with the coloured markings identifying the terminals on your plug, proceed as follows:
- Brown cable = L (Live)
- Blue cable = N (Neutral)
- Green/yellow cable must be connected to ground (E)  $\equiv$  line

# 1 Important safety and environmental instructions

- With the alternative plugs a 13 A fuse must be fitted either in the plug or adaptor or in the main fuse box. If in doubt contact a qualified electrician.



## 2 Operation

### 2.1 Intended use

This appliance is intended only for household use and ironing; it is not suitable for professional use.

### 2.2 Initial use



- Before the first operation, add water to the water reservoir (8) and steam for 10-15 minutes before ironing to remove any production residues.
- A light odour may arise during the initial use. This condition will return to normal after several uses.

### 2.3 Ironing tips

- The appliance gets heated in a short time; iron fabrics such as synthetic and silk at first by using low temperature settings.
- Iron fabrics that may have a luster (silk etc.) by turning them inside out or by using the appliance in "SMART" mode.
- Use very little pressure when ironing fabrics such as velvet and iron them towards one single direction.
- Steam usage may cause stains on coloured silk fabrics. Do not use steam.
- 100% pure woolen clothes can be ironed by using steam.
- Ironing woolen clothes may cause a luster. Iron by turning them inside out.



**WARNING:** Do not allow the iron to contact with metal parts such as zippers and rivets. This may damage the soleplate of the iron.

### 2.4 Filling the water reservoir



#### WARNING

- When filling the water reservoir with water without removing it from the steam station, ensure that the appliance is unplugged.
- Do not soak the steam station (6) in water or other liquids. Never put vinegar, descaling agent, laundry starch, perfume or other auxiliary products that help ironing into the appliance.



- When you press the steam trigger (3) while the water reservoir is empty, the water reservoir empty symbol "⚠" is illuminated on the display within approx. 20 - 30 seconds.
- Your appliance is suitable to be used with tap water. If your tap water is excessively hard, we recommend you to use a mixture of tap water and potable water.

### 2.5 Temperature setting

Fabric Type	Temperature Setting	Steam Setting
Synthetic	•	Without steam
Silk	••	With Steam
Cotton	•••	With Steam
Linen Jean	- Max	With Steam



"SMART" mode of your appliance is suitable for all types of fabrics that can be ironed. You can do steam ironing by using the steam trigger (3) in this mode.

## 2 Operation



### WARNING

- You can do steam ironing at all temperature levels except for “●” setting. Press the steam trigger (3) for steam ironing.
- Take the ironing instructions specified on the label of the fabric into consideration for ironing.

### 2.6 Dry ironing

Your appliance will not raise steam as long as you do not press the steam trigger (3).

In order to use dry ironing, do not press the steam trigger (3).

### 2.7 Steam ironing



- Please note that the steam button operates in intervals of 1 minute. After 1 minute of operation the steam function stops. To start again hold the steam button.
- Operation of the pump may make some noise during the water drawing process; this is normal.
- The appliance starts in Smart mode in the initial use. This level offers safe temperature and steam amount for all the fabrics that can be ironed.
- Except for the “SMART” mode, you may adjust other temperature levels by using the control button (2).



### WARNING

- Your selection shall comply with the type of the cloth to be ironed.
- While the iron is being prepared symbol “☺” in the control panel (1) is flashing, this means that the base temperature is being prepared to reach the selected setting. When the iron is being prepared symbol “☺” in the control panel turns off completely, the base temperature has reached the selected temperature level.



- You can do steam ironing by using the steam trigger (3) at all temperature levels except for “●”.
- When the appliance is ready for ironing, move the iron horizontally on the cloth to be ironed and press the steam trigger (3). Your iron will raise steam from its soleplate (11) as long as you hold the steam trigger pressed.

### 2.8 Turbo mod



- Use the turbo steam feature for more steam and for quick ironing on thicker clothes.
- After running for 12 minutes at Turbo level, the product will automatically switch to the Max. level.
- To exit from the Turbo mode, press the control button (2) for 3 seconds.

## 2 Operation

### 2.9 Vertical steam



- You can iron your curtains and hanged garments thanks to the vertical steam feature. Keep the appliance 15-30 cm away from the garment and curtains.
- You can do steam ironing by using the steam trigger (3) at all temperature levels except for “●”.
- You may also use the Turbo feature.



**WARNING:** Never direct the steam to people or pets.

### 2.10 Automatic Shutdown (Auto-Off)



- If you do not move the appliance or press any of its buttons for 10 minutes, it will shut down automatically.
- It may take time for the soleplate (11) to reach the previous temperature level.



**WARNING:** In the automatic shutdown mode, the product will not shut down if you press the on/off button (4) until you unplug it. The on/off button will start to flash in ten minutes and the product will switch to stand-by.



## 3 Cleaning and care

### 3.1 Cleaning

#### WARNING

- Do not soak the steam station (6) in water or other liquids. Never put vinegar, descaling agent, laundry starch, perfume or other auxiliary products that help ironing into the appliance.
- Do not use gasoline, solvent and abrasive cleaning agents or hard brush to clean the appliance.
- Do not use abrasive cleaning agents to clean the soleplate (11).



**WARNING:** Do not wash your appliance under running water or do not soak it in water or other liquids.



### 3.2 Lime cleaning (Self-Clean)

#### WARNING

- Do not open the scale removal cover (5) while your appliance is hot.
- Before performing descaling operation on your appliance, allow it to cool down for at least 2 hours.



### 3.3 Storage

- If you do not intend to use the appliance for a long time, store it carefully.
- Unplug the appliance and wait for it to cool completely before storing it.
- Discharge the water in the water reservoir (8).
- Lock the handling lock (10) of the appliance.
- Store it in a cool and dry place.
- Keep the appliance out of the reach of children.

### 3.4 Moving and transportation

- Carry the appliance in its original packaging during moving and transportation. The packaging of the appliance protects it against physical damages.
- Do not place heavy loads on the appliance or the packaging. The appliance may be damaged.
- Dropping the appliance may render it non-operational or cause permanent damage.

The values which are declared in the markings affixed on your product or the other printed documents supplied with it represent the values which have been obtained in the laboratories pursuant to the pertinent standards. These values may vary according to the usage of the appliance and ambient conditions.



For commissioning, general use and cleaning, please observe the instructions on pages 5 - 6 and 7 of this operating manual.

## 4 Troubleshooting

Problem	Possible cause	Solution
The base does not heat (11) although the appliance is plugged.	There may be a problem with the connection.	Check the plug and the power cord of the appliance
		Press the on/off button (4).
		Contact the authorized service if the appliance does not operate although the appliance is plugged and you have pressed the on/off button.
The appliance does not produce steam.	The amount of water in the water reservoir may be inadequate.	Fill the water up to the MAX line in the water reservoir.
		Check if the water reservoir (8) is installed in its housing.
		The appliance does not provide steam if the temperature is set to “●” position. Bring the temperature setting to “●●”, “●●●” or “MAX” position.
Water droplets drip on the cloth.	Water may come out when you press the steam trigger (3) before the appliance reaches the set temperature.	When the iron is being prepared symbol “☺” in the control panel (1) turns off completely, your appliance is ready for ironing.
Sediments and residues fall off from the base (11) while ironing.	Such sediments may occur if the water you use in your appliance is too calcareous.	Fill the water reservoir of the appliance by mixing the tap water and drinking water for your next ironing operations.
There are stains on the base (11).	Wet clothes are ironed / scale stains have occurred on the base (11).	Wipe the sediments and residues with a lightly dampened cloth after the appliance is cooled down adequately.
The on/off button (4) of the appliance flashes.	The appliance may have switched to auto off mode.	Press the on/off button (4).
The “ <b>CALC</b> ” symbol flashes on the control panel (1).	The time for descaling has come.	Perform the descaling operation.

## Product Guarantee

### **12 months breakdown and repair guarantee**

Guarantor: **Beko plc, 1 Greenhill Crescent, Watford, Hertfordshire. WD18 8UF**

The guarantee does not in any way diminish your statutory or legal rights.

Your **appliance** has the benefit of our manufacturer's guarantee which covers the product for 12 months from the date of original purchase.

This gives you reassurance that if within that time, your **appliance** is proven to be defective because of either workmanship or materials, we will at our discretion either repair or replace your **appliance**.

The **appliance** must be correctly installed, located and operated in accordance with the instructions contained in the user manual. The guarantor disclaims any liability for accidental or consequential damage.

#### The Guarantee is subject to the following conditions:

- Documentary proof of the original purchase date is provided.
- The appliance has been installed and operated correctly and in accordance with our operating and maintenance instructions.
- The appliance is used only on the electricity supply on the rating plate.
- The appliance has only been used for normal domestic purposes.
- The appliance has not been altered, serviced, dismantled or otherwise interfered with by any person.
- The appliance is used in the United Kingdom or Republic of Ireland.
- Any parts removed during repair work or any product that has been replaced becomes our property.
- The guarantee is not transferrable if the product is resold.

#### The Guarantee does not cover:

- Transit, installation or delivery damage.
- Accidental damage.
- Misuse or abuse.
- Replacement of any consumable item or accessories. These include but are not limited to: plugs, cables, light bulbs, knobs, filters and flaps.
- Repairs or replacements required as a result of unauthorised repairs or inexperienced installation that fails to meet the requirements contained in the user guide or instruction book.
- Repairs to products used in commercial or non-residential household premises.

### **How to obtain after sales service, help or general advice**

**Please keep your purchase receipt or other proof of purchase in a safe place as you will need to show us this document if your product requires attention within the guarantee period.**

Please also record your product details below, which will allow you to access our services more quickly and help us identify your product. The model number is printed on the front of the user guide and the serial and model number is shown on your products rating plate.

<b>Model number</b>	<b>Serial number</b>	<b>Purchased from</b>	<b>Date of purchase</b>

Please call our UK based Customer Service department if you need help or advice from us:

United Kingdom and Northern Ireland: **0333 207 9710**

Republic of Ireland: **01 862 3411**

You can also contact us through our website: **[www.beko.co.uk](http://www.beko.co.uk)**

Arçelik A.Ş.  
Karaağaç Caddesi No: 2-6, 34445,  
Sütlüce, İstanbul, Türkiye

[www.beko.com](http://www.beko.com)