

Steam Generator

User Manual



SGA8328D

EN

01M-8811663200-0218-02

beko

CONTENTS

1 Your steam generator 3-4

1.1 Overview 3

1.2 Technical data..... 4

2 Important safety and environmental instructions 6-8

2.1 General safety..... 6

2.2 Compliance with WEEE Directive and
Disposing of the Waste Product 8

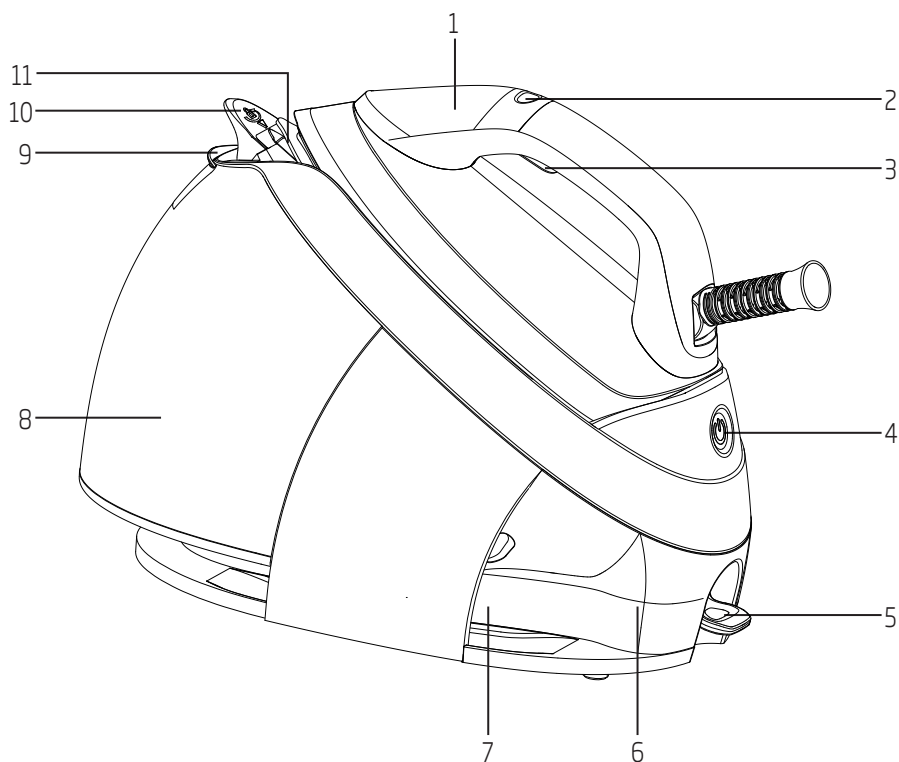
2.3 Compliance with RoHS Directive 8

2.4 Package information..... 8

2.5 Plug Wiring 8

1 Your steam generator

1.1 Overview



Please read this manual first!

Dear Customer,

Thank you for preferring this Beko product. We hope that you get the best results from your product which has been manufactured with high quality and state-of-the-art technology. Therefore, please read this user manual and all other accompanying documents carefully before using the product and keep it as a reference for future use. If you handover the product to someone else, give the user manual as well. Follow all warnings and information in the user manual.

Control and parts

1. Control panel
2. Control button
3. Steam trigger
4. On/off button
5. Calc collector
6. Steam station
7. Cord storage compartment
8. Removable water tank
9. Water refill lid
10. Transport lock
11. Soleplate

Meanings of the symbols

Following symbols are used in the various sections of this manual:



Important information and useful hints about usage.



WARNING: Warnings against dangerous situations concerning the security of life and property.



Warning for hot surfaces.



Risk or burning and scalding due to steam.

Kind Remind: Use steam button less than 1 min. interval to get best steaming performance. The appliance will stop steaming after 1 min. unless you hold the steam button again.

1.2 Technical data

Power supply	:
220-240V~ 50-60Hz	
Power	: 2350-2800W
Pump pressure	: 7,2 bar
Continuous steam amount	: 150 g/min (in the max turbo mode)
Shock steam	: 450 g/min

Technical and design modification rights are reserved.











This product has been manufactured in environmental friendly modern plants without giving any harm to the nature.



It does not contain PCB.
Made in P.R.C.

1 Your steam generator

Control panel	Symbols	Descriptions
		Temperature settings
		Steam level
		Turbo mode
		Smart - mode
		Calc removal is needed
		Water reservoir is empty
		Iron ready

2 Important safety and environmental instructions

This section contains safety instructions that will help protect from risk of personal injury or material damage.

Failure to follow these instructions voids any granted warranty.

2.1 General safety

- This appliance complies with the international safety standards.
- This appliance can be used by children who 8 and above and by people who have limited physical, sensory or mental capacity or who do not have knowledge and experience, provided that they are supervised or they understand the instructions with regard to safe use of the product and potential dangers. Children should not play with the appliance.
- Cleaning and user maintenance procedures should not be performed by children unless they are supervised by an older person.
- Do not leave the appliance unattended while it is plugged in.
- Unplug the appliance before filling the water reservoir with water.
- Do not open the water refill hole during usage.
- Operate and store the appliance on a stable surface.
- When the appliance is placed on its base plate, ensure that the surface beneath the plate is level.
- Always put the appliance on its base plate when you are not using it or when you take a break when ironing.
- If the appliance is dropped, leaks water, has a damaged power cable or other failures, contact the authorised service. Do not use the appliance until it is repaired.
- When the appliance is in use or left to cool down, keep the appliance and power cable out of reach of children under 8 years old.
- The appliance is not suitable for outdoor use.
- Only use the original parts or parts recommended by the manufacturer.
- Use the appliance only when it is connected to the steam iron station.
- Do not attempt to dismantle the appliance.
- Your mains power supply should comply with the information supplied on the rating plate of the appliance.
- The mains supply of the appliance should be secured with a 16 A fuse minimum.

2 Important safety and environmental instructions

- Use the appliance with a grounded outlet.
- Do not use the appliance with an extension cable.
- Do not pull the power cable when unplugging the appliance.
- If the power cable is damaged, it should be repaired or replaced by the dealer, service center, or a specialised and authorised service with similar qualifications.
- Unplug the appliance before cleaning.
- Do not wrap the cable around the appliance.
- Do not touch the appliance or its plug with damp or wet hands when the appliance is plugged in.
- The soleplate of the appliance may get too hot. Contact with hot surfaces may cause burns.
- Never use the appliance in or near places where combustible or inflammable ambience or places are present.
- Make sure that the appliance has cooled down before opening the calc collector knob. After using the device, you must unplug the device and wait for about 2 hours before opening the cover of the appliance.
- If you keep the packaging materials, store them out of the reach of children.



WARNING: Do not soak the steam station (6) in water or other liquids. Never put vinegar, descaling agent, laundry starch, perfume or other auxiliary products that help ironing into the appliance.



WARNING: Do not use gasoline, solvent and abrasive cleaning agents or hard brush to clean the appliance.



WARNING: Do not wash your appliance under running water or do not soak it in water or other liquids.



WARNING: Do not use abrasive cleaning agents to clean the soleplate (11).



Operation of the pump may make some noise during the water drawing process; this is normal.



WARNING: Never direct the steam to people or pets.



WARNING: Do not allow the iron to contact with metal parts such as zippers and rivets. This may damage the soleplate of the iron.



WARNING: In the automatic shutdown mode, the product will not shut down if you press the on/off button (4) until you unplug it. The on/off button will start to flash in ten minutes and the product will switch to stand-by.

2 Important safety and environmental instructions



„SMART“ mode of your appliance is suitable for all types of fabrics that can be ironed.

2.2 Compliance with WEEE Directive and Disposing of the Waste Product



This product complies with EU WEEE Directive (2012/19/EU). This product bears a classification symbol for waste electrical and electronic equipment (WEEE). This product has been manufactured with high quality parts and materials which can be reused and are suitable for recycling. Do not dispose of the waste product with normal domestic and other wastes at the end of its service life. Take it to the collection center for the recycling of electrical and electronic equipment. Please consult your local authorities to learn about these collection centers.

2.3 Compliance with RoHS Directive

The product you have purchased complies with EU RoHS Directive (2011/65/EU). It does not contain harmful and prohibited materials specified in the Directive.

2.4 Package information



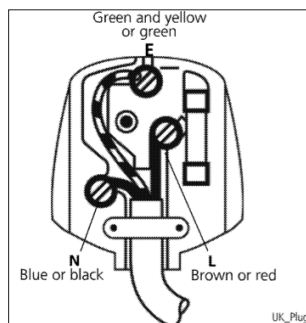
Packaging materials of the product are manufactured from recyclable materials in accordance with our National Environment Regulations. Do not dispose of the packaging materials together with the domestic or other wastes. Take them to the packaging material collection points designated by the local authorities.

2.5 Plug Wiring

The moulded plug on this appliance incorporates a 13 A fuse. Should the fuse need to be replaced an ASTA approved BS1362 fuse of the same rating must be used. Do not forget to refit the fuse cover. In the event of losing the fuse cover, the plug must not be used until a replacement fuse cover has been fitted. Colour of the replacement fuse cover must be the same colour as that visible on the pin face of the plug. Fuse covers are available from any good electrical store.

• Fitting a different plug

- As the colours of the wires in the mains lead of this appliance may not correspond with the coloured markings identifying the terminals on your plug, proceed as follows:
- Brown cable = L (Live)
- Blue cable = N (Neutral)
- Green/yellow cable must be connected to ground (E) \equiv line
- With the alternative plugs a 13 A fuse must be fitted either in the plug or adaptor or in the main fuse box. If in doubt contact a qualified electrician.



Intended use

This appliance is intended only for household use and ironing; it is not suitable for professional use.

Initial use

Prior to initial use, fill the water reservoir with water and evaporate the water twice in order to remove the manufacturing residues.



A light odour may arise during the initial use. This condition will return to normal after several uses.

Ironing tips

- The appliance gets heated in a short time; iron fabrics such as synthetic, silk etc. using low temperature settings.
- Iron fabrics that may luster (silk etc.) by turning them inside out or using the appliance in **“SMART”** mode.
- Use very little pressure when ironing fabrics such as velvet and iron them towards one single direction.
- Steam usage may cause stains on coloured silk fabrics. Do not use steam.
- 100% pure woolen clothes can be ironed by using steam.
- Ironing woolen clothes may cause luster. Iron by turning them inside out.

Temperature setting

Fabric Type	Temperature Setting	Steam Setting
Synthetic	•	Without steam
Silk	••	With Steam
Cotton	•••	With Steam
Linen - Jean	Max	With Steam

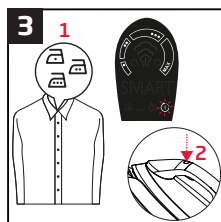
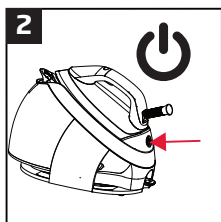
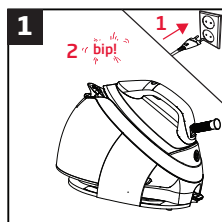
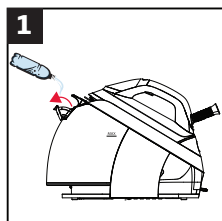
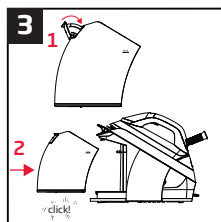
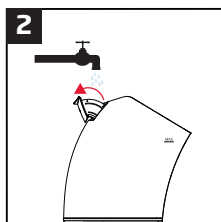
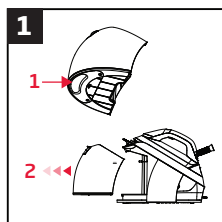
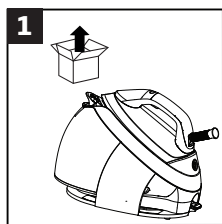
Storage

- If you do not intend to use the appliance for a long time, store it carefully.
- Unplug the appliance and wait for it to cool completely before storing it.
- Discharge the water in the water reservoir (5).
- Store it in a cool and dry place.
- Keep the appliance out of the reach of children.

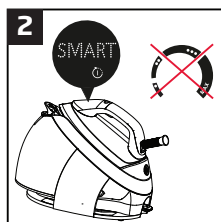
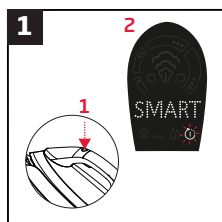
Moving and transportation

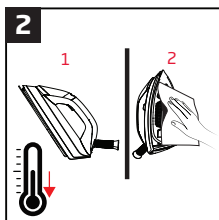
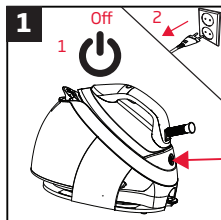
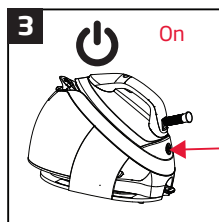
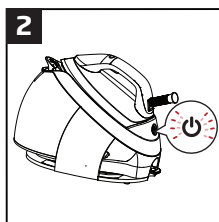
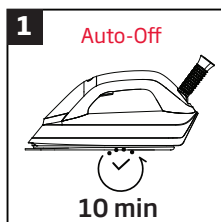
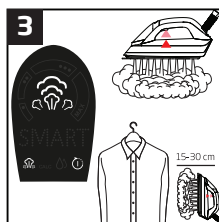
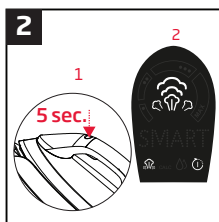
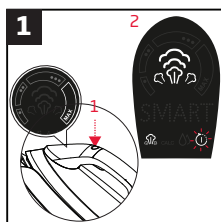
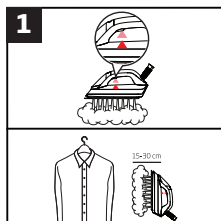
- Carry the appliance in its original packaging during moving and transportation. The packaging of the appliance protects it against physical damages.
- Do not place heavy loads on the appliance or the packaging. The appliance may be damaged.
- Dropping the appliance may render it non-operational or cause permanent damage.

The values which are declared in the markings affixed on your product or the other printed documents supplied with it represent the values which have been obtained in the laboratories pursuant to the pertinent standards. These values may vary according to the usage of the appliance and ambient conditions.

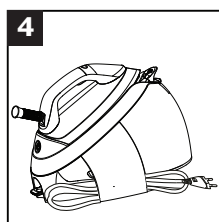
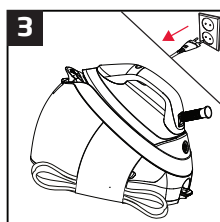
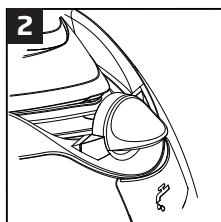
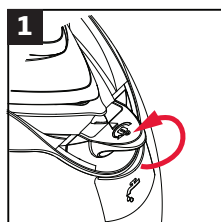
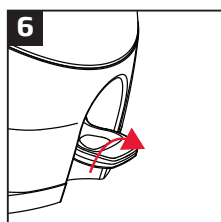
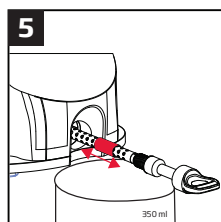
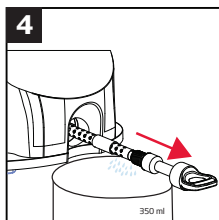
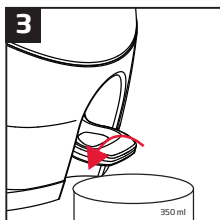
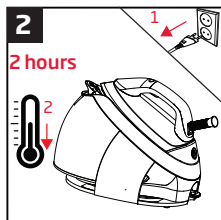
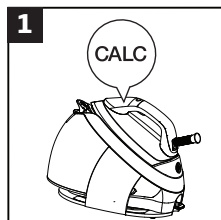


SMART





CALC



Product Guarantee

12 months breakdown and repair guarantee

Guarantor: **Beko plc, 1 Greenhill Crescent, Watford, Hertfordshire. WD18 8UF**

The guarantee does not in any way diminish your statutory or legal rights.

Your **appliance** has the benefit of our manufacturer's guarantee which covers the product for 12 months from the date of original purchase.

This gives you reassurance that if within that time, your **appliance** is proven to be defective because of either workmanship or materials, we will at our discretion either repair or replace your **appliance**.

The **appliance** must be correctly installed, located and operated in accordance with the instructions contained in the user manual. The guarantor disclaims any liability for accidental or consequential damage.

The Guarantee is subject to the following conditions:

- Documentary proof of the original purchase date is provided.
- The appliance has been installed and operated correctly and in accordance with our operating and maintenance instructions.
- The appliance is used only on the electricity supply on the rating plate.
- The appliance has only been used for normal domestic purposes.
- The appliance has not been altered, serviced, dismantled or otherwise interfered with by any person.
- The appliance is used in the United Kingdom or Republic of Ireland.
- Any parts removed during repair work or any product that has been replaced becomes our property.
- The guarantee is not transferrable if the product is resold.

The Guarantee does not cover:

- Transit, installation or delivery damage.
- Accidental damage.
- Misuse or abuse.
- Replacement of any consumable item or accessories. These include but are not limited to: plugs, cables, light bulbs, knobs, filters and flaps.
- Repairs or replacements required as a result of unauthorised repairs or inexperienced installation that fails to meet the requirements contained in the user guide or instruction book.
- Repairs to products used in commercial or non-residential household premises.

How to obtain after sales service, help or general advice

Please keep your purchase receipt or other proof of purchase in a safe place as you will need to show us this document if your product requires attention within the guarantee period.

Please also record your product details below, which will allow you to access our services more quickly and help us identify your product. The model number is printed on the front of the user guide and the serial and model number is shown on your products rating plate.

Model number	Serial number	Purchased from	Date of purchase

Please call our UK based Customer Service department if you need help or advice from us:

United Kingdom and Northern Ireland:

0333 207 9710

Republic of Ireland:

01 862 3411

You can also contact us through our website:

www.beko.co.uk

