



# Fully Automatic Espresso Machine With Integrated Milk Cup

User Manual



CEG 7404 C

EN



01M-8917953200-2824-01

You can download the  
HomeDirect application  
for free from the Apple App Store  
or Google Play Store to access  
the recipes.



## CONTENTS

ENGLISH

3-32

---

# Please read this user manual first!

Dear Customer,

Thank you for selecting this Beko product. We hope that you get the best results from your product, which has been manufactured to a high quality with state-of-the-art technology. Please read this entire user manual and all other accompanying documents carefully before using the product and keep them as a reference for future use. If you pass on the product to someone else, please give them the user manual as well. Please take into consideration all warnings and information in the user manual.

## Explanation of symbols

The following symbols are used in the various section of this manual:



Important information or useful hints about usage.



**DANGER:** This warning for dangerous situations with regard to life and property.



**WARNING:** This warning indicates potentially dangerous situations.



**CAUTION:** This warning indicates the potential for material damage.



Materials are suitable for food contact



RECYCLED &  
RECYCLABLE  
PAPER

# 1 Important instructions for safety and environment

This section includes the safety instructions that will help provide protection against risks of personal injury and material loss. Failure to follow these instructions invalidates any warranty.

## 1.1 Danger of electric current

Danger to life due to electric current!

Contact with live wires or components could lead to serious injury or even death!

Observe the following safety precautions to avoid electric shocks:

- Do not use the product if the power cable or the appliance itself is damaged. Contact the authorised service.
- Do not open the housing of the coffee machine. There is a risk of electric shock if live connections are touched and/or the electrical and mechanical configuration is changed.
- Before cleaning the bean container, unplug the appliance from the mains socket. Danger from the coffee grinder rotating!



# **1 Important instructions for safety and environment**

## **1.2 Danger of burning or scalding**

Parts of the coffee machine can become very hot during operation! Dispensed drinks and escaping steam are very hot!

Observe the following safety precautions to avoid burning/scalding yourself and/or others:

- Do not touch either of the metal sleeves on both coffee spouts.
- Avoid direct contact of the skin with steam escaping the machine or hot rinsing, cleaning or descaling water.

## **1.3 Basic safety precautions**

Observe the following safety precautions to ensure safe handling of the coffee machine:

- Never play with packaging material. There is a risk of suffocation. Keep all packaging materials away from children.
- Inspect the coffee machine for visible signs of damage before use. Do not use a damaged coffee

# 1 Important instructions for safety and environment

machine. Contact the authorised service.

- If the connecting cable is damaged, it should only be replaced by a service agent recommended by the manufacturer in order to prevent any danger! Please contact the manufacturer or their customer service.
- Repairs to the coffee machine must only be carried out by an authorised specialist or customer service representative. Repairs by unauthorized persons can lead to considerable danger for the user. These actions will also void the warranty.
- Repairs to the coffee machine during the warranty period may only be carried out by service centres authorised by the manufacturer, otherwise the warranty will become void in the event of subsequent damage.
- Defective parts may only be replaced with original spare parts. Only original spare parts guarantee that the safety requirements are met.
- This appliance can be used by children aged from 8 years and above if they have been given

# 1 Important instructions for safety and environment

supervision or instruction concerning use of the appliance in a safe way and if they understand the hazards involved. Cleaning and user maintenance shall not be made by children unless they are older than 8 and supervised. Keep the appliance and its cord out of reach of children aged less than 8 years.

- Appliances can be used by persons with reduced physical, sensory or mental capabilities or lack of experience and knowledge if they have been given supervision or instruction concerning use of the appliance in a safe way and understand the hazards involved.
- Children shall not play with the appliance
- Cleaning and user maintenance shall not be made by children without supervision.
- This appliance is intended to be used in household and similar applications such as:
  - staff kitchen areas in shops, offices and other working environments,
  - farm houses,

# 1 Important instructions for safety and environment

- by customers in hotels, motels and other residential type environments,
- bed and breakfast type environments.
- Protect the coffee machine against the effects of weather such as rain, frost and direct sunlight. Do not use the coffee machine outdoors.
- Never immerse the coffee machine itself, the mains cable or the mains plug in water or other liquids.
- Do not clean the coffee machine or accessories in a dishwasher.
- Do not pour any liquids other than water or place foodstuffs into the water tank.
- Do not fill the water tank beyond the maximum mark.
- Only operate the machine when the waste container, drip tray and the cup tray are fitted.
- Do not pull the cable to remove the plug from the mains socket or touch with wet hands.
- Do not hold the coffee machine by the mains

# 1 Important instructions for safety and environment

cable.

- Keep the appliance and its cord out of reach of children aged 8 or under.
- The appliance can only be used to prepare coffee.
- Children should be supervised to ensure that they do not play with the appliance.
- Unplug the appliance before each clean and when the appliance is not in use.
- Place the appliance in a way that the plug is always accessible.
- Always use the appliance on a stable, flat, clean, dry and non-slip surface.
- The appliance is not an integrated coffee machine and is not designed use inside a cabinet. The coffee maker shall not be place in a cabinet while in use.
- Do not squeeze or bend the power cord and do not rub it on sharp edges in order to prevent any damage to the power cord. Keep the power cord away from hot surfaces and naked flames.

# 1 Important instructions for safety and environment

- Ensure that the mains power supply complies with the information supplied on the rating plate of the appliance.
- Use the appliance only with a grounded socket.
- Do not use the appliance with an extension cord.
- Do not touch the appliance or its plug with wet or damp hands when the appliance is plugged in.
- CAUTION: In order to avoid a hazard due to inadvertent resetting of the thermal cut-out, this appliance must not be supplied through an external switching device, such as a timer, or connected to a circuit that is regularly switched on and off by the utility.
- Warning: avoid spillage on the connector.
- Do not misuse the appliance to avoid potential injury.
- If the supply cord is damaged, it must be replaced by the manufacturer or its agent or similarly qualified person in order to avoid hazard.
- Cleaning: Do not use harsh, abrasive cleaners. See

# 1 Important instructions for safety and environment

for the 6.1 to 6.4 detailed cleaning instructions.

- The heating element surface is subject to residual heat after use.

## 1.4 Intended use

The Beko fully automatic coffee machine is intended for use in homes and similar applications, such as in staff kitchens, shops, offices and similar areas or by customers in bed & breakfast, hotels, motels and other living accommodation. This coffee machine is not intended for commercial use. The machine is only intended for preparing coffee and heating milk and water. Any other use other than previously stated is considered as improper use.

### Danger resulting from improper use!

If the coffee machine is not used for its intended purpose, it may become a source of danger.



- Consequently, the coffee machine must only be used for its intended purpose.
- Follow the procedures described in this user manual.

No claims of any kind will be accepted for damage or injury resulting from the use of the coffee machine for purposes other than its intended use.  
The risk must have been borne solely by the machine owner.

## 1.5 Limitation of liability

All technical information, data and instructions on installation, operation and maintenance of the coffee machine contained in these operating instructions represent the current status at the time of printing and are based on the best possible knowledge gained by experience and knowhow.

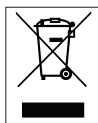
No claims/demands can be inferred from the information, illustrations and explanations in this user manual.

# 1 Important instructions for safety and environment

The manufacturer assumes no liability for damage or injury resulting from failure to observe the user manual, use of the product for purposes other than the intended use, unprofessional repairs, unauthorised modifications or use of non-approved spare parts.

## 1.6 Compliance with the WEEE Directive and Disposing of the Waste Product:

This product complies with EU WEEE Directive (2012/19/EU). This product bears a classification symbol for waste electrical and electronic equipment (WEEE).



This symbol indicates that this product shall not be disposed with other household waste at the end of its service life. The used device must be returned to an official collection point for the recycling of electrical and electronic devices. To find these collection points, please contact your local authority or retailer where the product was purchased. Each household performs an important role in the restoring and recycling of old appliances. The appropriate disposal of used appliance helps prevent potential negative consequences for the environment and human health.

## 1.7 Compliance with RoHS Directive

The product you have purchased complies with EU RoHS Directive (2011/65/EU). It does not contain harmful and prohibited materials specified in the Directive.

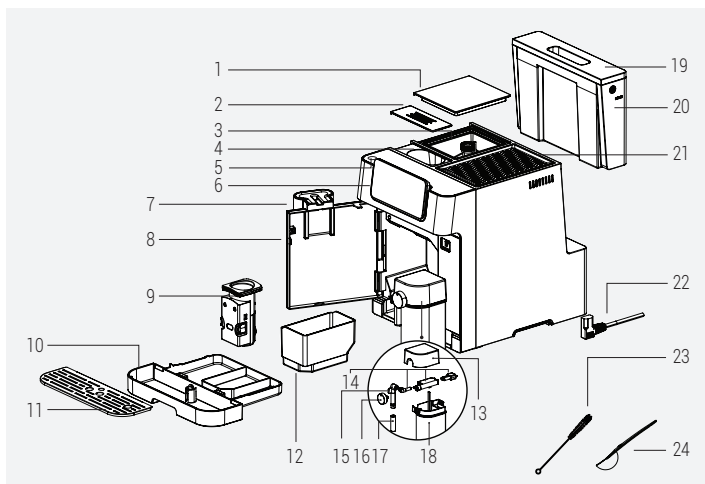
## 1.8 Package information



The packaging materials of the product were manufactured from recyclable materials in accordance with our National Environment Regulations. Do not dispose of the packaging materials together with domestic or other waste. Take them to the packaging materials collection points designated by local authorities.



## 2 Your Fully Automatic Espresso Machine



- |  |                                   |
|--|-----------------------------------|
| 1. Coffee Bean Container Cover         | 13. Milk Cup Cover                |
| 2. Pre-ground Coffee Chute Cover       | 14. Milk Cup Assembly Parts       |
| 3. Coffee Bean Container               | 15. Milk Cup Nozzle Internal Part |
| 4. Pre-ground Coffee Chute             | 16. Milk Foam Adjustment Knob     |
| 5. Power On/Off Button                 | 17. Milk Cup Nozzle               |
| 6. Digital Control Panel               | 18. Milk Cup                      |
| 7. Adjustable Coffee Spout             | 19. Water Tank Cover              |
| 8. Front Cover                         | 20. Water Tank                    |
| 9. Brewing Unit                        | 21. Cup Holder                    |
| 10. Drip Tray                          | 22. Power Cord                    |
| 11. Cup Tray                           | 23. Cleaning Brush                |
| 12. Coffee Ground (Residual) Container | 24. Pre-ground Coffee Spoon       |

## 2 Your Fully Automatic Espresso Machine

### Technical data

#### Power supply:

220-240 V~, 50-60 Hz

#### Power: 1350 W

The right to make technical and design changes is reserved.

All declared values on the product and on the printed leaflets were obtained from laboratory measurements performed according to the relevant standards. These values may differ depending on usage and ambient conditions.

#### Product Dimensions:

27,5 cm (Width) x 35,9 cm (Height) x 41,2 cm (Depth)

**Weight:** 9.68±0.5kg

**Cable Length:** 95±5 cm

#### Ground Coffee Weight (Bean Mode)

**Standard:** 9±2g

**Intense:** 11±2g

**Drip Tray Capacity:** Up to 0.5 L

**Coffee Ground (residual) Container**

**Capacity:** Up to 10 cups

**Milk Cup Capacity:** Up to 0.6L

**Water Tank Capacity:** 2.0±5%L

**Coffee Bean Container Capacity:**

250±5%g

**Machine Pre-heating time:** <50s

**Volume of coffee (Default settings):**

Espresso: 30±10ml

Double: 60±10ml

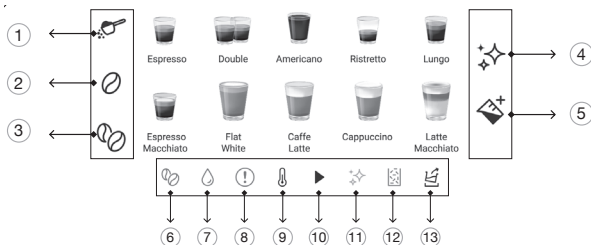
Americano: 150±20ml

Ristretto: 20±5ml

Lungo: 60±10ml

## 3 Display

### 3.1 Control Panel



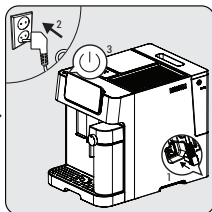
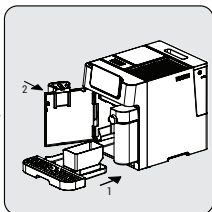
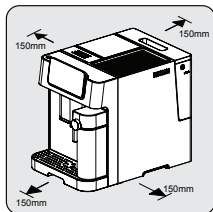
1		Used for selecting <b>"Ground Coffee"</b> option.
2		Used for selecting <b>"Standard Bean Coffee"</b> option.
3		Used for selecting <b>"Intense Bean Coffee"</b> option.
4		Used for initiating cleaning and descaling functions.
5		Milk Button
6		No Coffee Bean Error
7		No Water Error
8		General Error
9		Lit During Pre-Heating
10		Lit During Ongoing Process
11		Descale Warning
12		Residual Container Full Error
13		Water Emptying Indicator

## 4 Preparation

### 4.1 Installation



Remove any protective films, stickers and any other packaging material from the appliance.



Choose a safe and stable surface with an easily reachable power supply and allow the minimum distance from the sides of the machines.

Insert the drip tray. Make sure it is inserted correctly and close the front cover.

Unwind and straighten the power cord and insert the plug into the socket located under the machine. Insert the other end of the power cord into a wall socket with the suitable power voltage. Press the on/off button to turn on the machine.

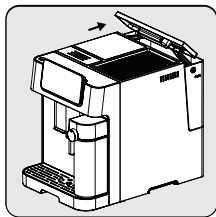
### 4.2 Filling the water tank



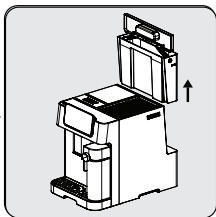
**About the protect program:** If the water tank is not fully placed into the machine, a protection mode will be activated 15 seconds into the brewing process. The hot water button will light up on the control panel.

1. Make sure that the water tank is fully inserted into the machine.

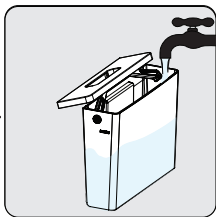
## 4 Preparation



Lift the water tank by using the lid as the handle.



Take the water tank out.



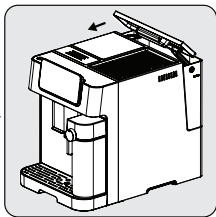
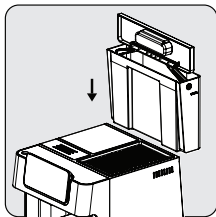
Rinse the water tank with fresh water and then fill the tank to the Max level and place it back into the machine. Make sure it is fully inserted.



To prevent water overflowing from the water tank, do not add water directly into the appliance from another container.



- Never fill the water tank with warm or hot water, sparkling water or any other liquid that might damage the water tank and the machine.
- When "💧" is lit, the water tank is at a low water level and requires filling.



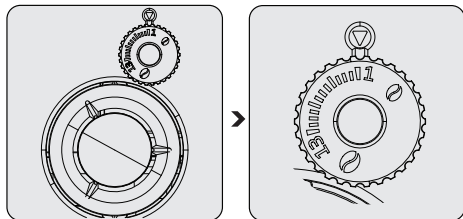
## 5 Operation

Place the water tank back in by using the lid as the handle.

Close the water tank by using the lid.

### 5.1 Grinding Adjustment

You can adjust the grinding coarseness by turning the adjustment knob on the bean container:



Never do the grinding adjustment when the grinder is not operating. It may damage the grinder.



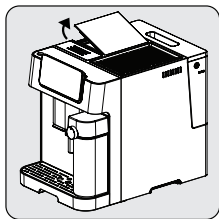
The lines on the adjustment knob indicate the coarseness of the grind. Bigger number means coarser grind level.

### 5.2 Filling the bean containers

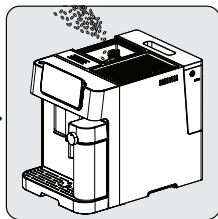


- When "☕" is flashing, the appliance needs to be filled with coffee beans.
- Storing bean in its original vacuum pack is better to ensure longer lasting freshness. Do not use the coffee bean container for storage purposes for better results.

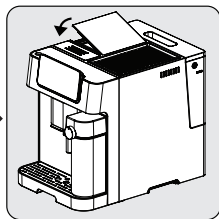
## 5 Operation



Remove the bean container lid.

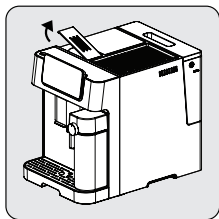


Slowly pour in the coffee beans.

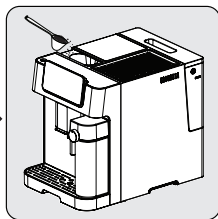


Place the container lid back on.

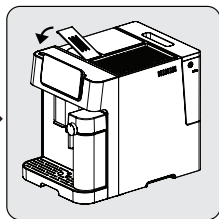
### 5.3 Using the pre-ground coffee container



Remove the pre-ground coffee chute lid.



Slowly put the pre-ground coffee in the pre-ground coffee chute.



Place the chute lid back on.



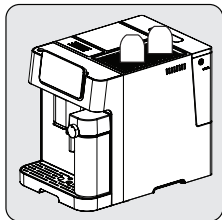
Pre-ground coffee chute is not a storage unit, it offers a one-time usage (max 13g). Measurement spoon accessory can be used for suggested amount of ground coffee.



- Ground coffee button should be pressed and selected from the screen in order to activate this setting.
- Store your espresso grounds in an airtight container, and in a cool, dry place to retain the flavor. Grounds should not be kept for long periods of time as the flavor will be reduced.

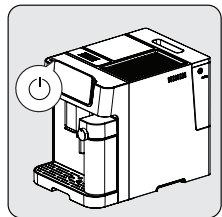
## 5 Operation

### 5.4 Using the Cup Warmer



Cups should be placed upside down to ensure internal surface is kept warm and clean (This function uses the internal heat of the machine).

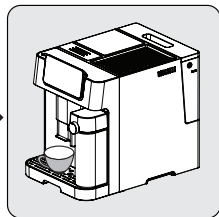
### 5.5 Preparing Your Coffee



Switch on the appliance by pressing the power on/off button. The appliance turns on, starts pre-heating and auto-cleaning. It is ready for use in idle mode in which all icons are lit.



Place a cup under the coffee spout and adjust the height of the spout according to the cup.



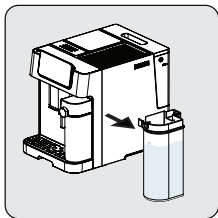
Select your coffee by pressing button and the cup lighter will turn on indicating that the appliance is preparing a cup of coffee. When the appliance returns to idle, the coffee is ready to serve.



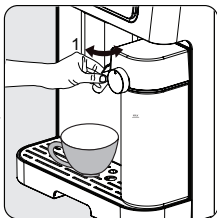
## 5 Operation

### 5.5.1 Preparing Coffee with Milk

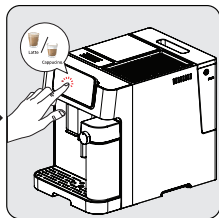
Espresso Macchiato, Flat White, Caffè Latte, Cappuccino or Latte Macchiato are combinations of espresso with different amounts of hot milk and milk froth.



Hold the milk cup with one hand. Remove the cover of the milk cup. Add milk to the milk cup. The milk amount should not exceed the max level. The recommended temperature for milk is 4-8 °C (~ 40-46 °F). Close the cover of milk cup.



Attach the milk cup to the appliance, it must click audibly into place. Make sure that the milk cup fits correctly. Adjust the angle of the milk cup nozzle over the cup. Adjust the milk foam density with the help of milk foam adjustment knob based on your preferences.



Select your coffee with milk by pressing button and the cup lighter will turn on indicating that the appliance is preparing a cup of coffee. When the appliance returns to idle, the coffee is ready to serve.

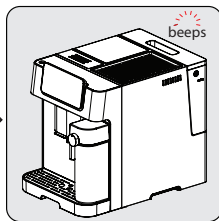
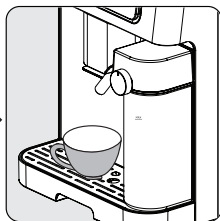
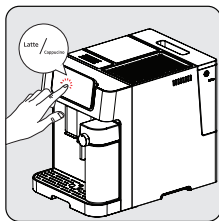


- To ensure your espresso stays at optimum temperature, we recommend that you preheat your cups.
- In addition to the coffee used, using fresh cold water that is free of chlorine, odors and other impurities will help ensure the perfect espresso.



This machine allows the user to set the foam ratio by turning the knob from Max to Min to enjoy the desired foam. Suggested setting for Latte is min-mid, Cappuccino is mid-max. Adjust the milk foam density based on your preferences.

## 5 Operation



Press the button of preferred coffee. Then one beep sound will be heard. The selected beverage's button will start blinky and brewing will start.

The pump will work intermittently as the milk froth first enters your cup. After the milk froth is ready, the device automatically starts to brew the coffee.

When the unit beeps once, the beverages is ready enjoy!  
- The machine will revert to idle mode.

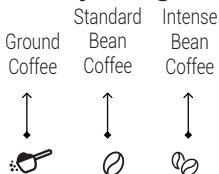


Always make sure the milk cup is placed correctly. If not fitted well, the Espresso Macchiato, Flat White, Caffè Latte, Cappuccino, Latte Macchiato and milk button will light off and the functions will not be available. Buzzer will sound as 3 beeps to indicate this.



The removal of the milk cup has no impact on the coffee brewing, Double Espresso, Americano, Ristretto and Lungo programs can be used.

### 5.6 Adjusting The Strength of Your Coffee

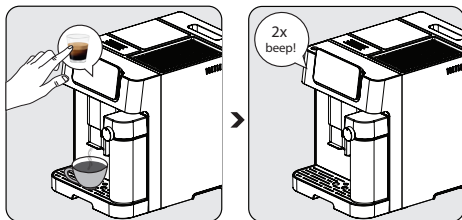


If bean coffee is being used press the "standart bean" or "intense bean" button to adjust the strength of your beverage. If ground coffee is being used, press the "ground coffee" option.

## 5 Operation

### 5.7 Adjusting The Volume of Your Coffee / Milk

You can save the volume of your desired coffee for all beverages types as well as milk foam (25ml to 250ml coffee [x2 for double] & 10 ml to 500 ml milk)



While making coffee, select the function that is to be reprogrammed. Press the appropriate button during related operation (coffee adjustment during coffee dispensing, milk adjustment during milk dispensing and keep it held down. You will hear one beep.

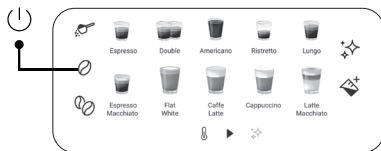
Only let go off the button once the desired amount of coffee or milk have passed through. You will hear two beeps. This time is now saved under the corresponding function.



Adjustment can be made during ongoing beverage preparation (after grinding is completed).

## 5 Operation

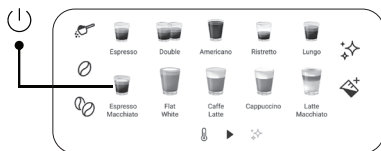
### To reset all beverages to default/factory settings;



In order to reset to the default settings of all beverage and milk foam volume selection saved to memory;

- Press power on/off button and bean button all together for 3 seconds.

### To reset single beverage to default/factory settings;



In order to reset to the default settings of any coffee or milk foam volume individually;

- Press power on/off button and beverage button (which is desired to be reset) all together for 3 seconds.

## 5.8 Milk Foam

The appliance can dispense hot milk by simply pressing the milk button "". Press again to stop.



This function can be used only to output hot milk. Different flavors can be created by adding different ingredients to the prepared hot milk.

## 5.9 Mode Selection

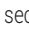

The machine has three different settings: the default setting, ECO mode and speed mode. In ECO mode, the appliance saves more energy. In speed mode, the user can make their coffee faster than when in the default settings.

## 5 Operation

	ECO Mode	Speed Mode	Default Settings
Cup Lighter	Off	On	On
Pre-brewing*	Yes	No	Yes
Auto-shut off time	10mins	30mins	20mins



The pre-brewing function moistens the coffee inside the brewing unit with a small amount of water before full extraction. This expands the coffee grounds to build up greater pressure in the brewer, which helps extract all the oils and bring out the full flavour of the beans.

1. When the machine is on idle, press and hold the  for 5 seconds.
2. The  will then flash and the following buttons will light up to indicate different settings:

In ECO Mode




In Speed Mode

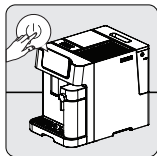


In Default Settings



3. Press the "Powder Coffee Button" for ECO mode, the "Standart Bean Coffee Button" for Speed Mode and the "Intense Bean Coffee Button" for Default settings. You'll hear two beeps when the mode has been selected.
4. If you would like the setting to remain unchanged, press  again or wait for 5 seconds for the machine to return to idle mode.

### 5.10 Cancelling



On-off button should be pressed once to cancel any running process. Additionally, pressing over a selected beverage once again after preparation started will also cancel the operation.



Pressing the on/off button 2 times will force-shut down the device.

## 6 Cleaning

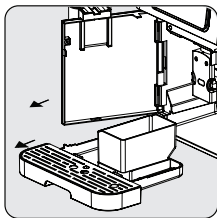
### 6.1 Cleaning the appliance

1. Disconnect the power cord from the mains supply outlet.
2. Pour away all the water/coffee residual inside the drip tray and coffee residual container.
3. Use a damp cloth or non-scratching cleaning agent to clean the liquid stains on the appliance.

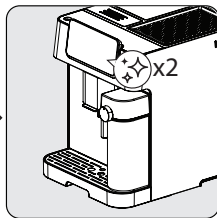


Never use any abrasive, vinegar or descaling agents not included in the box to clean the appliance.

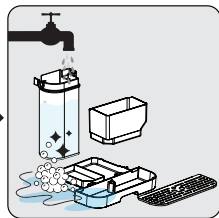
Timely cleaning and maintenance of the appliance is highly important in prolonging its life.



Open the front cover. Remove the drip tray and the coffee residual container.




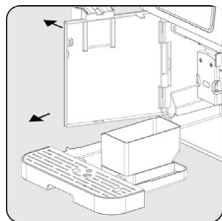
To automatically clean the milk cup, press the cleaning/descaling button "★x2" twice. Once completed, take out the milk cup and milk cup assembly parts. Clean them under clean water. Dry them afterwards.



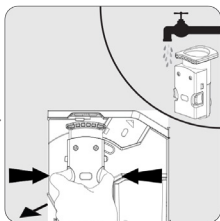
Empty the coffee residual container, the drip tray. Wash coffee residual container, drip tray and milk cup with warm running water and use the needle or the bristles of the brush if needed in any parts to clean. Dry them afterwards.

## 6 Cleaning

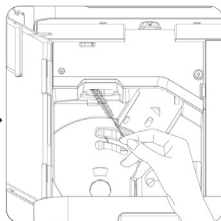
**i** When  lights up, the coffee residual container needs to be emptied. This icon will light up after every 10 coffee brews. Clean the container to fix the error. If the container is clean, remove the container and put it back in its place.



Hold the adjustable coffee spout and pull back slowly to open the front cover.





Remove the brewing unit. Wash with water and dry afterwards.



Clean the coffee outlet line with brush.

- i**
- The drip tray should be emptied when the floating indicator is visible.
  - Powder coffee funnel should be cleaned after each use with the cleaning brush.

**i** When  lights up, it indicates that the brewing unit is missing / incorrectly installed.  
When  is flashing, it indicates that the front cover is not closed.

### 6.2 Descaling Function



- Descale is required after predefined brewing cycle.
- Do not use vinegar or other cleaning agents for the self-cleaning of this appliance. Other cleaning agents may damage the appliance.
- Keep the skin/body away from hot water.

## 6 Cleaning

When ✨ lights up, it indicates that the appliance needs to undergo descaling. The appliance will remain in the best condition if this function is performed at least once a month or more regularly depending on the hardness of water used.

### To start descaling:

1. Fill the water tank until "Descaling Level ✨".
2. Add one pack of cleaning agent included in the box to the water tank.
3. Place a sufficiently large container under the coffee spout and nozzle.
4. When on idle, press and hold ✨ for 3 seconds. You'll hear a beep and the ✨ will flash until water tank is empty.
5. Fill the water tank once again until "descale level" with water, and press the ✨ button once again to start the second cycle of descaling. If the water tank is removed and placed back, the appliance will detect this action and automatically start the second cycle (without pressing ✨ again).
6. Once the water tank is emptied, the screen will go back to idle condition. Descaling is completed. Fill the water tank with fresh water to start preparing coffee.

### To reset descale warning status;



In order to reset descale warning status;

Press power on/off button and descale button all together for 3 seconds.



Resetting descaling warning status is not suggested for maintaining the best condition of the appliance.



## 6 Cleaning

### 6.3 Empty System Function

Use the empty system function before a long period of non-use and for frost protection.

1. When on idle, press and hold the "☺" and the milk button "🥛" together for 3 seconds.
2. 📺 will then light up.
3. Remove the water tank from the appliance, process will start automatically.
4. When the empty system function is completed, the appliance will switch off automatically.



When the appliance is reused again for the first time after empty system function is used; press the milk button until water comes out of the spout.

### 6.4 Manual Cleaning / Rinsing Function

You can manually clean / rinse the coffee nozzle before or after use. When in idle, press ✨ once.

- After cleaning / rinsing, the appliance will return to idle.



- The water that comes out of the coffee nozzle is hot and is collected in the drip tray underneath. Avoid contact as it splashes around.
- If the appliance has not been used for a long period of time, this function is suggested to be used.



Using this function before coffee preparation will also ensure hotter coffee.

## 6 Cleaning

### Deactivating the auto-clean mode

Your appliance cleans itself automatically before and after each brewing operation. You may follow the steps below to deactivate the auto-clean mode.

- Turn on the appliance by pressing the power on/off button and wait until it goes into idle mode.
- Open the front cover.
- Press the power on/off button for 5 seconds and a beep will sound.
- Close the front cover.
- The auto-clean operation has been cancelled.

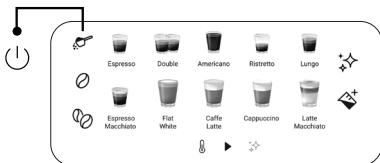


We recommend that you use the auto-clean mode actively for healthy use.

### To cancel auto-clean for once;

Press on/off button while machine is turning on or off to bypass this function.

### To mute the device sounds;



Press the power on/off button and ground coffee button all together for 3 seconds. simply do the same to turn back on.

## 7 Troubleshooting

Problem	Cause	Solution
The appliance does not work.	The appliance is not connected to the mains.	Plug in and press the switch. Check the cable and the plug.
No or delayed response in several attempts of pressing a function key on the panel	Appliance is under electromagnetic interference. The panel is dirty.	Unplug the appliance. Restart after a few minutes. Clean the panel with the cloth provided.
The coffee is not hot enough.	The cups have not been preheated. The brewing unit is too cold.	Place your cup on the cup warmer facing down or rinse the cup with hot water. Make sure that the water in the water tank is not too cold.
Coffee is not coming out of the coffee spout.	The empty system function may have been used previously. The coffee spout may not have been cleaned and is blocked by coffee residues.	Press the cleaning button until water comes out of the spout. Clean the coffee spout.
The first cup of coffee is of poor quality.	The first running of the grinder does not place a sufficient quantity of coffee into the brewing unit.	Throw the coffee away. The next cups will be better.
The water tank is removed / the water level is very low in the water tank but there is no "💧" alert.	The area near the water tank connector could be wet.	Wipe off the water around the water tank connector.
The internal drip tray is filled with a lot of water.	The ground coffee is too fine, which blocks the water from coming out.	Adjust the coffee fineness to larger grains for the grinding process.

## 7 Troubleshooting

Problem	Cause	Solution
Coffee is delivered too slowly or a drop at a time.	Coffee grounds are too fine, which blocks the water from coming out.	Adjust the coffee fineness to larger grains for the grinding process.
The indicator flashes to inform that there's not enough coffee beans, but there are plenty inside the container.	The internal coffee grounds outlet is blocked.	Follow the steps described for cleaning the coffee grounds outlet.
The brewer or the coffee ground tray is impossible to remove.	The appliance did not finish the self-cleaning process and was switched off .	Please switch on the machine again and let it finish its auto cleaning process.
The appliance no longer performs the rinsing cycle when switched on or off.	Improper handling when servicing the appliance may be the cause.	<ol style="list-style-type: none"><li>1. When the appliance is in idle condition, open the front cover.</li><li>2. Press and hold the on/off button until you hear 2 beeps.</li><li>3. Close the front cover.</li></ol>
The touch buttons are not sensitive.	Not pressing the touch button from the front of the appliance.	Press the lower bottom part of the symbol of the touch button from the front of the appliance.

Arçelik A.Ş.  
Karaağaç Cad. No: 2-6, 34445,  
Sütlüce, İstanbul, Türkiye

[www.beko.com](http://www.beko.com)