

beko

Table Blender

User Manual



TBN 30848 X

EN

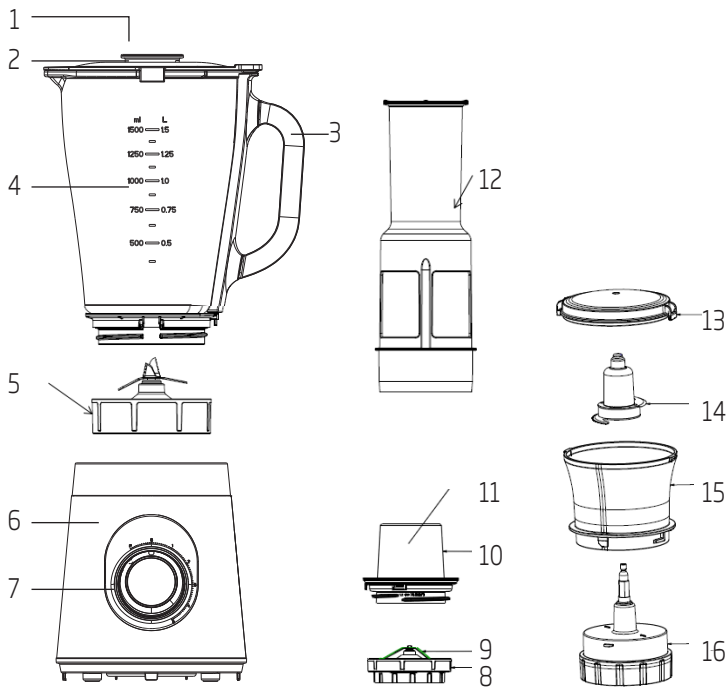


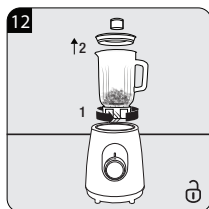
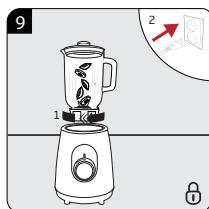
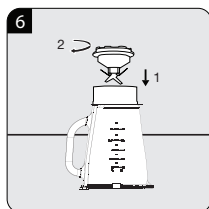
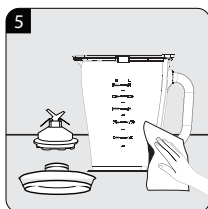
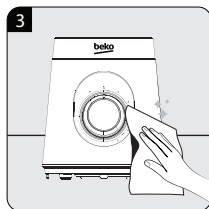
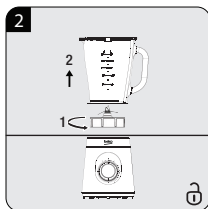
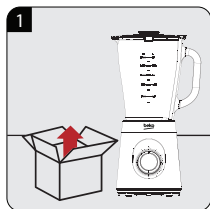
01M-8819443200-2820-01

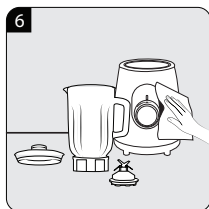
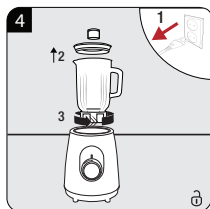
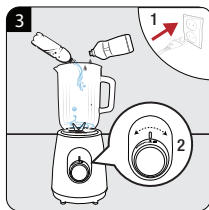
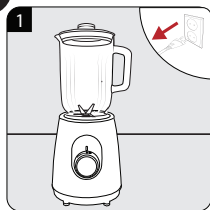
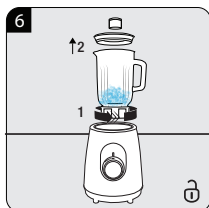
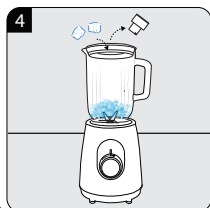
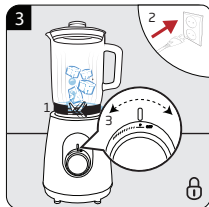
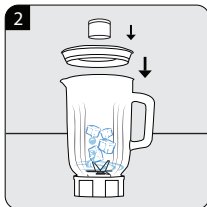
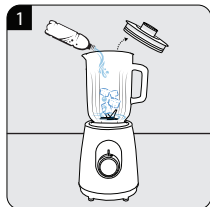
CONTENTS



ENGLISH

9-17







		
EN	OPERATION	CLEANING AND CARE

Please read this user manual first!

Dear Customers,

Thank you for selecting an Beko product. We hope that you get the best results from your product which has been manufactured with high quality and state-of-the-art technology. Therefore, please read this entire user manual and all other accompanying documents carefully before using the product and keep it as a reference for future use. If you handover the product to someone else, give the user manual as well. Follow all warnings and information in the user manual.

Meanings of the symbols

Following symbols are used in the various section of this manual:



Important information and useful hints about usage.



WARNING: Warnings for dangerous situations concerning the safety of life and property.



Materials are intended to be in contact with food.



Do not immerse the appliance, power cord or power plug in water or in other liquids.



Protection class against electric shock.



This product has been produced in environmentally-friendly, state-of-the-art facilities.

Complies with the WEEE Directive.

It does not contain PCB.

1. Measuring cup
2. Lid
3. Handle
4. Jar
5. Blender assembly
6. Motor unit
7. Speed knob
8. Blade base
9. Grinding blade
10. Grinding cup
11. Grinder attachment
12. Fruit filter
13. Bowl lid
14. Blade assembly
15. Chopper bowl
16. Chopper bowl base

Technical data

Voltage: 230 V~, 60 Hz

Power: 800 W

Technical and design modifications reserved

The values which are declared in the markings affixed on your product or the other printed documents supplied with it represent the values which were obtained in the laboratories pursuant to the pertinent standards. These values may vary according to the usage of the appliance and ambient conditions.

1 Important safety and environmental instructions

This section contains safety instructions that will help protect from risk of personal injury or property damage.

Failure to follow these instructions invalidates the granted warranty.

1.1 General safety

- This appliance complies with the international safety standards.
- "This product should not be used by persons with physical, sensory and mental disabilities, without sufficient knowledge and experience or by children. The device can only be used by such persons under supervision and instruction of a person responsible for their safety. Children should not be allowed to play with this device. • Children shall not play with the appliance. Cleaning and user maintenance shall not be made by children unless they are older than 8 and supervised."
- Do not use it if the power cable, blades or the appliance itself is damaged. Contact an authorised service.
- Only use the original parts or parts recommended by the manufacturer.
- Do not attempt to dismantle the appliance.

1 Important safety and environmental instructions

- Do not operate or place any part of this appliance or its parts on or near hot surfaces.
- Keep hands and utensils out of container while blending to reduce the risk of severe injury to persons or damage to the blender. A scraper may be used but must be used only when the blender is not running.
- To reduce the risk of injury, never place blade assembly on motor unit without the jar properly attached.
- Be careful if hot liquid is poured into the food processor or blender as it can be ejected out of the appliance due to a sudden steaming.
- Do not use the device for hot food.
- Your mains power supply should comply with the information supplied on the rating plate of the appliance.
- Do not use the appliance with an extension cord.
- Do not touch the plug of the appliance with damp or wet hands.
- Do not pull the power cable when unplugging the appliance.
- Unplug the appliance before cleaning, disassembly, accessory replacement and wait for it to stop completely.
- When emptying the container, during cleaning and grabbing chopping blades with bare hands serious

1 Important safety and environmental instructions

injuries could result due to incorrect use. Use the plastic section trying to hold the chopping blade.

- Never touch blades while using the appliance. There is the possibility of injury due to incorrect usage.
- After cleaning, dry the appliance and all parts before connecting it to mains supply and before attaching the parts.
- Do not immerse the appliance, power cable, or power plug in water or any other liquids.
- If you keep the packaging materials, store them out of the reach of children.
- Children shall not use the appliance. Keep the appliance out of the reach of children.
- This appliance is intended to be used in household and similar applications such as:
 - Staff kitchen areas in shops, offices and other working environments;
 - Farm houses
 - By clients in hotels, and other residential type environments;
 - Bed and Breakfast type environments.
 - It is not fit for industrial use.
- Do not squeeze or bend the power cord and do not rub

1 Important safety and environmental instructions

it on sharp edges in order to prevent any damage. Keep the power cord away from hot surfaces and naked flame

1.2 Compliance with the WEEE Directive and Disposing of the Waste Product:

This product complies with EU WEEE Directive (2012/19/EU). This product bears a classification symbol for waste electrical and electronic equipment (WEEE).



This symbol indicates that this product shall not be disposed with other household wastes at the end of its service life. Used device must be returned to official collection point for recycling of electrical and electronic devices. To find these collection systems please contact to your local authorities or retailer where the product was purchased.

Each household performs important role in recovering and recycling of old appliance. Appropriate disposal of used appliance helps prevent potential negative consequences for the environment and human health.

1.3 Compliance with RoHS Directive

The product you have purchased complies with EU RoHS Directive (2011/65/EU). It does not contain harmful and prohibited materials specified in the Directive.

1.4 Package information



Packaging materials of the product are manufactured from recyclable materials in accordance with our National Environment Regulations. Do not dispose of the packaging materials together with the domestic or other wastes. Take them to the packaging material collection points designated by the local authorities.

2 Operation

2.1 Intended use

This appliance is intended only for household use; it is not suitable for professional use. It is designed to chop small amounts of solid foods (onions, potatoes, carrots, etc.) and fruit (strawberries, bananas, etc.).

2.2 Operation



WARNING:

- Never use boiling liquids or run the appliance empty.
- When crushing ice or hard food, keep one hand firmly on the lid.



- Peeled or cored the fruit or vegetables and then cut it into small dices.
- Place the food to be blended into the jar. Usually, certain amount of purified water has to be added to facilitate the smooth running of appliance. The proportion of the food and water is 2:3. The amount of mixture should not exceed the max level as indicated on the jar.
- If you want to add ingredients while the blender is working, remove the measuring cup and place through the lid opening.
- When the consistence you desire is obtained, turn the knob to 0 position.

2 Operation



WARNING:

- For each use, the consecutive operation time should not exceed 3 minutes. at least 10 minutes rest time must be maintained between two continuous cycles, let the unit cool to room temperature before performing next operation cycle.
- If you want to stop the machine during operation, turn the knob to 0 position anytime.

2.3 Position "P"

Operating the appliance with the speed adjustment button in (7) position "P" for 1-2 seconds is called "PULSE".

Hold speed adjustment button (7) in position "P" for mixing with high speed short pulses. When you release the button, speed adjustment button (7) returns to "OFF" position automatically and the appliance starts stopping.

2.4 Important operating tips

Fill the grinding bowl with proper bean (such as coffee bean), then assemble the grinding blade assembly and grinding bowl together.



WARNING:

The quantity of bean to be allowed to grind by the grinding bowl is Max 35g, and the finished time is about 30s.

2 Operation

Then place the prepared chopping food into the bowl. The food must be cut into small size firstly (such as 2cm*2cm*6cm for beef).



WARNING:

The appliance allows you to chop the maximum quantity of beef or meat is 150g. Select the highest speed and operate for 40S.

- For best circulation of food that are to be blended with some liquid, pour the liquid into the jar first, then add solids.
- Some of the tasks that cannot be performed efficiently with a blender are: beating egg whites, whipping cream, mashing potatoes, grinding meat, mixing dough, extracting juice from fruit and vegetable
- The following items should never be placed in the unit as they may cause damage: bones, large pieces of solid, frozen food, or tough foods such as turnips.
- To crush ice, add up to 6 ice cubes. If more ice is needed, remove the cup and add cubes one by one through the lid opening.

2.5 Recipe

In order to obtain a good chopping performance, the amount of food put into the chamber and the size of the food should be selected appropriately. Below is an example for carrots and similar vegetables. It can vary between food types, it is recommended to properly place the food in the chamber.

FOOD TYPE	FOOD TYPE	WEIGHT	SPEED
Carrot (apple, pear etc.)	Cut into 5mm*15mm*15mm	Carrot: 600g Water: 900g	High speed

3 Cleaning and care

3.1 Cleaning



Rinse the measure cup, lid, seal ring 1, jar, seal ring 2 and blade assembly by hands or in a dishwasher and then dry. They are dishwasher safe components, but the temperature setting shall not exceed 70°C.



WARNING:

- Do not immerse the body in water. You can wipe it with a damp cloth.
- Chopping blade is sharp. Do not hold the sharp edge or immerse in water while cleaning.
- Always wash immediately after use for easier cleaning. Don't let food dry on the jar assembly as this will make cleaning difficult.
- Pour a little warm soapy water into the jar and turn the knob to P position for a few seconds. And then empty the jar.



WARNING:

- Do not immerse the motor unit in liquid to prevent the risk of electric shock.
- Do not use rough scouring pads or cleansers on parts or finish.

3 Cleaning and care

3.2 Storage

- If you do not intend to use the appliance for a long time, store it carefully.
- Unplug the appliance before lifting it.
- Store the appliance in a cool and dry place.
- Keep the appliance and cable out of the reach of children.

3.3 Handling and transportation

- During handling and transportation, carry the appliance in its original packaging. The packaging of the appliance protects it against physical damages.
- Do not place heavy loads on the appliance or the packaging. The appliance may be damaged.
- Dropping the appliance may render it non-operational or cause permanent damage.

