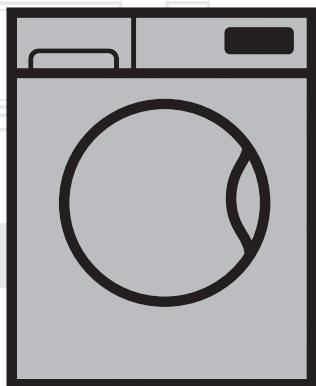


# Washing Machine

## User's Manual

**Pralni stroj**  
Uporabniški priročnik



WTE 7612 BS

EN / SL

Document Number= 2820526129\_EN / 11-09-17.(14:26)

**beko**



This product was manufactured using the latest technology in environmentally friendly conditions.

---

# 1 General safety instructions

This section includes security instructions which may help prevent the injuries and material damage risks. All kinds of warranties shall be invalid if these instructions are not observed.

## 1.1 Life and property safety

- ▶ Never place the product on a carpet-covered floor. Electrical parts will get overheated since air cannot circulate from under the device. This will cause problems with your product.
- ▶ Unplug the product if it is not in use.
- ▶ Always have the installation and repairing procedures carried out by the Authorised Service Agent. The manufacturer shall not be held liable for damages that may arise from procedures carried out by unauthorised persons.
- ▶ The water supply and draining hoses must be securely fastened and remain undamaged. Otherwise, water leak may occur.
- ▶ While there is still water inside the product, never open the loading door or remove the filter. Otherwise, risk of flooding and injury from hot water will occur.
- ▶ Do not force open the locked loading door. Door can be opened a few minutes after the washing cycle ends. In case of forcing the loading door to open, the door and the lock mechanism may get damaged.
- ▶ Use detergents, softeners and supplements suitable for automatic washing machines only.
- ▶ Follow the instructions on the label of textiles and the detergent package.

## 1.2 Children's safety


- ▶ This product can be used by the children who are at the age of 8 and over and the people whose physical, sensory or mental skills are not fully developed or who do not have necessary required experience and knowledge as long as they are supervised or trained about the safe use of the product and its risks. Children should not play with the device. Cleaning and maintenance works should not be performed by children unless they are supervised by someone. Children of less than 3 years should be kept away unless continuously supervised.
- ▶ Packaging materials may be dangerous for the children. Keep packaging materials in a safe place away from reach of the children.

- ▶ Electrical products are dangerous for the children. Keep the children away from the product when it is in use. Do not allow them to play with the product. Use child lock to prevent children from intervening with the product.
- ▶ Do not forget to close the loading door when leaving the room where the product is located.
- ▶ Store all detergents and additives in a safe place away from the reach of the children by closing the cover of the detergent container or sealing the detergent package.

### 1.3 Electrical safety

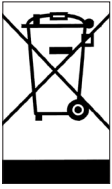
- ▶ If the product has a failure, it should not be operated unless it is repaired by the Authorised Service Agent. Risk of electric shock!
- ▶ This product is designed to resume operating in the event of powering on after a power interruption. If you wish to cancel the programme, see "Cancelling the programme" section.
- ▶ Plug the product into a grounded outlet protected by a 16 A fuse. Do not neglect to have the grounding installation made by a qualified electrician. Our company shall not be liable for any damages that will arise when the product is used without grounding in accordance with the local regulations.
- ▶ Do not wash the product by spraying or pouring water onto it! Risk of electric shock!
- ▶ Never touch the power cable plug with wet hands! Do not grab the power cord to unplug the machine, always unplug it by holding the socket with one hand, and pulling the plug with the other hand.
- ▶ Product should be unplugged during installation, maintenance, cleaning and repair procedures.
- ▶ If the power cable is damaged, it must be replaced by the manufacturer, after sales service or a similarly qualified person (preferably an electrician) or someone designated by the importer in order to avoid possible risks.

### 1.4 Hot surface safety

	<p>While washing the laundry at high temperatures, the loading door glass will get hot. Considering this fact, during washing operation keep the children away from the loading door of the product to prevent them touching it.</p>
---	--

## 2 Important instructions for environment

### 2.1 Compliance with WEEE Directive



This product complies with EU WEEE Directive (2012/19/EU). This product bears a classification symbol for waste electrical and electronic equipment (WEEE).

This product has been manufactured with high quality parts and materials which can be reused and are suitable for recycling. Do not dispose of the waste product with normal domestic and other wastes at the end of its service life. Take it to the collection center for the recycling of electrical and electronic equipment. Please consult your local authorities to learn about these collection centers.

Compliance with RoHS Directive:

The product you have purchased complies with EU RoHS Directive (2011/65/EU). It does not contain harmful and prohibited materials specified in the Directive.

### 2.2 Package information

Packaging materials of the product are manufactured from recyclable materials in accordance with our National Environment Regulations. Do not dispose of the packaging materials together with the domestic or other wastes. Take them to the packaging material collection points designated by the local authorities.

## 3 Intended use

- This product has been designed for domestic use. It is not for commercial purposes or it should not be used out of its intended use.
- The product must only be used for washing and rinsing of laundry that are marked accordingly.
- The manufacturer waives any responsibility arisen from incorrect usage or transportation.
- The service life of your product is 10 years. During this period, original spare parts will be available to operate the appliance properly.

## 4 Technical specifications

### Complying Commission Delegated Regulation (EU) No 1061/2010

Supplier name or trademark	Beko
Model name	WTE 7612 BS
Rated capacity (kg)	7
Energy efficiency class / Scale from A+++ (Highest Efficiency) to D (Lowest Efficiency)	A+++
Annual Energy Consumption (kWh) <sup>(1)</sup>	173
Energy consumption of the standard 60°C cotton programme at full load (kWh)	0,810
Energy consumption of the standard 60°C cotton programme at partial load (kWh)	0,670
Energy consumption of the standard 40°C cotton programme at partial load (kWh)	0,790
Power consumption in 'off-mode' (W)	0,250
Power consumption in 'left-on mode' (W)	1,000
Annual Water Consumption (l) <sup>(2)</sup>	9899
Spin-drying efficiency class / Scale from A (Highest Efficiency) to G (Lowest Efficiency)	B
Maximum spin speed (rpm)	1200
Remaining moisture Content (%)	53
Standard cotton programme <sup>(3)</sup>	Cotton Eco 60°C and 40°C
Programme time of the standard 60°C cotton programme at full load (min)	215
Programme time of the standard 60°C cotton programme at partial load (min)	195
Programme time of the standard 40°C cotton programme at partial load (min)	185
Duration of the left-on mode (min)	N/A
Airborne acoustical noise emissions washing/spinning (dB)	62/77
Built-in	No
Height (cm)	84
Width (cm)	60
Depth (cm)	49
Net weight (±4 kg.)	62
Single Water inlet / Double Water inlet	• / -
• Available	
Electrical input (V/Hz)	230 V / 50Hz
Total current (A)	10
Total power (W)	2200
Main model code	9217

<sup>(1)</sup> Energy Consumption based on 220 standard washing cycles for cotton programmes at 60°C and 40°C at full and partial load, and the consumption of the low-power modes. Actual energy consumption will depend on how the appliance is used.

<sup>(2)</sup> Water consumption based on 220 standard washing cycles for cotton programmes at 60°C and 40°C at full and partial load. Actual water consumption will depend on how the appliance is used.

<sup>(3)</sup> "Standard 60°C cotton programme" and the "standard 40°C cotton programme" are the standard washing programmes to which the information in the label and the fiche relates and these programmes are suitable to clean normally soiled cotton laundry and that they are the most efficient programmes in terms of combined energy and water consumption.

Technical specifications may be changed without prior notice to improve the quality of the product.

## 4.1 Installation

- Apply to the nearest authorised service agent for the installation of your product.
- Preparation of the location and electrical, tap water and waste water installations at the place of installation is under customer's responsibility.
- Make sure that the water inlet and discharge hoses as well as the power cable are not folded, pinched or crushed while pushing the product into its place after installation or cleaning procedures.
- Make sure that the installation and electrical connections of the product are performed by authorised service. Manufacturer shall not be held liable for damages that may arise from procedures carried out by unauthorised persons.
- Prior to installation, visually check if the product has any defects on it. If so, do not have it installed. Damaged products cause risks for your safety.

### 4.1.1 Appropriate installation location

- Place the product on a hard and level floor. Do not put it onto a carpet with high pile or other similar surfaces.
- When the washing machine and dryer are placed on top of each other, their total weight -when loaded- amounts to 180 kilograms. Place the product on a solid and flat floor that has sufficient load carrying capacity!
- Do not place the product on the power cable.
- Do not install the product in the environments where the temperature falls below 0 °C.
- Leaving a gap at the sides of the machine is suggested to reduce vibration and noise
- On a graduated floor, do not place the product next to the edge or on a platform.
- Do not place heat sources such as Hobs, Irons, Ovens, etc. on the washing machine and do not use them on the product.

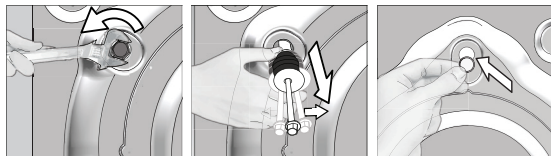
### 4.1.2 Removing packaging reinforcement



Tilt the machine backwards to remove the packaging reinforcement. Remove the packaging reinforcement by pulling the ribbon. Do not make this operation alone by yourself.

### 4.1.3 Removing the transportation locks

- 1 Loosen all bolts with an appropriate wrench until they turn freely.
- 2 Remove the transport safety bolts by turning them slightly.
- 3 Insert the plastic covers in the bag containing the user manual to the openings on the rear panel.



**CAUTION:** Remove the transportation safety bolts before operating the washing machine! Otherwise, the product will be damaged.



Keep the transportation safety bolts in a safe place to reuse when the washing machine needs to be moved again in the future.

Install the transport safety bolts in reverse order of the disassembly procedure.

Never move the product without the transportation safety bolts properly fixed in place!

## 4.1.4 Connecting water supply

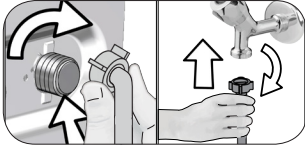


The water supply pressure required to run the product is between 1 to 10 bars (0.1 - 1 MPa). It is necessary to have 10 - 80 liters of water flowing from the fully open tap in one minute to have your machine run smoothly. Attach a pressure reducing valve if water pressure is higher.



**CAUTION:** Models with a single water inlet should not be connected to the hot water tap. In such a case the laundry will get damaged or the product will switch to protection mode and will not operate.

**CAUTION:** Do not use old or used water inlet hoses on the new product. It may cause stains on your laundry.



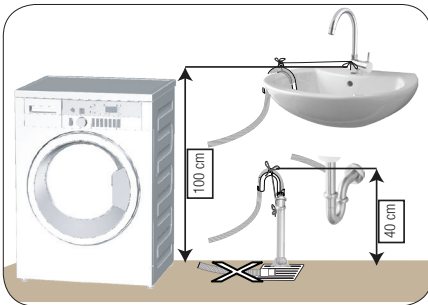
- 1 Tighten the nuts of the hose by hand. Never use a tool when tightening the nuts.
- 2 When hose connection is completed, check whether there is leak problems at the connection points by opening the taps fully. If any leaks occur, turn off the tap and remove the nut. Retighten the nut carefully after checking the seal. In order to prevent the water leaks and resultant damages, keep the taps closed when you do not use the product.

## 4.1.5 Connecting the drain hose to the drain

- Attach the end of the drain hose directly to waste water drain, lavatory or bathtub.



**CAUTION:** Your drain house will be flooded if the hose comes out of its housing during water discharge. Moreover, there is risk of scalding due to high washing temperatures! In order to prevent such situations and make sure that the machine performs water intake and discharge processes without any problem, fix the drain hose securely.



- Connect the drain hose to a minimum height of 40 cm and a maximum height of 100 cm.
- In case the drain hose is elevated after laying it on the floor level or close to the ground (less than 40 cm above the ground), water discharge becomes more difficult and the laundry may come out excessively wet. Therefore, follow the heights described in the figure.

- To prevent the waste water to go back into the machine again and to ensure easy drainage, do not immerse the end of the hose into the waste water or do not insert it into the drain for more than 15 cm. If it is too long, cut it short.
- The end of the hose should not be bent, it should not be stepped on and the hose must not be pinched between the drain and the machine.
- If the length of the hose is too short, use it by adding an original extension hose. Length of the hose may not be longer than 3.2 m. To avoid water leak failures, the connection between the extension hose and the drain hose of the product must be fitted well with an appropriate clamp as not to come off and leak.



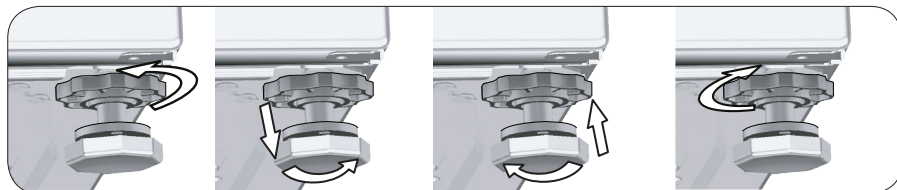
## 4.1.6 Adjusting the feet



**CAUTION:** In order to ensure that the product operates more silently and vibration-free, it must stand level and balanced on its feet. Balance the machine by adjusting the feet. Otherwise, the product may move from its place and cause crushing and vibration problems.

**CAUTION:** Do not use any tools to loosen the lock nuts. Otherwise, they will get damaged.

- 1 Loosen the lock nuts on the feet by hand.
- 2 Adjust the feet until the product stands in a stable and balanced way.
- 3 Tighten all lock nuts by hand again.



## 4.1.7 Electrical connection

Connect the product to a grounded outlet protected by a 16 A fuse. Our company shall not be liable for any damages that will arise when the product is used without grounding in accordance with the local regulations.

- Connection must comply with national regulations.
- The wiring for the electrical outlet circuit must be sufficient to meet the appliance requirements. Use of a Ground Fault Circuit Interrupter (GFCI) is recommended.
- Power cable plug must be within easy reach after installation.
- If the current value of the fuse or breaker in the house is less than 16 Amps, have a qualified electrician install a 16 Amp fuse.
- The voltage specified in the "Technical specifications" section must be equal to your mains voltage.
- Do not make connections via extension cables or multi-plugs.



**CAUTION:** Damaged power cables must be replaced by the Authorised Service Agents.

## 4.1.8 Initial use



Before starting to use the product make sure that the preparations are made which are in line with the "Important Safety and Environment Instructions" and the instructions in the "Installation" section.

To prepare the product for washing laundry, perform first operation in Drum Cleaning programme. If this program is not available in your machine, apply the method which is described in the section 4.4.2.



Use an anti-limescale suitable for the washing machines.

Some water might have remained in the product due to the quality control processes in the production. It is not harmful for the product.

## 4.2 Preparation

### 4.2.1 Sorting the laundry

- \* Sort laundry according to type of fabric, color, and degree of soiling and allowable water temperature.
- \* Always obey the instructions given on the garment tags.

### 4.2.2 Preparing laundry for washing

- Laundry items with metal attachments such as, underwired bras, belt buckles or metal buttons will damage the machine. Remove the metal pieces or wash the clothes by putting them in a laundry bag or pillow case.
- Take out all substances in the pockets such as coins, pens and paper clips, and turn pockets inside out and brush. Such objects may damage the product or cause noise problem.
- Put small size clothes such as infant's socks and nylon stockings in a laundry bag or pillow case.
- Place curtains in without compressing them. Remove curtain attachment items.
- Fasten zippers, sew loose buttons and mend rips and tears.
- Wash "machine washable" or "hand washable" labeled products only with an appropriate programme.
- Do not wash colours and whites together. New, dark coloured cottons release a lot of dye. Wash them separately.
- Tough stains must be treated properly before washing. If unsure, check with a dry cleaner.
- Only use the dyes / color changers and descaling agents which are appropriate to machine wash. Always follow the instructions on the package.
- Wash trousers and delicate laundry turned inside out.
- Keep laundry items made of Angora wool in the freezer for a few hours before washing. This will reduce pilling.
- Laundry that are subjected to materials such as flour, lime dust, milk powder, etc. intensely must be shaken off before placing into the machine. Such dusts and powders on the laundry may build up on the inner parts of the machine in time and can cause damage.

### 4.2.3 Things to be done for energy saving

Following information will help you use the product in an ecological and energy-efficient manner.

- Operate the product in the highest capacity allowed by the programme you have selected, but do not overload; see, "Programme and consumption table". See, "Programme and consumption table"
- Always follow the instructions on the detergent packaging.
- Wash slightly soiled laundry at low temperatures.
- Use faster programmes for small quantities of lightly soiled laundry.
- Do not use prewash and high temperatures for laundry that is not heavily soiled or stained.
- If you plan to dry your laundry in a dryer, select the highest spin speed recommended during washing process.
- Do not use more detergent than the recommended amount specified on its package.

### 4.2.4 Loading the laundry

1. Open the laundry cover.
2. Put the laundry items into the machine in a loose manner.
3. Push and close the loading cover until you hear the locking sound. Ensure that no items are caught in the door. The loading door is locked while a programme is running. The door can only be opened a while after the programme comes to an end.

### 4.2.5 Correct load capacity

The maximum load capacity depends on the type of laundry, the degree of soiling and the washing programme desired.

Machine automatically adjusts the water amount according to the weight of the laundry put inside it.

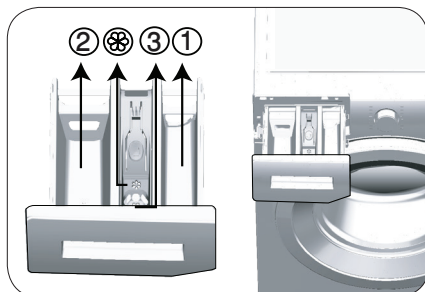


**WARNING:** Follow the information in the "Programme and consumption table". When overloaded, machine's washing performance will drop. Moreover, noise and vibration problems may occur.

## 4.2.6 Using detergent and softener



When using detergent, softener, starch, fabric dye, bleach and decolorant, descaling agents; read the manufacturer's instructions written on the package and follow the dosages specified. Use measuring cup if available.



The detergent drawer is composed of three compartments:

- (1) for prewash
- (2) for main wash
- (3) for softener
- (⊗) in addition, there is a siphon piece in the softener compartment.

### Detergent, softener and other cleaning agents

- Add detergent and softener before starting the washing programme.
  - While the washing cycle is in progress, do not leave the detergent dispenser open!
  - When using a programme without prewash, do not put any detergent into the prewash compartment (compartment nr. "1").
  - In a programme with prewash, do not put liquid detergent into the prewash compartment (compartment nr. "1").
  - Do not select a programme with prewash if you are using a detergent bag or dispensing ball. Place the detergent bag or the dispensing ball directly among the laundry in the machine.
- If you are using liquid detergent, do not forget to place the liquid detergent container into the main wash compartment (compartment number "2").

### Choosing the detergent type

Detergent type to be used depends on the fabric type and color.

- Use different detergents for coloured and white laundry.
- Wash your delicate clothes only with special detergents (liquid detergent, wool shampoo, etc.) used solely for delicate clothes.
- When washing dark coloured clothes and quilts, it is recommended to use liquid detergent.
- Wash woolens with special detergent made specifically for woolens.



**CAUTION:** Use only detergents manufactured specifically for washing machines.

**CAUTION:** Do not use soap powder.

### Adjusting detergent amount

The amount of washing detergent to be used depends on the amount of laundry, the degree of soiling and water hardness.

- Do not use amounts exceeding the dosage quantities recommended on the detergent package to avoid problems of excessive foam, poor rinsing, financial savings and finally, environmental protection.
- Use lesser detergent for small amounts or lightly soiled clothes.

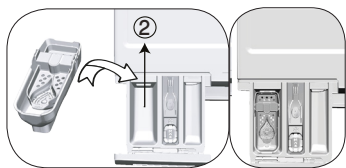
### Using softeners

Pour the softener into the softener compartment of the detergent drawer.

- Do not exceed the (>max<) level sign on the softener compartment.
- If the softener has lost its fluidity, dilute it with water before putting it in the detergent drawer.

## Using liquid detergents

### If the product contains a liquid detergent cup:



- Put the liquid detergent container into the compartment no "2".
- If the liquid detergent lost its fluidity, dilute it with water before putting it into the detergent container.

### If the product does not contain a liquid detergent cup:

- Do not use liquid detergent for the prewash in a programme with prewash.
- Liquid detergent stains your clothes when used with Delayed Start function. If you are going to use the Delayed Start function, do not use liquid detergent.

### Using gel and tablet detergent

- If the gel detergent thickness is fluidal and your machine does not contain a special liquid detergent cup, put the gel detergent into the main wash detergent compartment during first water intake. If your machine contains a liquid detergent cup, fill the detergent into this cup before starting the programme.
- If the gel detergent thickness is not fluidal or in the shape of capsule liquid tablet, put it directly into the drum before washing.
- Put tablet detergents into the main wash compartment (compartment nr. "2") or directly into the drum before washing.

### Using starch

- Put the liquid soda, powder soda or the fabric dye into the softener compartment. Do not use softener and starch together in a washing cycle. Wipe the inside of the machine with a damp and clean cloth after using starch.

### Using limescale remover

- When required, use limescale removers manufactured specifically for washing machines only.

### Using bleaches

Add the bleach at the beginning of the washing cycle by selecting a prewash program. Do not put detergent in the prewash compartment. As an alternative application, select a programme with extra rinse and add the bleaching agent while the machine is taking water from the detergent compartment during first rinsing step.

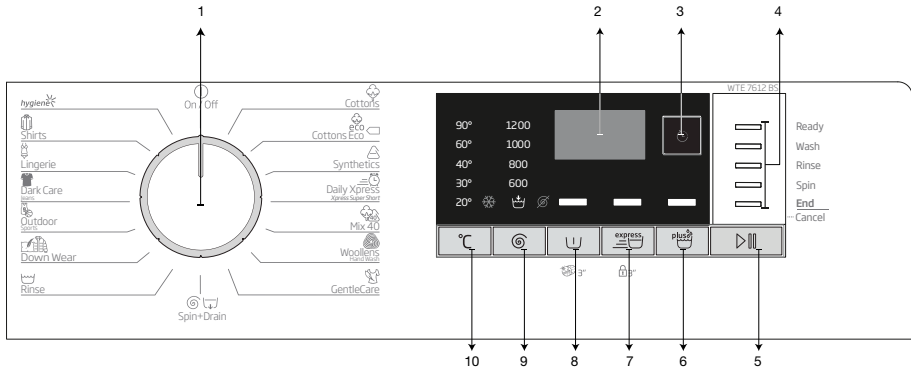
- Do not use bleaching agent and detergent by mixing them.
- Use just a little amount (approx. 50 ml) of bleaching agent and rinse the clothes very well as it causes skin irritation. Do not pour the bleach onto the laundry and do not use it with the colored items.
- When using oxygen-based decolorant, select a program which washes the laundry at a low temperature.
- Oxygen-based decolorant can be used with the detergent; however, if it is not at the same consistence, first put detergent in the compartment number "2" in the detergent dispenser and wait for the machine to flush the detergent when taking in water. While the machine continues taking in water, add decolorant in the same compartment.

## 4.2.7 Tips for efficient washing

		Clothes			
		Light Colours and Whites	Colours	Black/Dark Colours	Delicates/Woolens/Silks
		(Recommended temperature range based on soiling level: 40-90 °C)	(Recommended temperature range based on soiling level: cold -40 °C)	(Recommended temperature range based on soiling level: cold -40 °C)	(Recommended temperature range based on soiling level: cold -30 °C)
<b>Soiling Level</b>	<b>Heavily Soiled</b> (difficult stains such as grass, coffee, fruits and blood.)	It may be necessary to pre-treat the stains or perform prewash. Powder and liquid detergents recommended for whites can be used at dosages recommended for heavily soiled clothes. It is recommended to use powder detergents to clean clay and soil stains and the stains that are sensitive to bleaches.	Powder and liquid detergents recommended for colors can be used at dosages recommended for heavily soiled clothes. It is recommended to use powder detergents to clean clay and soil stains and the stains that are sensitive to bleaches. Use detergents without bleach.	Liquid detergents suitable for colors and dark colors can be used at dosages recommended for heavily soiled clothes.	Prefer liquid detergents produced for delicate clothes. Woolen and silk clothes must be washed with special woolen detergents.
	<b>Normally Soiled</b> (For example, stains caused by body on collars and cuffs)	Powder and liquid detergents recommended for whites can be used at dosages recommended for normally soiled clothes.	Powder and liquid detergents recommended for colors can be used at dosages recommended for normally soiled clothes. Detergents which do not contain bleach should be used.	Liquid detergents suitable for colors and dark colors can be used at dosages recommended for normally soiled clothes.	Prefer liquid detergents produced for delicate clothes. Woolen and silk clothes must be washed with special woolen detergents.
	<b>Lightly Soiled</b> (No visible stains exist.)	Powder and liquid detergents recommended for whites can be used at dosages recommended for lightly soiled clothes.	Powder and liquid detergents recommended for colors can be used at dosages recommended for lightly soiled clothes. Detergents which do not contain bleach should be used.	Liquid detergents suitable for colors and dark colors can be used at dosages recommended for lightly soiled clothes.	Prefer liquid detergents produced for delicate clothes. Woolen and silk clothes must be washed with special woolen detergents.

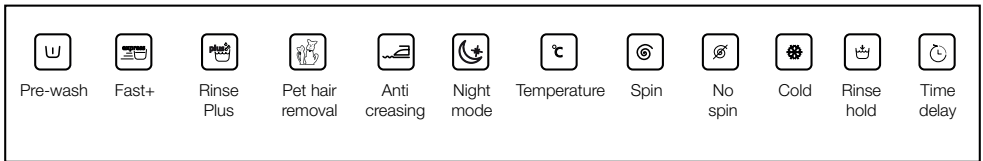
## 4.3 Operating the product

### 4.3.1 Control panel



- 1 - Programme Selection knob (Uppermost position On / Off)
- 2 - Display
- 3 - Delayed Start Button
- 4 - Programme Follow-up indicator
- 5 - Start / Pause button

- 6 - Auxiliary function button 3
- 7 - Auxiliary function button 2
- 8 - Auxiliary function button 1
- 9 - Spin Speed Adjustment button
- 10 - Temperature Adjustment button



### 4.3.2 Preparing the machine

1. Make sure that the hoses are connected tightly.
2. Plug in your machine.
3. Turn the tap on completely.
4. Place the laundry in the machine.
5. Add detergent and fabric softener.

### 4.3.3 Programme selection and tips for efficient washing

1. Select the programme suitable for the type, quantity and soiling degree of the laundry in accordance with the "Programme and consumption table" and the temperature table below.
2. Select the desired programme with the Programme Selection knob.

## 4.3.4 Programme and consumption table

EN						Auxiliary functions			
Programme		Max. Load (kg)	Water Consumption (l)	Energy Consumption (kWh)	Max. Speed***	Prewash	Fast+	Extra Rinse	Temperature
Cottons	90	7	92	2,25	1200	•	•	•	Cold-90
	60	7	92	1,70	1200	•	•	•	Cold-90
	40	7	89	1,05	1200	•	•	•	Cold-90
Cottons Eco	60**	7	51,1	0,81	1200				Cold-60
	60**	3,5	40,4	0,67	1200				Cold-60
	40**	3,5	40,4	0,79	1200				Cold-60
Synthetics	60	3	65	1,20	1200	•	•	•	Cold-60
	40	3	63	0,75	1200	•	•	•	Cold-60
Daily Xpress / Xpress Super Short	90	7	62	2,00	1200		•	•	Cold-90
	60	7	62	1,10	1200		•	•	Cold-90
	30	7	60	0,20	1200		•	•	Cold-90
Daily Xpress / Xpress Super Short + Fast+	30	2	41	0,15	1200		•	•	Cold-30
Mix 40	40	3	65	0,75	800	•	•		Cold-40
Wollens / Hand Wash	40	1,5	55	0,55	1200			•	Cold-40
GentleCare	30	3	51	0,65	1200			•	Cold-40
Down Wear	60	1,5	70	1,25	1000			•	Cold-60
Outdoor / Sports	40	3	44	0,45	1200	•			Cold-40
Dark Care / Jeans	40	2,5	82	0,85	1200	•		*	Cold-40
Lingerie	30	1	65	0,30	600			*	Cold-30
Shirts	60	3	55	1,20	800	•	•	•	Cold-60
Hygiene	90	7	119	2,40	1200			*	20-90
Drum Cleaning	90	-	73	2,10	600				90

• : Selectable


\* : Automatically selected, no canceling.

\*\* : Energy Label programme (EN 60456 Ed.3)

\*\*\*: If maximum spin speed of the machine is lower then this value, you can only select up to the maximum spin speed.

- : See the programme description for maximum load.

 \*\* "Cotton Economic 40°C and Cotton Economic 60°C are standard programmes." These programmes are known as '40°C cotton standard programme' and '60°C cotton standard programme' and indicated with the   symbols on the panel.

 Water and power consumption may vary subject to the changes in water pressure, water hardness and temperature, ambient temperature, type and amount of laundry, selection of auxiliary functions and spin speed, and changes in electric voltage.

You can see the washing duration on the display of your machine while selecting a programme. Depending on the amount of laundry you have loaded into your machine, there may be a difference of 1-1.5 hours between the duration shown on the display and the actual duration of the wash cycle. Duration will be automatically updated soon after the washing starts.

The auxiliary functions in the table may vary according to the model of your machine.

Indicative values for Synthetics programmes (EN)						
	Load (kg)	Water Consumption (l)	Energy Consumption (kWh)	Programme Duration (min) *	Remaining Moisture Content (%) ** ≤ 1000 rpm	Remaining Moisture Content (%) ** > 1000 rpm
Synthetics 60	3	65	1,20	115/140	45	40
Synthetics 40	3	63	0,75	115/140	45	40

\* You can see the washing time of the programme you have selected on the display of the machine. It is normal that small differences may occur between the time shown on the display and the real washing time.

\*\* Remaining moisture content values may differ according to the selected spin speed.

### 4.3.5 Main programmes

Depending on the type of fabric, use the following main programmes.

#### • Cottons


You can wash your durable cotton laundry (sheets, bedlinen, towels, bathrobes, underwear etc.) in this programme. When the quick wash function button is pressed, programme duration becomes notably shorter but effective washing performance is ensured with intense washing movements. If the quick wash function is not selected, superior washing and rinsing performance is ensured for your heavily soiled laundry.

#### • Synthetics

You can wash your laundry (such as shirts, blouses, synthetic/cotton blended fabrics etc.) in this programme. The programme duration gets notable shorter and washing with high performance is ensured. If the quick wash function is not selected, superior washing and rinsing performance is ensured for your heavily soiled laundry.


#### • Woollens / Hand Wash

Use to wash your woolen/delicate laundry. Select the appropriate temperature complying with the tag of your clothes. Your laundry will be washed with a very gentle washing action in order not to damage the clothes.

 APPAREL CARE	<p>"Woolens programme of this machine is approved by "The Woolmark Company" for washing machine-washable woolen products provided that the products are washed in accordance with the instructions on the product tag and the instructions published by the manufacturer of this machine. M1520"</p> <p>In UK, Ireland, Hong Kong and India, the Woolmark trademark is a Certification trademark.</p>
--	---

### 4.3.6 Additional programmes

For special cases, additional programmes are available in the machine.

	<p>Additional programmes may differ according to the model of the machine.</p>
---	--

#### • Cottons Eco

Use to wash your normally soiled, durable cotton and linen laundry. Although it washes longer than all other programmes, it provides high energy and water savings. Actual water temperature may be different from the stated wash temperature. When you load the machine with less laundry (e.g. ½ capacity or less), periods in programme stages may automatically get shorter. In this case, energy and water consumption will decrease more, providing a more economic wash.



- **Hygiene**

This is a long-duration programme that you can use for your laundry requiring a hygienic washing at high temperatures with intensive and long washing cycle. The high level of hygiene is ensured thanks to long heating duration and additional rinsing step.

- **GentleCare**

You can wash your delicate clothes such as cotton/synthetic blended knitwear or hosiery in this programme. It washes with more delicate washing action. Wash your clothes whose colour you want to preserve either at 20degrees or by selecting the cold wash option.

- **Daily Xpress / Xpress Super Short**

Use this programme to wash your lightly soiled or unspotted cotton clothes in a short time. The programme duration can be reduced up to 14 minutes when the quick wash function is selected. When the quick wash function is selected, maximum 2 (two) kg of laundry must be washed.

- **Dark Care / Jeans**

Use this programme to protect the colour of your dark-coloured garments or jeans. It performs high performance washing with special drum movement even if the temperature is low. It is recommended to use liquid detergent or woolen shampoo for dark coloured laundry. Do not wash your delicate clothes containing wool or etc.

- **Mix 40**

Use to wash your cotton and synthetic clothes together without sorting them.

- **Shirts**

This programme is used to wash the shirts made from cotton, synthetic and synthetic blended fabrics altogether. It reduces wrinkles. When the quick wash function is selected, the Pre-treatment algorithm is executed.

- Apply the pre-treatment chemical on your garments directly or add it together with detergent when the machine starts to take water from the main washing compartment. Thus, you can obtain the same performance as you obtain with normal washing in a much shorter period of time. Usage life of your shirts increases.

- **Outdoor / Sports**

You can use this programme to wash sports and outdoors garments that contain cotton/synthetics mix and water repellent covers such as gore-tex etc. It makes sure your garments are washed gently thanks to special rotating movements.

- **Lingerie**

You can use this programme to wash delicate garments that are suitable for hand wash and delicate women's underwear. Small amount of garments must be washed in a washing net. Hooks, buttons etc. must be done up and zips must be zipped up.

- **Down Wear**

Use this programme to wash your coats, vest, jackets etc. containing feathers with a "machine-washable" label on them. Thanks to special spinning profiles, it is ensured that the water reaches the air gaps amongst the feathers.

### 4.3.7 Special programmes

For specific applications, select any of the following programmes.

- **Rinse**

Use when you want to rinse or starch separately.

- **Spin+Drain**

You can use this function to remove the water on the garment or drain the water in the machine. Before selecting this programme, select the desired spin speed and press Start / Pause button. First, the machine will drain the water inside of it. Then, it will spin the laundry with the set spin speed and drain the water coming out of them.

If you wish to drain only the water without spinning your laundry, select the Pump+Spin programme and then select the No Spin function with the help of Spin Speed Adjustment button. Press Start / Pause button.



Use a lower spin speed for delicate laundries.

### 4.3.8 Temperature selection

Whenever a new programme is selected, the recommended temperature value for the selected programme appears on the temperature indicator.

To decrease the temperature, press the Temperature Adjustment button. Temperature will decrease gradually. Temperature level lights will not turn on when the cold level is selected.



If the programme has not reached the heating step, you can change the temperature without switching the machine to Pause mode.

### 4.3.9 Spin speed selection

Whenever a new programme is selected, the recommended spin speed of the selected programme is displayed on the spin speed indicator.

To decrease the spin speed, press the Spin Speed Adjustment button. Spin speed decreases gradually. Then, depending on the model of the product, "Rinse Hold" and "No Spin" options appear on the display. When "No Spin" is selected, the rinse level indicator lights will not turn on.

#### **Rinse hold**

If you are not going to unload your clothes immediately after the programme completes, you can use rinse hold function to keep your laundry in the final rinsing water in order to prevent them from getting wrinkled when there is no water in the machine. Press Start / Pause button after this process if you want to drain the water without spinning your laundry. Programme will resume and complete after draining the water.

If you want to spin the laundry held in water, adjust the Spin Speed and press Start / Pause button. The programme will resume. Water is drained, laundry is spun and the programme is completed.



If the programme has not reached the spinning step, you can change the speed without switching the machine to Pause mode.

### 4.3.10 Auxiliary function selection

Select the desired auxiliary functions before starting the programme. Furthermore, you may also select or cancel auxiliary functions that are suitable to the running programme without pressing the Start / Pause button when the machine is operating. For this, the machine must be in a step before the auxiliary function you are going to select or cancel. If the auxiliary function cannot be selected or canceled, light of the relevant auxiliary function will blink 3 times to warn the user.



If a second auxiliary function conflicting with the first one is selected before starting the machine, the function selected first will be canceled and the second auxiliary function selection will remain active.

An auxiliary function that is not compatible with the programme cannot be selected. (See, "Programme and consumption table")

Auxiliary Function buttons may vary according to the model of the machine.

### 4.3.10.1 Auxiliary functions

#### • Prewash

A Prewash is only worthwhile for heavily soiled laundry. Not using the Prewash will save energy, water, detergent and time.



Prewash without detergent is recommended for tulle and curtains.

#### • Fast+

When this function is selected, the durations of the relevant programmes get shorter by 50%. Thanks to the optimised washing steps, high mechanic activity and optimum water consumption, high washing performance is achieved in spite of the reduced duration.



When you select this function, load your machine with half of the maximum laundry specified in the programme table.

#### • Extra Rinse

This function enables the product to make another rinsing in addition to the one already made after the main wash. Thus, the risk for sensitive skins (babies, allergic skins, etc.) to be effected by the minimal detergent remnants on the laundry can be reduced.

### 4.3.10.2 Functions/Programmes Selected by Pressing the Function Buttons for 3 Seconds

#### • Drum Cleaning 3"

Press and hold the auxiliary function button 1 for 3 seconds to select the programme. Use regularly (once in every 1-2 months) to clean the drum and provide the required hygiene. Operate the programme while the machine is completely empty. To obtain better results, put powder lime-scale remover for washing machines into the detergent compartment no. "2". When the programme is over, leave the loading door ajar so that the inside of the machine gets dry.



This is not a washing programme. It is a maintenance programme.

Do not run the programme when there is something in the machine. If you try to do so, the machine detects that there is load inside and aborts the programme.

#### • Child lock

Use Child Lock function to prevent children from tampering with the machine. Thus you can avoid any changes in a running programme.



If the Programme Selection knob is turned when the Child Lock is active, "Con" appears on the display. The Child Lock does not allow any change in the programmes and the selected temperature, speed and auxiliary functions.

Even if another programme is selected with the Programme Selection knob while the Child Lock is active, previously selected programme will continue running.

#### To activate the Child Lock:

2. Pres and hold the Auxiliary Function button for 3 seconds. C03, C02, C01 will appear on the display respectively while you keep the button pressed for 3 seconds. Then, while the light of the Auxiliary Function button 2 is flashing, "Con" will appear on the display indicating that the child lock has been activated. If you press any button or turn the Programme Selection knob when the Child Lock is active, same phrase will appear on the display.

### To deactivate the Child Lock:

Press and hold the Auxiliary Function button 2 for 3 seconds while a programme is running. CO3, CO2, CO1 will appear on the display respectively while you keep the button pressed for 3 seconds. Then, while the light of the auxiliary function button 2 is flashing, "COF" will appear on the display indicating that the child lock has been deactivated.



In addition to the method above, to deactivate the Child Lock, switch the Programme Selection knob to On / Off position when no programme is running, and select another programme.

Child Lock is not deactivated after power failures or when the machine is unplugged.

### 4.3.11 Delayed Start

With the Delayed Start function the startup of the programme may be delayed up to 19 hours. Delayed start time can be increased by increments of 1 hour.



Do not use liquid detergents when you set Delayed Start! There is the risk of staining of the clothes.

1. Open the loading door, place the laundry and put detergent, etc.
2. Select the washing programme, temperature, spin speed and, if required, the auxiliary functions.
3. Set the desired time by pressing the Delayed Start button.
4. Press Start / Pause button. The delayed start time you have set is displayed. Delayed start countdown starts. " \_ " symbol next to the delayed start time moves up and down on the display.



Additional laundry may be loaded during the delayed start period.

5. At the end of the countdown, duration of the selected programme will be displayed. " \_ " will disappear and the selected programme will start.

#### Changing the delayed start period

If you want to change the time during countdown:

1. Press the Delayed Start button. Time will increase by 1 hour each time you press the button.
2. If you want to decrease the delayed start time, press Delayed Start button repeatedly until the desired delayed start time appears on the display.

#### Canceling the Delayed Start function

If you want to cancel the delayed start countdown and start the programme immediately:

1. Set the Delayed Start period to zero or turn the Programme Selection knob to any programme. Thus, Delayed Start function will be canceled. The End/Cancel light flashes continuously.
2. Then, select the programme you want to run again.
3. Press Start / Pause button to start the programme.

### 4.3.12 Starting the programme

1. Press Start / Pause button to start the programme.
2. Programme follow-up light showing the startup of the programme will turn on.



If no programme is started or no button is pressed within 1 minute during programme selection process, the machine will switch to Pause mode and the illumination level of the temperature, speed and loading door indicator lights will decrease. Other indicator lights and indicators will turn off. Once the Programme Selection knob is rotated or any button is pressed, indicator lights and indicators will turn on again.

### 4.3.13 Progress of programme

Progress of a running programme can be followed from the Programme Follow-up indicator. At the beginning of every programme step, the relevant indicator light will turn on and light of the completed step will turn off.

You can change the auxiliary functions, speed and temperature settings without stopping the programme flow while the programme is running. To do this, the change you are going to make must be in a step after the running programme step. If the change is not compatible, relevant lights will flash for 3 times.



If the machine does not pass to the spinning step, Rinse Hold function might be active or the automatic unbalanced load detection system might be activated due to the unbalanced distribution of the laundry in the machine.

### 4.3.14 Loading door lock

There is a locking system on the loading door of the machine that prevents opening of the loading door in cases when the water level is unsuitable.

Loading door light will start flashing when the machine is switched to Pause mode. Machine checks the level of the water inside. If the level is suitable, Loading Door light illuminates steadily within 1-2 minutes and the loading door can be opened.

If the level is unsuitable, Loading Door light turns off and the loading door cannot be opened. If you are obliged to open the Loading Door while the Loading Door light is off, you must cancel the current programme. See, "Cancelling the programme"

### 4.3.15 Changing the selections after programme has started

#### Switching the machine to pause mode

Press the Start / Pause button to switch the machine to pause mode while a programme is running. The light of the step which the machine is in starts flashing in the Programme Follow-up indicator to show that the machine has been switched to the pause mode.

Also, when the loading door is ready to be opened, Loading Door light will also illuminate continuously in addition to the programme step light.

#### Changing the auxiliary function, speed and temperature

Depending on the step the programme has reached, you can cancel or select the auxiliary functions. See, "Auxiliary function selection".

You can also change the speed and temperature settings. See, "Spin speed selection" and "Temperature selection".



If no change is allowed, the relevant light will flash 3 times.

#### Adding or taking out laundry

1. Press Start / Pause button to switch the machine to pause mode. The programme follow-up light of the relevant step during which the machine was switched into the pause mode will flash.
2. Wait until the Loading Door can be opened.
3. Open the Loading Door and add or take out the laundry.
4. Close the Loading Door.
5. Make changes in auxiliary functions, temperature and speed settings if necessary.
6. Press Start / Pause button to start the machine.

### 4.3.16 Cancelling the programme

To cancel the programme, turn the Programme Selection knob to select another programme. Previous programme will be cancelled. End / Cancel light will flash continuously to notify that the programme has been canceled.

Your machine will end the programme when you turn the Programme Selection knob; however, it does not drain the water inside. When you select and start a new programme, the newly selected programme will start depending on the step the previous programme was canceled in. For example, it may take in additional water or continue to wash with the water inside.



Depending on the step where the programme was canceled in, you may have to put detergent and softener again for the programme you have selected anew.

### 4.3.17 End of programme

"End" appears on the display at the end of the programme.

1. Wait until the loading door light illuminates steadily.
2. Press On / Off button to switch off the machine.
3. Take out your laundry and close the loading door. Your machine is ready for the next washing cycle.

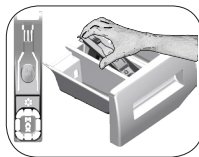
### 4.3.18 Your machine features "Standby Mode".

After you switch on your machine with On-Off button, if no programme is started or no other procedure is performed at the selection step or no action is taken within approx. 2 minutes after the selected programme ends, your machine will switch to energy saving mode automatically. The brightness of the indicator lights will decrease. Also, if your product has a display that shows programme time, this display will be completely turned off. If you turn the Programme Selection knob or touch any button, lights and display will switch back to previous condition. The selections which you make when exiting from the energy efficiency may change. Please check the correctness of your selections before starting the programme. If necessary, please make your settings again. This is not an error.

## 4.4 Maintenance and cleaning

Service life of product extends and frequently experienced problems will be reduced if it is cleaned at regular intervals.

### 4.4.1 Cleaning the detergent drawer



Clean the detergent drawer at regular intervals (every 4-5 washing cycles) as shown below in order to prevent accumulation of powder detergent in time.

Lift the rear part of the siphon to remove it as illustrated.

If more than normal amount of water and softener mixture starts to gather in the softener compartment, the siphon must be cleaned.

- 1 Press the dotted point on the siphon in the softener compartment and pull towards you until the compartment is removed from the machine.
- 2 Wash the detergent drawer and the siphon with plenty of lukewarm water in a washbasin. In order to prevent the residues to contact your skin, clean it with an appropriate brush by wearing a pair of gloves.
- 3 Insert the drawer back into its place after cleaning and make sure that it is seated well.

### 4.4.2 Cleaning the loading door and the drum

For products with drum cleaning programme, please see Operating the product - Programmes.



Repeat Drum Cleaning process in every 2 months.

Use an detergent / anti-limescale suitable for the washing machines.



After every washing make sure that no foreign substance is left in the drum. If the holes on the bellow shown in the figure is blocked, open the holes using a toothpick.

Foreign metal substances will cause rust stains in the drum. Clean the stains on the drum surface by using cleaning agents for stainless steel.

Never use steel wool or wire wool. These will damage the painted, chromated and plastic surfaces.

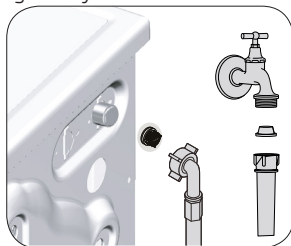
### 4.4.3 Cleaning the body and control panel

Wipe the body of the machine with soapy water or non-corrosive mild gel detergents as necessary, and dry with a soft cloth.

Use only a soft and damp cloth to clean the control panel.

### 4.4.4 Cleaning the water intake filters

There is a filter at the end of each water intake valve at the rear of the machine and also at the end of each water intake hose where they are connected to the tap. These filters prevent foreign substances and dirt in the water to enter the washing machine. Filters should be cleaned as they do get dirty.



1. Close the taps.
2. Remove the nuts of the water intake hoses to access the filters on the water intake valves. Clean them with an appropriate brush. If the filters are too dirty, remove them from their places with a pliers and clean in this way.
3. Take out the filters on the flat ends of the water intake hoses together with the gaskets and clean thoroughly under running water.
4. Replace the seals and filters carefully and tighten their nuts by hand.

#### 4.4.5 Draining remaining water and cleaning the pump filter

The filter system in your machine prevents solid items such as buttons, coins and fabric fibers clogging the pump impeller during discharge of washing water. Thus, the water will be discharged without any problem and the service life of the pump will extend.

If the machine fails to drain water, the pump filter is clogged. Filter must be cleaned whenever it is clogged or in every 3 months. Water must be drained off first to clean the pump filter.

In addition, prior to transporting the machine (e.g., when moving to another house) and in case of freezing of the water, water may have to be drained completely.



**CAUTION:** Foreign substances left in the pump filter may damage your machine or may cause noise problem.

**CAUTION:** If the product is not being used, shut the tap shut, remove mains pipe and drain the water inside the machine against any likely freezing.

**CAUTION:** After each use, turn off the water tap to which the mains hose is connected.

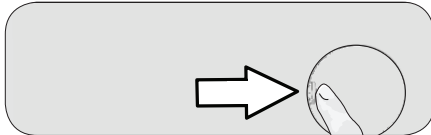
#### In order to clean the dirty filter and discharge the water:

1 Unplug the machine to cut off the supply power.



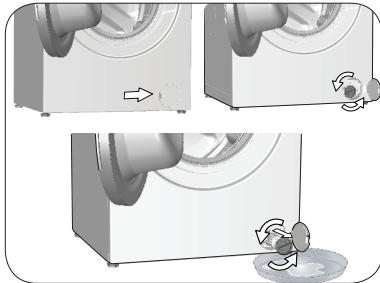
**CAUTION:** Temperature of the water inside the machine may rise up to 90 °C. To avoid the burning risk, clean the filter after the water inside the machine is cooled down.

2. Open the filter cover.



3 Follow the below procedures in order to drain water.

**The product does not have an emergency water drain hose, in order to drain the water:**



- In order to collect the water to flow out of the filter, place a large vessel in front of the filter.
- Turn and loosen the pump filter until water starts to flow (counterclockwise). Fill the flowing water into the container you have placed in front of the filter. Always keep a piece of cloth handy to absorb any spilled water.
- When the water inside the machine is finished, take out the filter completely by turning it.

4. Clean any residues inside the filter as well as fibers, if any, around the pump impeller region.

5. Replace the filter.

6. If the filter cap is composed of two pieces, close the filter cap by pressing on the tab. If it is one piece, seat the tabs in the lower part into their places first, and then press the upper part to close.




## 5 Troubleshooting

Problem	Reason	Solution
Program does not start after closing the door.	Start / Pause / Cancel button was not pressed.	<ul style="list-style-type: none"> <li>* Press the Start / Pause / Cancel button.</li> </ul>
	It may be difficult to close the loading door in case of excessive loading.	<ul style="list-style-type: none"> <li>Reduce the amount of laundry and make sure that the loading door is closed properly.</li> </ul>
Programme cannot be started or selected.	Washing machine has switched to self protection mode due to a supply problem (line voltage, water pressure, etc.).	<ul style="list-style-type: none"> <li>To cancel the programme, turn the Programme Selection knob to select another programme. Previous programme will be canceled. (see. "Cancellation of program")</li> </ul>
Water in the machine.	Some water might have remained in the product due to the quality control processes in the production.	<ul style="list-style-type: none"> <li>This is not a failure; water is not harmful to the machine.</li> </ul>
The machine enters standby mode after the programme starts or it does not take in water.	Tap is turned off.	<ul style="list-style-type: none"> <li>Turn on the taps.</li> </ul>
	Water inlet hose is bent.	<ul style="list-style-type: none"> <li>Flatten the hose.</li> </ul>
	Water inlet filter is clogged.	<ul style="list-style-type: none"> <li>Clean the filter.</li> </ul>
	Loading door may be open.	<ul style="list-style-type: none"> <li>Close the door.</li> </ul>
	The water connection may be wrong or water may be cut off (When the water is cut off, washing or rinsing LEDs flash).	<ul style="list-style-type: none"> <li>Check the water connection. If the water is cut off, press the Start/Pause key after the water has been supplied again to resume the operation from standby mode.</li> </ul>
Machine does not drain water.	Water drain hose might be clogged or twisted.	<ul style="list-style-type: none"> <li>Clean or flatten the hose.</li> </ul>
	Pump filter is clogged.	<ul style="list-style-type: none"> <li>Clean the pump filter.</li> </ul>
Machine vibrates or makes noise.	Machine might be standing unbalanced.	<ul style="list-style-type: none"> <li>Adjust the feet to level the machine.</li> </ul>
	A hard substance might have entered into the pump filter.	<ul style="list-style-type: none"> <li>Clean the pump filter.</li> </ul>
	Transportation safety bolts are not removed.	<ul style="list-style-type: none"> <li>Remove the transportation safety bolts.</li> </ul>
	Laundry quantity in the machine might be too little.	<ul style="list-style-type: none"> <li>Add more laundry to the machine.</li> </ul>
	Machine might be overloaded with laundry.	<ul style="list-style-type: none"> <li>Take out some of the laundry from the machine or distribute the load by hand to balance it homogenously in the machine.</li> </ul>
There is water leaking from the bottom of the washing machine.	Water drain hose might be clogged or twisted.	<ul style="list-style-type: none"> <li>Clean or flatten the hose.</li> </ul>
	Pump filter is clogged.	<ul style="list-style-type: none"> <li>Clean the pump filter.</li> </ul>
Machine stopped shortly after the programme started.	Machine might have stopped temporarily due to low voltage.	<ul style="list-style-type: none"> <li>It will resume running when the voltage restores to the normal level.</li> </ul>
Machine directly discharges the water it takes in.	Draining hose might not be at adequate height.	<ul style="list-style-type: none"> <li>Connect the water draining hose as described in the operation manual.</li> </ul>
No water can be seen in the machine during washing.	The water level is not visible from outside of the washing machine.	<ul style="list-style-type: none"> <li>This is not a failure.</li> </ul>
Loading door cannot be opened.	Door lock is activated because of the water level in the machine.	<ul style="list-style-type: none"> <li>Drain the water by running the Pump or Spin programme.</li> </ul>
	Machine is heating up the water or it is at the spinning cycle.	<ul style="list-style-type: none"> <li>Wait until the programme completes.</li> </ul>
	Child lock is engaged. Door lock will be deactivated a couple of minutes after the programme has come to an end.	<ul style="list-style-type: none"> <li>Wait for a couple of minutes for deactivation of the door lock.</li> </ul>
	Loading door may be stuck because of the pressure it is subjected to.	<ul style="list-style-type: none"> <li>Grab the handle and push and pull the loading door to release and open it.</li> </ul>

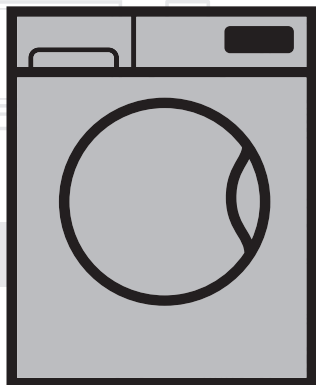
<b>Problem</b>	<b>Reason</b>	<b>Solution</b>
Washing takes longer time than specified in the manual.(*)	Water pressure is low.	<ul style="list-style-type: none"> <li>Machine waits until taking in adequate amount of water to prevent poor washing quality due to the decreased amount of water. Therefore, the washing time extends.</li> </ul>
	Voltage might be low.	<ul style="list-style-type: none"> <li>Washing time is prolonged to avoid poor washing results when the supply voltage is low.</li> </ul>
	Input temperature of water might be low.	<ul style="list-style-type: none"> <li>Required time to heat up the water extends in cold seasons. Also, washing time can be lengthened to avoid poor washing results.</li> </ul>
	Number of rinses and/or amount of rinse water might have increased.	<ul style="list-style-type: none"> <li>Machine increases the amount of rinse water when good rinsing is needed and adds an extra rinsing step if necessary.</li> </ul>
	Excessive foam might have occurred and automatic foam absorption system might have been activated due to too much detergent usage.	<ul style="list-style-type: none"> <li>Use recommended amount of detergent.</li> </ul>
Programme time does not countdown. (On models with display) (*)	Timer may stop during water intake.	<ul style="list-style-type: none"> <li>Timer indicator will not countdown until the machine takes in adequate amount of water. The machine will wait until there is sufficient amount of water to avoid poor washing results due to lack of water. Timer indicator will resume countdown after this.</li> </ul>
	Timer may stop during heating step.	<ul style="list-style-type: none"> <li>Timer indicator will not countdown until the machine reaches the selected temperature.</li> </ul>
	Timer may stop during spinning step.	<ul style="list-style-type: none"> <li>Automatic unbalanced load detection system might be activated due to the unbalanced distribution of the laundry in the drum.</li> </ul>
Programme time does not countdown. (*)	There might be unbalanced load in the machine.	<ul style="list-style-type: none"> <li>Automatic unbalanced load detection system might be activated due to the unbalanced distribution of the laundry in the drum.</li> </ul>
Machine does not switch to spinning step. (*)	There might be unbalanced load in the machine.	<ul style="list-style-type: none"> <li>Automatic unbalanced load detection system might be activated due to the unbalanced distribution of the laundry in the drum.</li> </ul>
	The machine will not spin if water is not drained completely.	<ul style="list-style-type: none"> <li>Check the filter and the draining hose.</li> </ul>
	Excessive foam might have occurred and automatic foam absorption system might have been activated due to too much detergent usage.	<ul style="list-style-type: none"> <li>Use recommended amount of detergent.</li> </ul>
Washing performance is poor: Laundry turns gray. (**)	Insufficient amount of detergent has been used over a long period of time.	<ul style="list-style-type: none"> <li>Use the recommended amount of detergent appropriate for water hardness and the laundry.</li> </ul>
	Washing was made at low temperatures for a long time.	<ul style="list-style-type: none"> <li>Select the proper temperature for the laundry to be washed.</li> </ul>
	Insufficient amount of detergent is used with hard water.	<ul style="list-style-type: none"> <li>Using insufficient amount of detergent with hard water causes the soil to stick on the cloth and this turns the cloth into gray in time. It is difficult to eliminate graying once it happens. Use the recommended amount of detergent appropriate for water hardness and the laundry.</li> </ul>
	Too much detergent is used.	<ul style="list-style-type: none"> <li>Use the recommended amount of detergent appropriate for water hardness and the laundry.</li> </ul>
Washing performance is poor: Stains persist or the laundry is not whitened. (**)	Insufficient amount of detergent is used.	<ul style="list-style-type: none"> <li>Use the recommended amount of detergent appropriate for water hardness and the laundry.</li> </ul>
	Excessive laundry was loaded in.	<ul style="list-style-type: none"> <li>Do not load the machine in excess. Load with amounts recommended in the "Programme and consumption table".</li> </ul>
	Wrong programme and temperature were selected.	<ul style="list-style-type: none"> <li>Select the proper programme and temperature for the laundry to be washed.</li> </ul>
	Wrong type of detergent is used.	<ul style="list-style-type: none"> <li>Use original detergent appropriate for the machine.</li> </ul>
	Too much detergent is used.	<ul style="list-style-type: none"> <li>Put the detergent in the correct compartment. Do not mix the bleaching agent and the detergent with each other.</li> </ul>

<b>Problem</b>	<b>Reason</b>	<b>Solution</b>
Washing performance is poor: Oily stains appeared on the laundry. (**)	Regular drum cleaning is not applied.	<ul style="list-style-type: none"> <li>• Clean the drum regularly. For this, please see 4.4.2.</li> </ul>
Washing performance is poor: Clothes smell unpleasantly. (**)	Odours and bacteria layers are formed on the drum as a result of continuous washing at lower temperatures and/or in short programmes.	<ul style="list-style-type: none"> <li>• Leave the detergent drawer as well as the loading door of the machine ajar after each washing. Thus, a humid environment favorable for bacteria cannot occur in the machine.</li> </ul>
Colour of the clothes faded. (**)	Excessive laundry was loaded in.	<ul style="list-style-type: none"> <li>• Do not load the machine in excess.</li> </ul>
	Detergent in use is damp.	<ul style="list-style-type: none"> <li>• Keep detergents closed in an environment free of humidity and do not expose them to excessive temperatures.</li> </ul>
	A higher temperature is selected.	<ul style="list-style-type: none"> <li>• Select the proper programme and temperature according to the type and soiling degree of the laundry.</li> </ul>
It does not rinse well.	The amount, brand and storage conditions of the detergent used are inappropriate.	<ul style="list-style-type: none"> <li>• Use a detergent appropriate for the washing machine and your laundry. Keep detergents closed in an environment free of humidity and do not expose them to excessive temperatures.</li> </ul>
	Detergent is put in the wrong compartment.	<ul style="list-style-type: none"> <li>• If detergent is put in the prewash compartment although prewash cycle is not selected, machine can take this detergent during rinsing or softener step. Put the detergent in the correct compartment.</li> </ul>
	Pump filter is clogged.	<ul style="list-style-type: none"> <li>• Check the filter.</li> </ul>
	Drain hose is folded.	<ul style="list-style-type: none"> <li>• Check the drain hose.</li> </ul>
Laundry became stiff after washing. (**)	Insufficient amount of detergent is used.	<ul style="list-style-type: none"> <li>• Using insufficient amount of detergent for the water hardness can cause the laundry to become stiff in time. Use appropriate amount of detergent according to the water hardness.</li> </ul>
	Detergent is put in the wrong compartment.	<ul style="list-style-type: none"> <li>• If detergent is put in the prewash compartment although prewash cycle is not selected, machine can take this detergent during rinsing or softener step. Put the detergent in the correct compartment.</li> </ul>
	Detergent might be mixed with the softener.	<ul style="list-style-type: none"> <li>• Do not mix the softener with detergent. Wash and clean the dispenser with hot water.</li> </ul>
Laundry does not smell like the softener. (**)	Detergent is put in the wrong compartment.	<ul style="list-style-type: none"> <li>• If detergent is put in the prewash compartment although prewash cycle is not selected, machine can take this detergent during rinsing or softener step. Wash and clean the dispenser with hot water. Put the detergent in the correct compartment.</li> </ul>
	Detergent might be mixed with the softener.	<ul style="list-style-type: none"> <li>• Do not mix the softener with detergent. Wash and clean the dispenser with hot water.</li> </ul>
Detergent residue in the detergent drawer. (**)	Detergent is put in wet drawer.	<ul style="list-style-type: none"> <li>• Dry the detergent drawer before putting in detergent.</li> </ul>
	Detergent has gotten damp.	<ul style="list-style-type: none"> <li>• Keep detergents closed in an environment free of humidity and do not expose them to excessive temperatures.</li> </ul>
	Water pressure is low.	<ul style="list-style-type: none"> <li>• Check the water pressure.</li> </ul>
	The detergent in the main wash compartment got wet while taking in the prewash water. Holes of the detergent compartment are blocked.	<ul style="list-style-type: none"> <li>• Check the holes and clean if they are clogged.</li> </ul>
	There is a problem with the detergent drawer valves.	<ul style="list-style-type: none"> <li>• Call the Authorised Service Agent.</li> </ul>
	Detergent might be mixed with the softener.	<ul style="list-style-type: none"> <li>• Do not mix the softener with detergent. Wash and clean the dispenser with hot water.</li> </ul>
	Regular drum cleaning is not applied.	<ul style="list-style-type: none"> <li>• Clean the drum regularly. For this, please see 4.4.2.</li> </ul>

Problem	Reason	Solution
Too much foam forms in the machine. (**)	Improper detergents for the washing machine are being used.	• Use detergents appropriate for the washing machine.
	Excessive amount of detergent is used.	• Use only sufficient amount of detergent.
	Detergent was stored under improper conditions.	• Store detergent in a closed and dry location. Do not store in excessively hot places.
	Some meshed laundry such as tulle may foam too much because of their texture.	• Use smaller amounts of detergent for this type of item.
	Detergent is put in the wrong compartment.	• Put the detergent in the correct compartment.
Foam is overflowing from the detergent drawer.	Softener is being taken early.	• There may be problem in the valves or in the detergent dispenser. Call the Authorised Service Agent.
	Too much detergent is used.	• Mix 1 tablespoonful softener and ½ l water and pour into the main wash compartment of the detergent drawer. • Put detergent into the machine suitable for the programmes and maximum loads indicated in the "Programme and consumption table". When you use additional chemicals (stain removers, bleachs and etc), reduce the amount of detergent.
Laundry remains wet at the end of the programme. (*)	Excessive foam might have occurred and automatic foam absorption system might have been activated due to too much detergent usage.	• Use recommended amount of detergent.
(*) Machine does not switch to spinning step when the laundry is not evenly distributed in the drum to prevent any damage to the machine and to its surrounding environment. Laundry should be rearranged and re-spun.		
(**) Regular drum cleaning is not applied. Clean the drum regularly. See 4.4.2		
	<b>CAUTION:</b> If you cannot eliminate the problem although you follow the instructions in this section, consult your dealer or the Authorised Service Agent. Never try to repair a nonfunctional product yourself.	

# Pralni stroj

## Uporabniški priročnik



WTE 7612 BS

SL

Številka dokumenta= 2820526129\_SL / 11-09-17.(14:45)

**beko**



Ta izdelek je bil proizveden z uporabo najnovejše tehnologije v okolju prijaznih pogojih.

---

# 1 Splošna varnostna navodila

V ten delu so opisana varnostna navodila za zaščito pred tveganji telesnih poškodb in materialne škode. Neupoštevanje teh navodil pomeni izničenje vsakršnega jamstva.

## 1.1 Življenjska in premoženjska varnost

- ▶ Proizvoda nikoli ne postavite na tla, pokrita s preprogo, Zaradi pomanjkljivega pretoka zraka pod strojem se začnejo električni deli pregrevati. Nastopijo težave.
- ▶ Stroj, ki ni v uporabi, izklopite.
- ▶ Namestitvev in popravila lahko izvajajo le pooblašteni serviserji. Proizvajalec ne odgovarja za morebitno škodo, posledico dela, ki ga opravi nepooblaščen delavec.
- ▶ Cevi za dobavo in odjem vode je treba trdno pritrditi in prevetriti ter potrditi, da niso poškodovane. V nasprotnem primeru ustvarite nevarnost stekanja vode.
- ▶ Če je v stroju voda, ne odpirajte vrat za nalaganje perila in ne poskušajte zamenjati filtra. V nasprotnem primeru ustvarite nevarnost poplav in telesnih poškodb zaradi vroče vode.
- ▶ Blokirana vratca za nalaganje ne odpirajte na silo. Vratca lahko odprete nekaj minut po zaključku pranja. Z odpiranjem vratc za nalaganje na silo ustvarite nevarnost poškodb vratc in blokirnega mehanizma.
- ▶ Uporabljajte pralna sredstva, mehčalce in dodatke, primerne za avtomatske pralne stroje.
- ▶ Upoštevajte navodila na etiketah na perilu in na embalaži pralnega sredstva.

## 1.2 Varnost otrok

- ▶ Otroci, stari 8 let in več, ter osebe z zmanjšanimi fizičnimi, senzornimi ali duševnimi sposobnostmi ali s pomanjkljivim znanjem ali izkušnjami lahko napravo uporabljajo le pod nadzorom ali če so poučeni o varni uporabi izdelka in z njim povezanimi nevarnostmi. Otroci se ne smejo igrati z napravo. Otroci naj ne opravljajo čistilnih in vzdrževalnih del na napravi, razen, če jih kdo nadzoruje.
- ▶ Embalažni material je nevaren za otroke. Embalažni material shranite na varno mesto, kamor otroci nimajo dostopa.

- ▶ Električni proizvodi so nevarni za otroke. Preprečite otrokom dostop v bližino proizvoda, medtem ko obratuje. Ne dovolite otrokom, da se igrajo s proizvodom. Uporabite otroško ključavnico in tako preprečite otrokom poseganje v proizvod.
- ▶ Ne pozabite zapreti vratc za nalaganje, preden zapustite prostor, v katerem je nameščen proizvod.
- ▶ Hranite vsa pralna sredstva in dodatke na varnem mestu, kamor otroci nimajo dostopa ter zaprite pokrov vsebnika pralnega sredstva oziroma zatesnite embalažo pralnega sredstva.

### 1.3 Električna varnost

- ▶ V primeru kakršne koli okvare proizvoda ne uporabite, dokler okvare ne popravi pooblaščen serviser. Nevarnost električnega udara!
- ▶ Proizvod je oblikovan, tako da ponovno začne obratovati, ko se po izpadu ponovno vzpostavi napajanja. Če želite preklicati program, preberite poglavje Preklic programa.
- ▶ Priključite stroj v ozemljeno vtičnico, zaščiteno s 16 A varovalko. Poskrbite za ozemljeno namestitev, ki jo vzpostavi strokovno usposobljen električar. Naše podjetje ne odgovarja za poškodbe, ki nastanejo med uporabo proizvoda brez ozemljitve v skladu z lokalnimi predpisi.
- ▶ Proizvoda ni dovoljeno prati s curkom vode ali zlivanjem vode na proizvod. Nevarnost električnega udara!
- ▶ V nobenem primeru se ne dotikajte napajalnega kabla z mokrimi rokami. V nobenem primeru ne vlecite za kabel, ko želite izključiti napajanje; vedno z eno roko primite vtičnico, z drugo pa primite vtič in ga izvlecite.
- ▶ Stroj je treba pred namestitvijo, vzdrževanjem, čiščenjem in popravili obvezno izključiti.
- ▶ Če je napajalni kabel poškodovan, ga mora zamenjati proizvajalec, poprodajno osebje ali podobno usposobljena oseba (po možnosti električar) ali oseba, ki jo je pooblastil uvoznik, saj boste tako preprečili morebitna tveganja.

### 1.4 Varnost pred vročo površino



Med pranjem perila pri visokih temperaturah, se steklo vratc za nalaganje segreje. Zato naj se predvsem otroci med delovanjem pralnega stroja ne nahajajo v bližini vratc za nalaganje.



## 2 Pomembna navodila za okolje

### 2.1 Skladnost z direktivo OEE0



Ta izdelek je v skladu z direktivo EU OEE0 (2012/19/EU). Ta izdelek nosi oznako za odpadno električno in elektronsko opremo (OEE0).

Izdelek je bil proizveden z visokokakovostnimi deli in materiali, ki so primerni za ponovno uporabo in recikliranje. Zato izdelka ob koncu njegove življenjske dobe ne odstranite skupaj z običajnimi gospodinjskimi in drugimi odpadki. Odnosite ga na zbiralno mesto za recikliranje električne in elektronske opreme. Prosimo, da se glede najbližjih zbirnih mest posvetujete z lokalnimi oblastmi.

Skladnost z direktivo RoHS (omejevanje uporabe nekaterih nevarnih snovi):

Ta izdelek je v skladu z direktivo EU RoHS (2011/65/EU). Ne vsebuje nevarnih in prepovedanih materialov, ki so določeni v direktivi.

### 2.2 Podatki o embalaži

Embalaža je izdelana iz recikliranega materiala v skladu z našimi državnimi okoljevarstvenimi predpisi. Embalaže ne odstranite skupaj z gospodinjskimi ali ostalimi odpadki. Odnosite jih na zbiralna mesta za embalaže, ki so jih določile lokalne oblasti.

## 3 Pravilna uporaba

- Stroj je oblikovan in izdelan za uporabo v gospodinjstvih. Stroj ni primeren za uporabo v komercialne namene in druge nenačrtovane namene.
- Proizvod je dovoljeno uporabljati za pranje in izpiranje perila, ki je ustrezno označeno.
- Proizvajalec ne odgovarja za nepravilno uporabo ali prevoz.
- Tehnična življenjska doba stroja je 10 let. V tem obdobju vam bodo na voljo originalni rezervni deli za pravilno delovanje naprave.

## 4 Tehnične specifikacije

### Skladno z delegirano uredbo komisije (EU) št. 1061/2010

Ime dobavitelja ali blagovna znamka	Beko
Naziv modela	WTE 7612 BS
Nazivna kapaciteta (kg)	7
Razred energijske učinkovitosti/Razpon od A+++ (najvišja učinkovitost) do D (najnižja učinkovitost)	A+++
Letna poraba energije (kWh) <sup>(1)</sup>	173
Poraba energije standardnega programa bombaž pri 60 °C pri polni obremenitvi (kWh)	0,810
Poraba energije standardnega programa za pranje bombaža pri 60 °C pri delni napolnjenosti stroja (kWh)	0,670
Poraba energije standardnega programa bombaž pri 40 °C pri delni obremenitvi (kWh)	0,790
Poraba energije v izklopljenem načinu (W)	0,250
Poraba energije v načinu pripravljenost (W)	1,000
Letna poraba vode (l) <sup>(2)</sup>	9899
Razred učinkovitosti ožemanja/razpon od A (najvišja učinkovitost) do G (najnižja učinkovitost)	B
Najvišja hitrost centrifuge (vrt./min.)	1200
Preostala vsebnost vlage (%)	53
Standardni program za pranje bombaža <sup>(3)</sup>	Puuvillaeko 60°C ja 40°C
Čas trajanja standardnega programa bombaž pri 60 °C pri polni obremenitvi (min)	215
Trajanje programa standardnega programa za pranje bombaža pri 60 °C pri delni napolnjenosti stroja (min)	195
Čas trajanja standardnega programa bombaž pri 40 °C pri delni obremenitvi (min)	185
Trajanje časa pripravljenosti (min)	N/A
Emisije hrupa v zraku pri pranju/centrifugiranju (dB)	62/77
Vgrajeno	Non
Višina (cm)	84
Širina (cm)	60
Globina (cm)	49
Neto teža (±4 kg)	62
Enojni dotok vode/dvojni dotok vode	• / -
• Na voljo	
Električna poraba (V/Hz)	230 V / 50Hz
Skupni tok (A)	10
Skupna moč (W)	2200
Koda glavnega modela	9217

<sup>(1)</sup> Poraba energije temelji na 220 standardnih pralnih ciklih s programom za pranje bombaža pri 60 °C in 40 °C pri polni in delni napolnjenosti stroja in v načinu za nizko porabo energije. Dejanska poraba energije bo odvisna od načina uporabe naprave.

<sup>(2)</sup> Poraba vode temelji na 220 standardnih pralnih ciklih s programom za pranje bombaža pri 60 °C in 40 °C pri polni in delni napolnjenosti stroja. Dejanska poraba vode bo odvisna od načina uporabe naprave.

<sup>(3)</sup> »Standardni program za pranje bombaža pri 60 °C« in »Standardni program za pranje bombaža pri 40 °C« sta standardna programa za pranje, na katera se nanašajo podatki na energijski nalepki in podatkovni kartici. Programa sta primerna za pranje običajno umazanega bombažnega perila in sta najbolj učinkovita programa glede na kombinirano porabo energije in vode.

Pridržane pravice do sprememb tehničnih specifikacij z namenom izboljšati kakovosti proizvoda brez predhodnega obvestila.

## 4.1 Namestititev

- Namestititev pralnega stroja naročite pri lokalnem pooblaščenem serviserju.
- Priprava lokacije in napeljave za električno energijo, vodo in odpadno vodo na mestu postavitve so dolžnost in odgovornost kupca.
- Preverite in potrdite, da med potiskanjem stroja na mesto postavitve ali med čiščenjem niste zvili, stisnili ali zdrobili dovodne in odjemne vodne cevi ter električnega kabla.
- Namestititev in električne priključke naprave naj opravi pooblaščen serviser. Proizvajalec ne odgovarja za morebitne poškodbe, ki nastanejo med opravili, ki jih izvajajo nepooblaščenji delavci.
- Pred namestitvijo s prostim očesom pralni stroj preglejte in potrdite, da ni poškodovan. Če odkrijete poškodbe, stroja ne namestite. Poškodovani stroji so nevarni.

### 4.1.1 Primerno mesto za postavititev

- Napravo postavite na trda in ravna tla. Stroja ne postavljajte na preprogo z daljšimi nitmi ali podobne površine.
- Skupna teža pralnega stroja in sušilnika (naložena), postavljena eden na drugega, je približno 180 kg. Stroj postavite na trda in ravna tla z zadostno nosilnostjo.
- Stroja ne postavite na napajalni kabel.
- Stroja ne namestite na mesta, kjer temperatura pade pod 0 °C.
- Če pustite prostor ob straneh stroja, naj bi to zmanjšalo vibracije in hrup.
- Stroja ne postavite na rob ali na ploščad stopničaste površine.
- Ne polagajte virov toplote, kot so kuhalne plošče, likalniki, pečice itd., na pralni stroj in jih ne uporabljajte na izdelku.

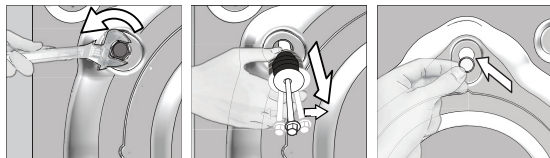
### 4.1.2 Odstranjevanje embalažnih ojačitev



Stroj nagnite nazaj in odstranite ojačitev. Povlecite za trak in odstranite embalažno ojačitev. Tega ne izvajajte sami.

### 4.1.3 Odstranjevanje varoval za prevoz in prenašanje

- 1 Z ustreznim ključem odvijte vse vijake, tako da se lahko neovirano vrtijo.
- 2 Odstranite vijake za zaščito med prevozom in prenašanjem, in sicer tako, da jih narahlo zavrtite.
- 3 V luknje na plošči zadaj vstavite plastične pokrove iz vrečke, v kateri je priročnik za uporabnika.



**POZOR:** Preden pralni stroj zaženete, odstranite vijake za zaščito med prevozom in prenašanjem! V nasprotnem primeru lahko pride do poškodbe naprave.



Vijake za zaščito med prevozom in prenašanjem shranite na varno mesto, tako da jih boste lahko uporabili, ko boste naslednjič premikali stroj.

Namestite vijake za zaščito med prevozom in prenašanjem v obratnem vrstnem redu demontaže.

Preden stroj premaknete na drugo mesto, obvezno pritrdite vijake za zaščito med prevozom in prenašanjem!

#### 4.1.4 Povezava dovodne cevi za vodo

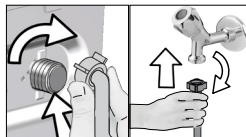


Vodni tlak, potreben za pravilno obratovanje stroja, je 1-10 barov (0,1-10 MPa). Za neovirano delovanje stroja mora v eni minuti iz odprte pipe steči 10-80 litrov vode. Če je vodni tlak višji, namestite reducirni ventil.



**POZOR:** Modele z enim dovodom za vodo ni dovoljeno povezati na pipe za toplo vodo. Nevarnost poškodb perila ali preklopa stroja v varen način, tj. stroj ne deluje.

**POZOR:** Na nov stroj ne povežite starih ali uporabljenih dovodnih cevi. Nevarnost pojava madežev na perilu.



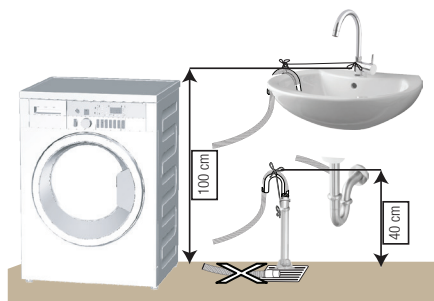
- 1 Z roko privijte matice na cevi. Matic ne privijajte z orodjem.
- 2 Potem ko napeljete cevi, odprite pipe do konca giba in potrdite, da spoji tesnijo. Če opazite uhajanje vode, zaprite pipe in odstranite matico. Preglejte tesnilo in ponovno privijte matico. Za zaščito pred uhajanjem vode in posledične škode zaprite pipe, ko stroja ne uporabljate.

#### 4.1.5 Povezava odtočne cevi na odtok

- Pritrdite konec odtočne cevi neposredno na odtok za odpadno vodo, stranišče ali kopalno kad.



**POZOR:** Nevarnost poplave v primeru izpada cevi iz ohišja med izpustom vode. Tudi nevarnost opeklin zaradi visokih temperatur med pranjem. Preprečite takšne situacije in poskrbite za neovirano dovajanje in odvajanje vode tako, da tesno pritrdite odtočno cev.



- Namestite odtočno cev na višino min. 40 cm in maks. 100 cm.
- Če odtočno cev dvignete po tem, ko je ležala na tleh ali v bližini tal (manj kot 40 cm nad tlemi), je odvajanje vode oteženo in perilo ostane po pranju preveč mokro. Zato upoštevajte višine, kot so označene na sliki.

- Za zaščito pred stekanjem onesnažene vode nazaj v stroj in za neoviran odjem takšne vode ne potopite končnega dela cevi v onesnaženo vodo in ne povežite v odtok več kot 15 cm cevi. Če je cev predolga, jo odrežite.
- Končnega dela cevi ni dovoljeno upogniti, nanj stopati in cev ne sme biti stisnjena ob odtok in stroj.
- Če je cev prekratka, dodajte originalni podaljšek. Maks. dovoljena dolžina cevi je 3,2 m. Povezavo med podaljškom cevi in odtočno cevjo stroja je treba dobro pritrditi z ustrežno objemko, tako da se ne more sneti in puščati.

## 4.1.6 Namestitev nogic



**POZOR:** Stroj mora stati uravnoteženo na nogicah, tako da obratuje tiho in brez vibracij. Uravnotežite stroj tako, da nastavite nogice. V nasprotnem primeru se stroj med obratovanjem premika - nevarnost stiskanja in vibracij.

**POZOR:** Blokirnih matic ne odvijajte z orodjem. Matica lahko poškodujete.

- 1 Z roko odvijte blokirne matice na nogicah.
- 2 Nastavite nogice, tako da stroj uravnotežite.
- 3 Z roko privijte vse blokirne matice.



## 4.1.7 Električna povezava

Priključite stroj v ozemljeno vtičnico, zaščiteno s 16 A varovalko. Naše podjetje ne odgovarja za poškodbe, ki nastanejo med uporabo proizvoda brez ozemljitve v skladu z lokalnimi predpisi.

- Povezava mora biti v skladu z veljavnimi državnimi predpisi.
- Ožičenje tokokroga električne vtičnice mora izpolnjevati zahteve naprave. Priporočamo uporabo prekinjevalca tokokroga GFCI.
- Poskrbite, da bo vtič napajalnega kabla po namestitvi dostopen brez težav.
- Če je vrednost toka varovalke ali prekinjala v ohišju manjša od 16 A, pokličite strokovno usposobljenega električarja, da namesti varovalko 16 A.
- Predpisana napetost v »Tehničnih specifikacijah« mora biti enaka omrežju napetosti.
- Povezav ni dovoljeno vzpostavljati s podaljški ali več vtiči.



**POZOR:** Poškodovane električne kable zamenja pooblaščen serveriser.

## 4.1.8 Prva uporaba



Pred prvo uporabo stroja preverite in potrdite, da ste ustrezno opravili vsa pripravljala dela po navodilih iz poglavij »Pomembna varnostna navodila« in »Namestitev«.

Stroj pripravite na pranje perila tako, da najprej zaženete program Čiščenje bobna. Če stroj ne vključuje tega programa, uporabite metodo, ki je opisana v razdelku 4.4.2.



Uporabljajte sredstvo za zaščito pred nastajanjem vodnega kamna, primerno za pralne stroje.

Po opravljenih procesih za nadzor kakovosti med proizvodnjo je morda v stroju ostala manjša količina vode. Ta voda ne predstavlja nevarnosti za stroj.

## 4.2 Priprava

### 4.2.1 Sortiranje perila

- \* Sortirajte perilo po vrsti tkanine, barvi, umazanosti ter dovoljeni temperaturi pranja.
- \* Obvezno upoštevajte navodila na etiketah na perilu.

### 4.2.2 Priprava perila za pranje

- Perilo s kovinskimi dodatki, kot so nedrčki z žico, pasne sponke in kovinski gumbi, lahko poškoduje stroj. Odstranite kovinske dele ali dajte perilo v pralne vrečke oziroma kar prevleko za vzglavnik.
- Spraznite žepe, vzemite ven kovance, svinčnike in sponke; žepe obrnite in jih očistite. Takšni predmeti lahko poškodujejo stroj in med pranjem ustvarjajo hrup.
- Za majhna oblačila, kot so otroške nogavice in najlon nogavice, uporabite pralno vrečko ali prevleko za vzglavnik.
- Zaveso položite v stroj brez tlačenja. Odstranite elemente za pritrditev zaves.
- Zaprite zadrgo, prišijite zrahljane gumbe in popravite razpoke in raztrge.
- Za oblačila, označena z oznako "strojno pranje" in "ročno pranje", nastavite ustrezen program pranja.
- Ne perite skupaj barvnega in belega perila. Nova in temna barvna oblačila spustijo barvo. Perite jih ločeno.
- Trdovratne madeže primerno obdelajte že pred pranjem. Če niste prepričani, se posvetujte s čistilnico.
- Uporabljajte samo barve/izdelke za spreminjanje barve in odstranjevanje vodnega kamna, ki so primerni za strojno pranje. Obvezno upoštevajte navodila na embalaži.
- Hlače in občutljiva perila pred pranjem obrnite na notranjo stran.
- Oblačila iz angora volne pred pranjem pustite nekaj ur v zamrzovalniku. Tako boste zmanjšali kosmatenje.
- Perilo, umazano z moko, prahom, mlekom v prahu itd., najprej močno otresite in šele nato naložite v stroj. Prah in praški na perilu se lahko čez čas nakopičijo v notranjih delih stroja in povzročijo škodo.

### 4.2.3 Ukrepi za varčevanje z energijo

Z upoštevanjem navodil v nadaljevanju boste zagotovili energijsko učinkovito in okolju manj škodljivo uporabo pralnega stroja.

- Stroj zaženite z maks. zmogljnostjo izbranega programa, vendar ne preobremenite; glej poglavje Preglednica programov in porabe. Glejte »Preglednica programov in porab«.
- Obvezno upoštevajte navodila na embalaži pralnega sredstva.
- Manj umazano perilo perite z nizkimi temperaturami.
- Za manjše količine manj umazanega perila nastavite programe hitrega pranja.
- Ne nastavite predpranja in visokih temperatur za pranje perila, ki ni zelo umazano ali zamazano.
- Če boste perilo posušili v sušilnem stroju, med pranjem izberite največjo priporočljivo hitrost centrifugiranja.
- Ne uporabljajte več pralnega sredstva, kot je priporočeno na embalaži.

### 4.2.4 Nalaganje perila

1. Odprite pokrov za perilo.
2. Nežno vstavite perilo v stroj.
3. Potisnite vratca za nalaganje, tako da zaslišite, kako se zaskočijo. Prepričajte se, da se oblačila niso zataknila v vratih. Medtem ko program teče, so vratca blokirana. Vratca lahko odprete nekaj minut po zaključku programa.

### 4.2.5 Ustrezna količina perila

Največja količina perila je odvisna od vrste perila, stopnje umazanosti in želenega programa pranja. Stroj samodejno nastavi količino vode glede na težo naloženega perila.

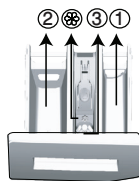


**POPOZORILO:** Upoštevajte informacije iz "Preglednice programov in porabe". Če naložite preveč perila in preobremenite stroj, so rezultati pranja slabši. Še več, stroj obratuje hrupno in vibrira.

## 4.2.6 Uporaba pralnega sredstva in mehčalca



Ob uporabi pralnega sredstva, mehčalca, škroba, barvila, belila ali sredstva za odstranjevanje vodnega kamna pozorno preberite navodila proizvajalca na embalaži in upoštevajte navodila za doziranje. Uporabite merilno čašo, če je na voljo.



Predal za pralno sredstvo sestavljajo trije predeli:

- (1) za predpranje
- (2 za glavno pranje
- (3) za mehčalec
- (☼) V predelku za mehčalec je tudi sifonski kos.

### Pralno sredstvo, mehčalec in druga čistilna sredstva

- Pralno sredstvo in mehčalec dodajte, preden zaženete program pranja.
  - Predal za pralno sredstvo mora biti med pranjem zaprt.
  - Če nastavite program brez predpranja, ne dodajte pralnega sredstva v predelek za predpranje (predelek št. "1").
  - Če nastavite program s predpranjem, ne dodajte tekočega pralnega sredstva v predelek za predpranje (predelek št. "1").
  - Če ste v boben naložili vrečko s pralnim sredstvom ali pralno kroglico, ne nastavite programa s predpranjem. Vrečko s pralnim sredstvom ali pralno kroglico dajte med perilo v stroju.
- Če uporabljate tekoče pralno sredstvo, ne pozabite dati lončka s tekočim pralnim sredstvom v predelek za pranje (predelek št. »2«).

### Vrsta pralnega sredstva

Vrsta pralnega sredstva je odvisna od vrste in barve tkanin.

- Za barvno perilo uporabljajte drugo vrsto pralnega sredstva kot za belo perilo.
- Občutljivo perilo perite s posebnimi pralnimi sredstvi (tekoče pralno sredstvo, šampon za volno itd.), ki so izdelana posebej za občutljivo perilo.
- Za pranje temnih oblačil in prešitih odev je priporočljiva uporaba tekočega pralnega sredstva.
- Volnena oblačila perite s pralnim sredstvom za volno.



**POZOR:** Uporabljajte le pralna sredstva, izdelana za uporabo v pralnih strojih.

**POZOR:** Ne uporabljajte milnih praškov.

### Nastavitev količine pralnega sredstva

Količina pralnega sredstva je odvisna od količine perila, umazanosti perila in trdote vode.

- Ne dozirajte več, kot velja priporočilo na embalaži pralnega sredstva; posledica nepravilnega doziranja so premočno penjenje, slabo izpiranje, stroškovna neučinkovitost in okolju škodljivo ravnanje.
- Za manjše količina perila ali ne zelo umazano perilo uporabite manj pralnega praška.

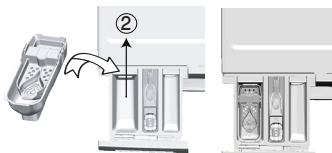
### Uporaba mehčalcev

Mehčalec dolijte v ustrezen predelek v predalu za pralno sredstvo.

- Ne vlijete nad oznako (> max <) v predelku za mehčalec.
- Mehčalec, ki ni več v tekočem stanju, razredčite z vodo, preden ga vlijete v predal za pralno sredstvo.

## Uporaba tekočih pralnih sredstev

Če je na voljo lonček za tekoče pralno sredstvo:



- Dajte lonček za tekoče pralno sredstvo v predelek št. »2«.
- Tekoče pralno sredstvo, ki ni več v tekočem stanju, razredčite z vodo, preden ga vlijete v predal za pralno sredstvo.

## Če ni lončka za tekoče pralno sredstvo:

- Ne uporabite tekočega pralnega sredstva za program s predpranjem.
- Tekoče pralno sredstvo lahko pusti madeže na oblačilih, v stanju, ko je vključena funkcija Zakasnitev zagona. Če načrtujete uporabo funkcije Zakasnitev zagona, ne uporabite tekočega pralnega sredstva.

## Uporaba pralnega sredstva v obliki gela ali tablete

- Če je gel zaradi svoje gostote v tekočem stanju in stroj ni opremljen s posebnim lončkom za tekoče pralno sredstvo, dolijte gel v predelek za pranje, in sicer med prvim dovajanjem vode. Če je stroj opremljen z lončkom za tekoče pralno sredstvo, vlijte gel v lonček, preden zaženete program.
- Gel, ki zaradi svoje gostote ni v tekočem stanju, ali gel v kapsuli, pred pranjem vstavite neposredno v boben.
- Pralno sredstvo v obliki tablet dajte pred pranjem v predelek za pranje (predelek št. "2") ali neposredno v boben.

## Uporaba apreture

- V predelek za mehčalec dodajte tekočo sodo, sodo v prahu ali barvilo. Mehčalca in škroba med pranjem ne uporabljajte skupaj. Po uporabi škroba notranjost naprave obrišite z vlažno in čisto krpo.

## Uporaba sredstev za odstranjevanje vodnega kamna

- Po potrebi uporabite sredstvo za odstranjevanje vodnega kamna, posebej izdelano za pralne stroje.

## Uporaba belil

Izberite program s predpranjem in dodajte belilno sredstvo, ko se zažene predpranje. V predel za predpranje ne dajte pralnega sredstva. Druga možnost je, da nastavite program z dodatnim izpiranjem in dodate belilno sredstvo, medtem ko stroj prejema vodo iz predelka za pralno sredstvo, tj. med prvim izpiranjem.

- Ne mešajte belilnega in pralnega sredstva.
- Uporabite le majhno količino (ok. 50 ml) belilnega sredstva in dobro izperite oblačila - tveganje draženja kože. Belila ne uporabljajte za barvnega oblačila in ga ne vlivajte na perilo.
- Če uporabljate belilno sredstvo na osnovi kisika, izberite program za pranje pri nizkih temperaturah.
- Belilno sredstvo na osnovi kisika se lahko uporablja skupaj s pralnim sredstvom; vendar, če nimata iste konsistence, v predelek za pralno sredstvo št. 2 v predalu za pralno sredstvo najprej dodajte pralno sredstvo in počakajte, da stroj izpere pralno sredstvo med dovajanjem vode v stroj. Medtem ko se voda dovaja v stroj, dodajte belilo v isti predelek.

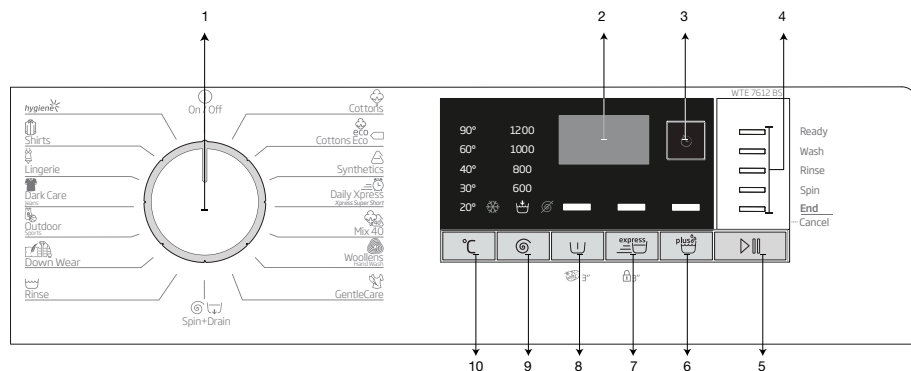


## 4.2.7 Nasveti za učinkovito pranje

		Oblačila			
		Svetle barve in belo perilo	Barve	Črna/temne barve	Občutljivo/volneno/svileno perilo
		(Priporočljive temperature glede stopnje umazanosti: 40-90 °C)	(Priporočljive temperature glede stopnje umazanosti: mrzlo -40 °C)	(Priporočljive temperature glede stopnje umazanosti: mrzlo -40 °C)	(Priporočljive temperature glede stopnje umazanosti: mrzlo -30 °C)
<b>Stopnja umazanosti</b>	<b>Močno umazano</b>  (trdovratni madeži kot so trava, kava, sadje in kri.)	Morda bo treba madeže predhodno obdelati ali vklopiti predpranje. Prah in tekoča pralna sredstva priporočljiva za belo perilo lahko uporabljate v enakih količinah kot za močno umazana oblačila. Za odstranjevanje blatnih madežev in madežev, ki so občutljivi na belilo, uporabljajte prah.	Prah in tekoča pralna sredstva priporočljiva za pisano perilo lahko uporabljate v enakih količinah kot za močno umazana oblačila. Za odstranjevanje blatnih madežev in madežev, ki so občutljivi na belilo, uporabljajte prah. Uporabite pralna sredstva brez belila.	Tekoča pralna sredstva priporočljiva za pisano in temno perilo lahko uporabljate v enakih količinah kot za močno umazana oblačila.	Tekoča pralna sredstva za občutljiva oblačila. Volnena in svilena oblačila perite s posebnimi pralnimi sredstvi za volno.
	<b>Običajno umazano</b> (Na primer madeži na ovratnikih in manšetah)	Prah in tekoča pralna sredstva priporočljiva za belo perilo lahko uporabljate v enakih količinah kot za običajno umazana oblačila.	Prah in tekoča pralna sredstva priporočljiva za pisano perilo lahko uporabljate v enakih količinah kot za običajno umazana oblačila. Uporabite lahko pralna sredstva, ki ne vsebujejo belila.	Tekoča pralna sredstva priporočljiva za pisano in temno perilo lahko uporabljate v enakih količinah kot za običajno umazana oblačila.	Tekoča pralna sredstva za občutljiva oblačila. Volnena in svilena oblačila perite s posebnimi pralnimi sredstvi za volno.
	<b>Manj umazano</b>  (Ni vidnih madežev.)	Prah in tekoča pralna sredstva priporočljiva za belo perilo lahko uporabljate v enakih količinah kot za manj umazana oblačila.	Prah in tekoča pralna sredstva priporočljiva za pisano perilo lahko uporabljate v enakih količinah kot za manj umazana oblačila. Uporabite lahko pralna sredstva, ki ne vsebujejo belila.	Tekoča pralna sredstva priporočljiva za pisano in temno perilo lahko uporabljate v enakih količinah kot za manj umazana oblačila.	Tekoča pralna sredstva za občutljiva oblačila. Volnena in svilena oblačila perite s posebnimi pralnimi sredstvi za volno.

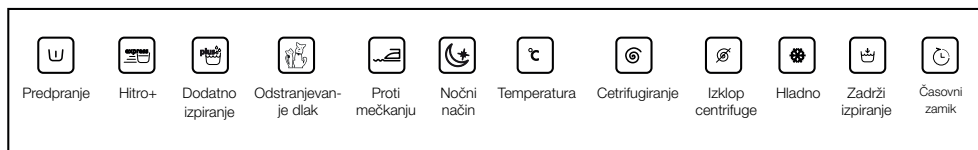
## 4.3 Uporaba proizvoda

### 4.3.1 Nadzorna plošča



- 1 - Gumb za izbiro programa (najvišji položaj Vkllop/Izklop)
- 2 - Zaslon
- 3 - Indikator zakasnitve zagona
- 4 - Indikator naslednjega programa
- 5 - Gumb za zagon/premor

- 6 - Gumb za dodatno funkcijo 3
- 7 - Gumb za dodatno funkcijo 2
- 8 - Gumb za dodatno funkcijo 1
- 9 - Gumb za nastavev hitrosti centrifugiranja
- 10 - Gumb za nastavev temperature



### 4.3.2 Priprava stroja

1. Zagotovite, da so vse cevi pravilno povezane in tesnijo.
2. Stroj priključite na napajanje.
3. Popolnoma odprite pipo za vodo.
4. Perilo vstavite v pralni stroj.
5. Dodajte pralno sredstvo in mehčalec.

### 4.3.3 Izбира programa in nasveti za učinkovito pranje

1. Izberite program, primeren za vrsto, količino, umazanost perila, kot je označeno v Preglednici programov in porabe in Preglednici temperature v nadaljevanju.
2. Z gumbom za izbiro programa izberite želeni program.

## 4.3.4 Preglednica programov in porabe

SL						Pomožna funkcija			
	Program	Največja obremenitev (kg)	Poraba vode (l)	Poraba energije (kWh)	Maks. hitrost***	Predpranje	Hitro	Dodatno izpiranje	Temperatura
Cottons	90	7	92	2,25	1200	•	•	•	Hladno-90
	60	7	92	1,70	1200	•	•	•	Hladno-90
	40	7	89	1,05	1200	•	•	•	Hladno-90
Cottons Eco	60**	7	51,1	0,81	1200				Hladno-60
	60**	3,5	40,4	0,67	1200				Hladno-60
	40**	3,5	40,4	0,79	1200				Hladno-60
Synthetics	60	3	65	1,20	1200	•	•	•	Hladno-60
	40	3	63	0,75	1200	•	•	•	Hladno-60
Daily Xpress / Xpress Super Short	90	7	62	2,00	1200		•	•	Hladno-90
	60	7	62	1,10	1200		•	•	Hladno-90
	30	7	60	0,20	1200		•	•	Hladno-90
Daily Xpress / Xpress Super Short + Hitro	30	2	41	0,15	1200		•	•	Hladno-30
Mix 40	40	3	65	0,75	800	•	•		Hladno-40
Woollens / Hand Wash	40	1,5	55	0,55	1200			•	Hladno-40
GentleCare	30	3	51	0,65	1200			•	Hladno-40
Down Wear	60	1,5	70	1,25	1000			•	Hladno-60
Outdoor / Sports	40	3	44	0,45	1200	•			Hladno-40
Dark Care / Jeans	40	2,5	82	0,85	1200	•		*	Hladno-40
Lingerie	30	1	65	0,30	600			*	Hladno-30
Shirts	60	3	55	1,20	800	•	•	•	Hladno-60
Hygiene	90	7	119	2,40	1200			*	20-90
Čiščenje bobna	90	-	73	2,10	600				90

• : Izbirno

\* : Samodejna izbira, ni možno preklicati.

\*\* : Program označevanja energije (EN 60456 Ed.3)

\*\*\*: Če je najvišja hitrost centrifugiranja manjša od te vrednosti, lahko izbirate le med hitrostmi do najv. hitrosti centrifugiranja.

- : Glejte opis programa za največjo dovoljeno obremenitev.



\*\* »Bombaž varčno 40 °C« in »Bombaž varčno 60 °C« sta standardna programa. Ta programa sta znana kot '40 °C bombažni standardni program' in '60 °C bombažni standardni program' in označena s simboli   na plošči.

Poraba vode in energije se lahko razlikuje predvsem zaradi tlaka vode, trdote in temperature vode, temperature okolja, vrste in količine perila, izbranih dodatnih funkcij in hitrosti centrifugiranja ter nihanja napajanja.

Na zaslonu stroja se izpiše čas pranja med izbiranjem programa. Odvisno od količine perila, ki ste ga naložili v stroj, lahko pride do razlike 1-1,5 ure med prikazanim časom pranja na zaslonu in dejanskim časom trajanja pranja. Čas trajanja pranja se samodejno posodobi hitro po začetku pranja.

Dodatne funkcije v preglednici se lahko razlikujejo glede na model stroja.

## Okvirne vrednosti za sintetične programe

	Teža (kg)	Poraba vode (l)	Poraba energije (kWh)	Trajanje programa (min) *	Preostala vsebnost vlage (%) ** ≤ 1000 rpm	Preostala vsebnost vlage (%) ** > 1000 rpm
Sintetika 60	3	65	1,20	115/140	45	40
Sintetika 40	3	63	0,75	115/140	45	40

\* Na zaslону stroja se izpišejo vsi časi pranja za izbran program. Manjše razlike med časom, prikazanim na zaslону, in resničnim časom pranja so normalen pojav.

\*\* Vrednosti preostale vsebnosti vlage se lahko razlikujejo glede na izbrano hitrost centrifugiranja.

### 4.3.5 Glavni programi

Uporabljajte glavne programe, ki ustrezajo vrsti tkanine.

#### • Cottons (Bombaž)

Ta program uporabite za pranje obstojnega bombažnega perila (rjuhe, posteljnino, brisače, kopalne plašče, spodnje perilo itd.). Ko pritisnete gumb za funkcijo hitrega pranja, se čas trajanja programa občutno skrajša, učinkovitost pranja pa je zagotovljena z intenzivnim pranjem. Če ne izberete funkcije hitrega pranja, se s tem znatno izboljša učinkovitost pranja in izpiranja močno umazanega perila.

#### • Synthetics (Sintetika)

Program nastavite za oblačila, kot so srajce, bluže, bombažna/sintetična mešana oblačila itd. Čas trajanja programa se občutno skrajša, pralni stroj pa pere z visoko učinkovitostjo. Če ne izberete funkcije hitrega pranja, se s tem znatno izboljša učinkovitost pranja in izpiranja močno umazanega perila.

#### • Woollens / Hand Wash (Volna/ročno pranje)

Uporabite za pranje volnenih/občutljivih oblačil. Izberite temperaturo, ki ustreza etiketam na perilu. Perilo bo oprano z zelo manjšo intenzivnostjo, ki ga ne bo poškodovala.



APPAREL CARE

»Program stroja za pranje volnenih oblačil je odobren s strani podjetja »The Woolmark Company« za pranje volnenih oblačil v pralnem stroju, pod pogojem, da se oblačila perejo v skladu z navodili na etiketi oblačila in navodili proizvajalca tega pralnega stroja. M1520«  
V VB, na Irskem, v Hongkongu in Indiji je blagovna znamka Woolmark overjena blagovna znamka.

### 4.3.6 Dodatni programi

Za posebne primere so na voljo dodatni programi.



Dodatni programi niso enaki na vseh modelih stroja.

#### • Cottons Eco (Eco za bombaž)

Uporabite za pranje običajno umazanega, trpežnega bombažnega in lanenega perila. Čeprav traja dlje kot vsi drugi programi, omogoča visok prihranek energije in vode. Dejanska temperatura vode se lahko razlikuje od navedene. Če v stroj naložite manj perila (npr. 1/2 zmogljivosti ali manj), se lahko čas programa samodejno skrajša. V tem primeru se bo poraba energije in vode še zmanjšala, kar pomeni še varčnejše pranje.

#### • Hygiene (Higiena)

Ta program traja dolgo časa in je namenjen za perilo, ki potrebuje higiensko pranje pri visokih temperaturah z intenzivnim in dolgim pranjem. Visoka stopnja higiene je zagotovljena zahvaljujoč dolgemu pranju ob visokih temperaturah in dodatnemu izpiranju.

- **GentleCare (Nežna nega)**

Program nastavite za pranje občutljivih oblačil, kot so bombažne/sintetične mešanice pletenin ali nogavic. Program pere s ciklusom blage intenzivnosti. Oblačila pri katerih želite ohraniti barvo perite na 20 stopinj ali pa izberite možnost hladnega pranja.

- **Daily Xpress / Xpress Super Short (Dnevno ekspres / Super kratko ekspres)**

Ta program je namenjen pranju manj umazanih bombažnih oblačil brez madežev v krajšem času. Ko izberete funkcijo hitrega pranja, se lahko trajanje programa zmanjša za do 14 minut. Ko izberete funkcijo hitrega pranja, lahko perete največ 2 (dva) kg perila.

- **Dark Care / Jeans (Temno perilo/kavbojke)**

Ta program uporabite za zaščito barve vaših temnih oblačil ali kavbojk. Program izvede visoko učinkovito pranje s posebnim delovanjem bobna tudi pri nizki temperaturi. Za temno perilo se priporoča uporaba tekočega pralnega sredstva ali sredstva za volno. Ne uporabite za pranje občutljivih oblačil, ki vsebujejo volno itd.

- **Mix 40 (Mešano 40)**

Uporabite za pranje skupaj oblačil iz bombaža in sintetike, ne da bi jih sortirali.

- **Shirts (Srajce)**

Ta program nastavite za pranje skupaj srajc iz bombaža, sintetike ali tkanin, mešanih s sintetiko. Zmanjša mečkanje. Če pritisnete tipko za funkcijo hitrega pranja, je algoritem predhodne obdelave izpuščen.

- Dodajte kemikalijo za predhodno obdelavo neposredno na oblačila ali pa jo dodajte skupaj s pralnim sredstvom, ko stroj začne jemati vodo iz glavnega predala za pranje. Tako lahko dobite isto učinkovitost kot pri običajnem pranju v zelo krajšem času. Življenjska doba uporabe vaših srajc se poveča.

- **Outdoor / Sports (Oblačila za zunaj / šport)**

Ta program lahko nastavite za pranje športnih oblačil in oblačil za zunaj, ki vsebujejo mešanico bombaža/sintetike in imajo površinsko plast, ki zagotavlja odpornost proti vodi, kot je gore-tex itd. Zagotavlja nežno pranje zahvaljujoč posebnim rotacijskim premikom bobna.

- **Lingerie (Fino perilo)**

Program nastavite za pranje občutljivih oblačil, ki so primerna za ročno pranje, in občutljivega ženskega spodnjega perila. V pralni mrežici lahko perete manjšo količino perila. Kaveljčki, gumbi itd. morajo biti zapeti, zadržke pa zaprte.

- **Down Wear (Vrhnja oblačila)**

Nastavite program za pranje plaščev, telovnikov, jaken itd., ki vsebujejo perje in so označena z etiketo »prati v stroju«. Zahvaljujoč posebnim profilom centrifugiranja voda zagotovo doseže zračne prostore med perjem.

#### 4.3.7 Posebni programi

Za specifično uporabo nastavite katerega koli od naslednjih programov.

- **Rinse (Izpiranje)**

Uporabite za ločeno izpiranje ali apretiranje perila.

- **Spin+Drain (Centrifugiranje+črpanje vode)**

Ta program uporabite za odstranjevanje vode z oblačil ali izčrpavanje vode iz stroja.

Preden nastavite program, izberite zeleno hitrost centrifugiranja in pritisnite gumb zagon/premor. Najprej iz stroja izteče voda. Nato stroj zažene centrifugiranje perila z nastavljenjo hitrostjo in sproti odvaja vodo.

Če želite le iztočiti vodo in ne zagnati centrifugiranja, nastavite program Črpaj+centrifugiraj in nato s pritiskom na gumb Nastavitev hitrosti centrifugiranja vključite funkcijo Ne centrifugiraj. Pritisnite gumb za zagon/premor.



Za občutljive tkanine uporabljajte manjšo hitrost centrifugiranja.

### 4.3.8 Izbira temperature

Potem ko nastavite nov program, se na indikatorju temperature označi temperatura, priporočena za izbrani program.

Če želite temperaturo zmanjšati, ponovno pritisnite na gumb za nastavev temperature. Označena temperatura pada postopoma. Lučke stopnje temperature se ne prižgejo, kot izberete hladno stopnjo.



Če program ne doseže faze ogrevanja, lahko temperaturo spremenite, ne da bi preklopili stroj v način Premor.

### 4.3.9 Izbira hitrosti centrifugiranja

Potem ko izberete nov program, se na zaslonu izpiše priporočena hitrost centrifugiranja za izbran program.

Če želite zmanjšati hitrost centrifugiranja, pritisnite na gumb Nastavev hitrosti centrifugiranja. Hitrost centrifugiranja se z vsakim pritiskom gumba zmanjša. Nato se, odvisno od modela, na zaslonu izpišeta možnosti »Zadrži izpiranje« in »Brez centrifugiranja«. Ko izberete možnost »Brez centrifugiranja«, se svetlobni indikatorji stopnje izpiranje ne prižgejo.

#### Zadrži izpiranje

Če perila ne boste vzeli iz pralnega stroja takoj, potem ko se program zaključí, vključite funkcijo za zadržanje izpiranja, tako da perilo ostane v vodi za zadnje izpiranje, kar pomeni, da se perilo ne bo zmečkalo, ko v stroju ne bo več vode. Po tem pritisnite na gumb zagon/premor, če želite izpustiti vodo brez centrifugiranja. Program se ponovno zažene in zaključí, potem ko voda izteče iz stroja.

Če želite zagnati centrifugo za perilo, ki stoji v vodi, nastavite hitrost centrifuge in pritisnite na gumb za zagon/premor.

Program se ponovno zažene. Sistem spusti vodo, ožame perilo in zaključí program.



Če program ne doseže faze centrifugiranja, lahko hitrost spremenite, ne da bi preklopili stroj v način Premor.

### 4.3.10 Izbira dodatne funkcije

Dodatne funkcije nastavite, preden zaženete program. Dodatne funkcije, ustrezne programu v teku, lahko izberete ali prekličete, ne da bi pritisnili na gumb zagon/premor, medtem ko stroj obratuje. Za takšno ukrepanje mora biti stroj v fazi obratovanja tik pred dodatno funkcijo, ki jo želite izbrati ali preklicati.

Če dodatne funkcije ni možno izbrati ali preklicati, uporabnika opozori svetlobni indikator zadevne dodatne funkcije tako, da 3-krat zasveti.



Če pred zagonom stroja izberete drugo dodatno funkcijo, ki ni združljiva s prvo dodatno funkcijo, sistem prekličé prvo izbrano funkcijo in vključi drugo izbrano dodatno funkcijo.

Dodatne funkcije, ki ni združljiva s programom, ni mogoče izbrati. (Glejte »Preglednica programov in porab«)

Gumbi za dodatne funkcije niso enaki na vseh modelih stroja.

#### 4.3.10.1 Dodatne funkcije

##### • Predpranje

Predpranje je smotno nastaviti samo za zelo umazano perilo. Brez predpranja boste prihranili energijo, vodo, pralno sredstvo in čas.



Predpranje brez pralnega sredstva se priporoča za til in zavese.

### • Hitro

Ko izberete to funkcijo, se trajanje ustreznih programov skrajša za 50 %. Zahvaljujoč optimiziranim korakom pranja, visokem strojnem delovanju in optimalni porabi vode je dosežena visoka učinkovitost pranja, kljub skrajšanem trajanju.



Ko vključite to funkcijo, naložite stroj do polovice najv. količine perila, kot je označena v preglednici programov.

### • Dodatno izpiranje

Ta funkcija omogoča, da stroj po glavnem pranju še enkrat izpere perilo. Tako lahko zmanjšate izpostavljenost občutljive kože (dojenčki, alergične osebe itd.) minimalnim ostankom pralnega sredstva na perilu.

## 4.3.10.2 Funkcije/programe izberete s pritiskom na gumb funkcij za 3 sekunde

### • Čiščenje bobna

Za izbiro programa pritisnite in držite gumb dodatne funkcije 1 za 3 sekunde.

Uporabite redno (enkrat v 1-2 mesecih) za čiščenje bobna in zagotavljanje potrebne higiene. Zaženi program, ko je stroj popolnoma prazen. Za boljše rezultate v predelek za pralno sredstvo št. 2 dodajte prašek za odstranjevanje vodnega kamna. Ob koncu programa pustite vrata priprta, da se notranjost stroja posuši.



To ni program pranja. To je program za vzdrževanje.

Programa ne vklopite, če stroj ni prazen. Če program kljub temu vklopite, bo stroj zaznal perilo v notranjosti in prekinil program.

### • Otroška ključavnica!

S funkcijo otroške ključavnice preprečite poseganje otrok v stroj. In tako preprečite spreminjanje izbranega programa.



Če zavrtite gumb za izbiro programa, ko je vklopljena otroška ključavnica, se na zaslonu prikaže »Con«. Otroška ključavnica zaščiti sistem pred kakršnimi koli spremembami programov in izbranih temperature, hitrosti in dodatnih funkcij.

Tudi če z izbirnim gumbom izberete drug program, medtem ko je vključena otroška ključavnica, se nadaljuje predhodno izbran program.

### Otroško ključavnico vključite:

2. Pritisnite in držite gumb za dodatno funkcijo 3 sekunde. Medtem ko za 3 sekunde držite pritisnjen gumb, se na zaslonu prikažejo »C03«, »C02«, »C01« v tem zaporedju. Nato se na zaslonu prikaže »Con«, ki nakazuje, da je vklopljena otroška ključavnica, medtem pa utripa gumb dodatne funkcije 2. Če medtem ko je vklopljena otroška zaščita pritisnete katerikoli gumb ali zavrtite gumb za izbiro programov, se bo na zaslonu prikazal enak napis.

### Otroško ključavnico izključite:

Med delovanjem programa pritisnite in držite gumb dodatne funkcije 2 za 3 sekunde. Medtem ko za 3 sekunde držite pritisnjen gumb, se na zaslonu prikažejo »C03«, »C02«, »C01« v tem zaporedju. Nato se na zaslonu prikaže »COF«, ki nakazuje, da je otroška ključavnica izklopljena, medtem pa utripa gumb dodatne funkcije 2.



Dodatno lahko otroško ključavnico izključite tako, da prestavite izbirni gumb v položaj vklop/izklop, medtem ko program teče, in izberite drug program.

Po izpadu elektrike ali izklopu naprave, se otroška ključavnica ne izklopi.

### 4.3.11 Zakasnitev zagona

S funkcijo nastavite zamik zagona za do 19 ur. Čas zakasnitve zagona se lahko poveča za 1 urne zamike.



Ko nastavite zakasnitev zagona, ne uporabite tekočega pralnega sredstva! Nevarnost obarvanja perila.

1. Odprite vratca za nalaganje, vstavite perilo v stroj in nalijte pralno sredstvo itd.
2. Izberite program pranja, temperaturo, hitrost centrifugiranja in po potrebi pomožne funkcije.
3. Nastavite željeni čas tako, da pritisnete na gumb za zakasnitev zagona.
4. Pritisnite gumb za zagon/premor. Na zaslonu se prikaže čas zakasnitve zagona, ki ste ga nastavili. Vklopi se odštevanje zakasnitve zaslona. Simbol " \_ " zraven časa zakasnitve zagona se pomika gor in dol po zaslonu.



V času zakasnitve zagona lahko naložite dodatno perilo.

5. Ob koncu odštevanja se prikaže trajanje izbranega programa. Simbol " \_ " bo izginil in vklopil se bo izbran program.

#### Sprememba časa zakasnitve zagona

Če med odštevanjem želite spremeniti čas:

1. Pritisnite na gumb za zakasnitev zagona. Vsakokrat, ko pritisnete gumb, se bo čas povešal za 1 uro.
2. Če želite zmanjšati čas zakasnitve zagona, pritisnite gumb za zakasnitev zagona dokler se na zaslonu ne prikaže želen čas zakasnitve zagona.

#### Preklic funkcije zakasnitve zagona

Če želite prekiniti zakasnitev zagona in takoj zagnati program:

1. Nastavite zakasnitev zaslona na nič ali zavrtite gumb za izbiro programa na katerikoli program. Sistem prekliče funkcijo zakasnitve zagona. Neprekinjeno utripa svetlobni indikator Končaj/Prekliči.
2. Nato izberite program, ki ga želite ponovno zagnati.
3. Za zagon programa pritisnite na gumb zagon/premor.

### 4.3.12 Zagon programa

1. Za zagon programa pritisnite na gumb zagon/premor.
2. Zasveti svetlobni indikator nadaljevanja programa, ki označi zagon programa.



Če se med izbiranjem programa 1 minuto ne zažene noben program ali v tem času ne pritisnete na nobenega gumba, se stroj preklopi v način Premor in zmanjša se raven svetilnosti svetlobnih indikatorjev temperature, hitrosti in vratc. Ostali svetlobni indikatorji in indikatorji ugasnejo. Ko zavrtite izbirni gumb ali pritisnete kateri koli gumb, svetlobni indikatorji in indikatorji ponovno zasvetijo.

### 4.3.13 Napredovanje programa

Napredovanje teka programa lahko spremljate na indikatorju sledenja programa. Na začetku vsake faze programa zasveti zadevni svetlobni indikator in ugasne svetlobni indikator zaključene faze. Dodatne funkcije, nastavitve hitrosti in temperature lahko spremenite, ne da bi ustavili potek programa med delovanjem. Sprememba, ki jo želite opraviti, mora biti v fazi za fazo programa v teku. Če sprememba ni združljiva, 3-krat zasvetijo ustrezni svetlobni indikatorji.



Če stroj ne opravi faze centrifugiranja, se zaradi neenakomerne porazdelitve perila v stroju lahko vključi funkcija za zadrževanje izpiranje ali avtomatski sistem zaznavanja neuravnotežene obremenitve.

### 4.3.14 Blokada vrat

Na vratcih za nalaganje perila je sistem za zaklepanje, ki onemogoči odpiranje vrat, če raven vode ni ustrezna.

Če stroj preklopiti v način Premor, začne utripati svetlobni indikator vratc za nalaganje. Stroj preveri raven vode. Če je raven ustrezna, začne v 1-2 minutah svetiti svetlobni indikator vratc za vstavljanje perila in lahko jih odprete.



Če raven ne ustreza, svetlobni indikator vratc za nalaganje ugasne in vratc ni možno odpreti. Če morate odpreti vrata za vstavljanje perila, medtem ko svetlobni indikator ne sveti, najprej preključite trenutni program. Glejte »Preklic programa«

#### 4.3.15 Sprememba izbire po zagonu programa

##### Preklop stroja v način za premor

Med tekom programa pritisnite gumb za zagon/premor in tako preklopite stroj v način premora. V indikatorju naslednjega programa začne utripati svetlobni indikator trenutne obratovalne faze, ki prikazuje, da se je stroj preklopil v način premora.

Ko se odklenejo vratca za nalaganje, svetlita svetlobna indikatorja programske faze in vratc za nalaganje.

##### Spreminjanje dodatne funkcije, hitrosti in temperature

Odvisno od faze programa v teku lahko preključete ali izberete dodatne funkcije. Glejte »Izbira dodatne funkcije«.

Prav tako lahko spremenite nastavitve hitrosti in temperature. Glejte »Hitrost centrifugiranja« in »Izbira temperature«.



Če spremembe niso možne, 3-krat zasvetijo zadevni svetlobni indikatorji.

##### Dodajanje ali jemanje perila iz stroja

1. Če želite preklopiti stroj v način premora, pritisnite na gumb zagon/premor. Utripati začne svetlobni indikator sledenja programa zadevne faze, med katero ste stroj preklopili v način premora.
2. Počakajte, dokler se vratca za vstavljanje perila ne odklenejo.
3. Odprite vrata za vstavljanje perila in dodajte ali vzemite ven perilo.
4. Zaprite vrata za vstavljanje perila.
5. Po potrebi spremenite nastavitve dodatnih funkcij, temperature in hitrosti.
6. Za zagon stroja pritisnite na gumb Zaženi/Postoj.

#### 4.3.16 Preklic programa

Program preključite tako, da zavrtite izbirni gumb na drug program. Sistem preključe predhodni program. Zasveti svetlobni indikator Konec/Preklic in opozori uporabnika, da se je izvršil preklic programa.

Ko zavrtite izbirni gumb, stroj zaključí program; kar pa ne pomeni, da iztoči vodo. Ko nastavite in zaženete nov program, se le-ta zažene, ustrezno fazi, v kateri ste preključali predhodni program, na primer sprejme dodatno količino vode ali nadaljuje pranje z obstoječo vodo.



Odvisno od faze, v kateri ste preključali program, ponovno dodajte pralno sredstvo in mehčalec za nov program, ki ste ga izbrali.

#### 4.3.17 Konec programa

Na koncu programa se na zaslonu prikaže »End«.

1. Počakajte, da zasveti svetlobni indikator vratc za nalaganje.
2. Za izklop naprave pritisnite gumb vklop/izklop.
3. Iz naprave vzemite perilo in zaprite vrata za vstavljanje perila. Naprava je pripravljena za naslednje pranje.

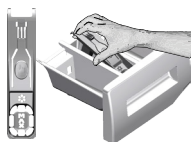
#### 4.3.18 Vaš stroj vključuje možnost načina stanja pripravljenosti »Standby Mode«.

Če se po tem, ko ste stroj vklopili z gumbom Vklop/Izklop, ne začne noben program ali čakate, da bi izvedel katero drugo dejanje, ali če ne izvedete nobenega drugega dejanja vsaj 2 minuti po koncu izbranega programa, se bo stroj samodejno preklopil v način prihranka energije. Svetlost svetlobnih indikatorjev se bo zmanjšala. Če je stroj opremljen z zaslonom, ki prikazuje trajanje programa, se bo ta zaslon popolnoma izklopil. Če med delovanjem obrnete gumb za izbiro programa ali se dotaknete katerega koli gumba, se bodo lučke in zaslon vrnili v prejšnje stanje. Nastavitve, ki jih boste izbrali ob izhodu iz načina prihranka energije, se lahko spremenijo. Preden zaženete program preverite, ali so vaše izbire ustrezne. Če je potrebno, nastavitve spremenite. To ni napaka.

## 4.4 Vzdrževanje in čiščenje

Tehnična življenjska doba stroja se podaljša in število pogostih težav se zmanjša, če stroj redno čistite.

### 4.4.1 Čiščenje predala za pralno sredstvo



Predal za pralno sredstvo redno čistite (na vsakih 4-5 pranj), kot je opisano v nadaljevanju, in tako preprečite kopičenje ostankov praška.

Da bi ga odstranili dvignite zadnji del sifona, kot prikazuje slika.

Če se v predelku za mehčalec nabira prekomerna količina mešanice vode in mehčalca, očistite sifon.

- 1 Pritisnite gumb s pikicami na sifonu v predelku za mehčalec in predelek izvlecite iz stroja.
- 2 Predal za pralno sredstvo in sifon operite v umivalniku z obilico mlačne vode. Med čiščenjem nosite zaščitne rokavice ali uporabite primerno krtačo, tako da se s kožo ne dotikate ostankov.
- 3 Potem ko predal očistite, ga namestite pravilno nazaj na mesto.

### 4.4.2 Čiščenje vrat za nalaganje in bobna

Za izdelke, ki so opremljeni s programom za čiščenje bobna glejte Upravljanje z izdelkom - programi.



Postopek za čiščenje bobna ponovite vsaka 2 meseca.

Uporabljajte sredstvo za zaščito pred nastajanjem vodnega kamna, primerno za pralne stroje.



Po vsakem pranju se prepričajte, da v bobnu ne ostanejo kakšne tuje snovi. Če so odprtine, ki so prikazane na spodnji sliki, zamašene, jih z zobortebcem odmašite.

Tuje kovinske snovi bodo povzročile madeže rje na bobnu. Madeže na bobnu očistite s sredstvi za čiščenje nerjavečega jekla.

Pri tem nikoli ne uporabljajte jeklene ali žične volne. S tem boste namreč poškodovali barvane, kromirane in plastične površine.

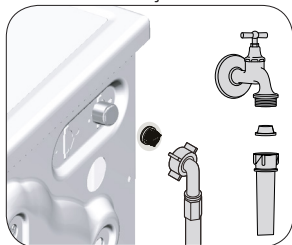
### 4.4.3 Čiščenje trupa in nadzorne plošče

Trup stroja po potrebi obrišite z vodo z milom ali blagimi čistilnimi sredstvi, ki ne povzročajo korozije, in ga posušite z mehko krpo.

Nadzorno ploščo očistite samo z mehko in vlažno krpo.

### 4.4.4 Čiščenje dovodnih filtrov

Na zadnji strani stroja je na koncu vsakega dovodnega ventila ter na koncu vsake dovodne cevi, ki je priključena na pipo, filter. Ti filtri preprečujejo prodor tujkov in umazanje iz vode v pralni stroj. Umazane filtre je treba očistiti.



- 1 Zaprite pipe.
- 2 Snemite matice dovodnih cevi, tako da odprete dostop do filtrov na dovodnih ventilih. Matice očistite z ustrezno krtačko. Če so filtri zelo umazani, jih s kleščami vzemite ven in očistite.
- 3 Odstranite filtre na ploski strani dovodnih cevi skupaj s tesnili ter jih očistite pod tekočo vodo.
- 4 Previdno ponovno namestite tesnila in filtre ter ročno privijte matice.

#### 4.4.5 Odjem morebitne preostale vode in čiščenje filtra črpalke

Filtrirni sitem v stroju zaščiti pogon črpalke pred trdimi predmeti, kot so gumbi, kovanci in delci tkanin, med odjemom vode. Tako je odjem vode neoviran in tehnična življenjska doba stroja se podaljša. Če se voda ne odvaja iz stroja, to pomeni, da je zamašen filter črpalke. Filter je treba očistiti vsake 3 mesece ali vsakokrat, ko se zamaši. Pred čiščenjem filtra črpalke je treba iztočiti vodo iz stroja. Vodo je treba iztočiti tudi pred prevozom in prenašanjem stroja (npr. selitev v drugo hišo) in v primeru, da voda zmrzne.



**POZOR:** Tujki, ki ostanejo v filtru črpalke, lahko poškodujejo stroj ali ustvarjajo hrup.

**POZOR:** Če stroja ne uporabljate, izklopite pipo, odstranite cev za dovod vode in izpraznite vodo, ki se nahaja v stroju, da preprečite nevarnost zmrzovanja.

**POZOR:** Po vsaki uporabi izklopite pipo, na katero je povezana cev za dovod vode.

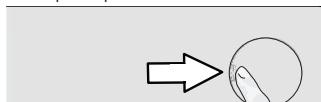
#### Če želite očistiti umazan filter in iztočiti vodo, upoštevajte naslednja navodila:

1. Izvlecite vtič in tako izključite napajanje.



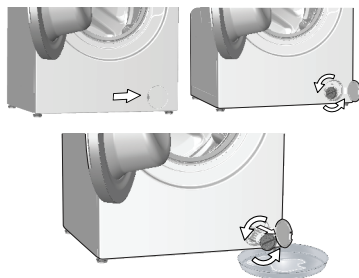
**POZOR:** Temperatura vode v stroju se lahko dvigne na 90 °C. Za zaščito pred opeklinami filter očistite, ko se voda v stroju ohladi.

2. Odprite pokrov filtra.



3. Za praznjenje vode upoštevajte spodnja navodila.

#### Če stroj ni opremljen z odjemno cevjo za ukrepanje v sili za praznjenje vode:



- Pred filter namestite večjo posodo, v katero se bo stekla voda iz filtra.
- Obrnite in odvijajte filter črpalke (v nasprotni smeri urnega kazalca), dokler voda ne začne iztekati. Vodo prestrezite v posodo, ki ste jo postavili pred filter. Polito vodo obrišete s krpo.
- Ko se izteče vsa voda, zavrtite filter do konca giba in ga vzemite ven.

4. Očistite ostanke v filtru in umazanijo okoli pogona črpalke.

5. Zamenjajte filter.


6. Če je filtrski pokrov sestavljen iz dveh kosov, pokrov zaprite tako, da pritisnete na jeziček. Če je pokrov iz enega kosa, najprej namestite jezička na mesto spodaj in nato pritisnite na zgornji del, tako da se pokrov zapre.

## 5 Odpravljanje težav

Težava	Vzrok	Rešitev
Program se ne začne, po tem, ko zaprete vrata.	Niste pritisnili gumba za začetek/premor/preklic. V primeru prevelike količine perila se lahko vratca za nalaganje težko zaprejo.	<ul style="list-style-type: none"> <li>• Pritisnite gumb za začetek/premor/preklic.</li> <li>• Zmanjšajte količino perila in preverite, ali so vratca za nalaganje pravilno zaprta.</li> </ul>
Programa ni možno zagnati ali izbrati.	Pralni stroj se je zaradi težave med dovajanjem (napetost, vodni tlak itd.) morda preklpil v način samodejne zaščite.	<ul style="list-style-type: none"> <li>• Program preključite tako, da zavrtnite izbirni gumb na drug program. Sistem preključe predhodni program. (glejte »Preklic programa«).</li> </ul>
Voda v stroju.	Po opravljenih procesih za nadzor kakovosti med proizvodnjo je morda v stroju ostala manjša količina vode.	<ul style="list-style-type: none"> <li>• Ne gre za napako; voda ne škoduje stroju.</li> </ul>
Stroj se preklpi v način pripravljenosti, ko se program začne ali ko v stroju ne doteka voda.	<p>Pipa je izklopljena. Dovodna cev je upognjena.</p> <p>Dovodna cev je zamašena. Vratc za nalaganje ni mogoče odpreti.</p> <p>Priključek za vodo je morda napačen ali pa je prekinjen dotok vode (ko je dovod vode prekinjen, lučke LED za pranje ali izpiranje utripajo).</p>	<ul style="list-style-type: none"> <li>• Odprite pipe.</li> <li>• Izravnajte cev.</li> <li>• Očistite filter.</li> <li>• Zaprite vratca.</li> <li>• Preverite priključek za vodo. Če je dotok vode prekinjen, pritisnite tipko za zagon/premor, ko je voda ponovno dovodena, da stroj nadaljuje z delovanjem.</li> </ul>
Voda v stroju se ne izprazni.	<p>Odočno cev je morda zamašena ali zavita. Filter črpalke je zamašen.</p>	<ul style="list-style-type: none"> <li>• Očistite ali izravnajte cev.</li> <li>• Očistite filter črpalke.</li> </ul>
Stroj vibrira oziroma obratuje hrupno.	<p>Stroj morda ni uravnoteženo postavljen. V filtru črpalke je morda trda snov. Varnostni vijaki za zaščito med prevozom in prenašanjem so še na mestu. V stroju je morda premajhna količina perila. Stroj je morda preobremenjen s perilom.</p> <p>Stroj je morda naslonjen ob trd element.</p>	<ul style="list-style-type: none"> <li>• Nastavite nogice, tako da stroj uravnotežite.</li> <li>• Očistite filter črpalke.</li> <li>• Odstranite varnostne vijake.</li> <li>• Naložite več perila.</li> <li>• Vzemite ven nekaj perila ali z roko porazdelite obremenitev, tako da ga enakomerno uravnotežite v stroju.</li> <li>• Preverite in potrdite, da se stroj na nič ne naslanja.</li> </ul>
Z dna stroja uhaja voda.	<p>Odočna cev je morda zamašena ali zavita. Filter črpalke je zamašen.</p>	<ul style="list-style-type: none"> <li>• Očistite ali izravnajte cev.</li> <li>• Očistite filter črpalke.</li> </ul>
Stroj se kmalu po zagonu programa zaustavi.	Stroj se je morda začasno zaustavil zaradi nizke napetosti.	<ul style="list-style-type: none"> <li>• Stroj se ponovno zažene, ko napetost vzpostavi normalno raven.</li> </ul>
Stroj neposredno prazni vodo, ki priteče vanj.	Odočna cev morda ni na ustrezni višini.	<ul style="list-style-type: none"> <li>• Priključite odočno cev, kot je opisano v navodilih za uporabo.</li> </ul>
Med pranjem v stroju ni vode.	Z zunanje strani pralnega stroja ni vidna raven vode.	<ul style="list-style-type: none"> <li>• To ni napaka.</li> </ul>
Vratc za nalaganje ni mogoče odpreti.	<p>Zaklep vrat je aktiviran zaradi ravni vode v stroju. Stroj segreva vodo ali pa je v ciklu centrifugiranja. Otroška zaščita je vklopljena. Zaklep vrat bo izklopljen nekaj minut po koncu programa. Vratca za nalaganje se lahko zaradi pritiska, ki so mu izpostavljena, zataknejo.</p>	<ul style="list-style-type: none"> <li>• Vodo izpraznite, tako da zaženete program za črpanje ali centrifugiranje.</li> <li>• Počakajte, da se program zaključi.</li> <li>• Počakajte nekaj minut, da se zaklep vrat izklopi.</li> <li>• Primitte ročaj in potisnite ter povlecite vratca za nalaganje, da se sprostijo, nato pa jih odprite.</li> </ul>
Pranje traja dlje, kot je določeno v priročniku.(*)	<p>Tlak vode je nizek. Morebitna nizka napetost. Vhodna temperatura vode je morebiti nizka. Poveča se lahko tudi število izpiranj in/ali količina vode za izpiranje. Zaradi prevelike količine pralnega sredstva se lahko pojavi premočno penjenje in vklopi se sistem samodejnega odstranjevanja pene.</p>	<ul style="list-style-type: none"> <li>• Stroj ne začne obratovati, dokler ni v njem zadostne količine vode, da prepreči slabe rezultate pranja zaradi pomanjkanja vode. Zato je čas pranja daljši.</li> <li>• Čas pranja je podaljšan za preprečitev slabih rezultatov pranja kot posledice nizke napajalne napetosti.</li> <li>• Čas za segrevanje vode je v hladni sezoni daljši. Tudi čas pranja je lahko daljši za preprečevanje slabih rezultatov pranja.</li> <li>• Ko je potrebno dobro izpiranje, stroj poveča količino vode za izpiranje ter po potrebi doda dodatni korak izpiranja.</li> <li>• Uporabljajte priporočeno količino pralnega sredstva.</li> </ul>

Težava	Vzrok	Rešitev
Programski čas se ne odšteva. (Na modelih z zaslonom) (*)	Merilnik časa se lahko zaustavi med dotokom vode.	• Indikator merilnika časa ne odšteva, dokler v stroj doteka ustrežna količina vode. Stroj ne začne obratovati, dokler ne zajame količine vodene, zadostne za zaščito pred slabimi rezultati pranja zaradi pomanjkanja vode. Po tem indikator merilnika časa ponovno zažene odštevanje.
	Merilnik časa se lahko zaustavi med fazo ogrevanja.	• Indikator merilnika časa ne odšteva, dokler stroj ne doseže nastavljenih temperature.
	Merilnik časa se lahko zaustavi med fazo centrifugiranja.	• Samodejni sistem zaznavanja neuravnotežene obremenitve se lahko vključi zaradi neuravnotežene porazdelitve perila v bobnu.
Programski čas se ne odšteva. (*)	Perilo v stroju je morebiti neuravnoteženo.	• Samodejni sistem zaznavanja neuravnotežene obremenitve se lahko vključi zaradi neuravnotežene porazdelitve perila v bobnu.
Stroj ne preklopi v fazo centrifugiranja. (*)	Perilo v stroju je morebiti neuravnoteženo.	• Samodejni sistem zaznavanja neuravnotežene obremenitve se lahko vključi zaradi neuravnotežene porazdelitve perila v bobnu.
	Stroj ne bo izvajal centrifugiranja, če voda v stroju ni popolnoma izpraznjena.	• Preverite filter in odtočno cev.
	Zaradi prevelike količine pralnega sredstva se lahko pojavi premočno penjenje in vklopi se sistem samodejnega odstranjevanja pene.	• Uporabljajte priporočeno količino pralnega sredstva.
Slabi rezultati pranja: Perilo se obarva sivo. (**)	Dlje časa ste uporabljali nezadostne količine pralnega sredstva.	• Uporabite priporočljivo količino pralnega sredstva za trdoto vode in perilo.
	Pranje je potekalo ob nizkih temperaturah dlje časa.	• Izberite ustrezno temperaturo za pranje določenega perila.
	Nezadostna količina pralnega sredstva za trdo vodo.	• Nezadostna količina pralnega sredstva pri trdi vodi povzroči, da madeži ostanejo na oblačilu, zaradi česar se oblačilo čez čas obarva sivo. Ko se pojavi sivina, jo je težko odpraviti. Uporabite priporočljivo količino pralnega sredstva za trdoto vode in perilo.
	Dodali ste preveliko količino pralnega sredstva.	• Uporabite priporočljivo količino pralnega sredstva za trdoto vode in perilo.
Slabi rezultati pranja: Madežev ni mogoče odpraviti ali pa perilo ni pobeljeno. (**)	Dodali ste premajhno količino pralnega sredstva.	• Uporabite priporočljivo količino pralnega sredstva za trdoto vode in perilo.
	Naložili ste prekomerno količino oblačil.	• V stroj ne nalagajte prekomerne količine oblačil. Naložite količine perila, priporočene v razdelku "Preglednice programov in porabe".
	Izbrali ste napačen program in temperaturo.	• Izberite ustrezen program in temperaturo za pranje določenega perila.
	Uporabili ste napačno vrsto pralnega sredstva.	• Uporabite originalno pralno sredstvo, ki ustreza stroju.
	Dodali ste preveliko količino pralnega sredstva.	• Pralno sredstvo dodajte v ustrezen predelek. Ne mešajte bellnega sredstva s pralnim sredstvom.
Slabi rezultati pranja: Na perilu so se pojavili oljni madeži. (**)	Bobna niste redno čistili.	• Redno čistite boben. Za to glejte 4.4.2.
Slabi rezultati pranja: Oblačila imajo neprijeten vonj. (**)	Zaradi rednega pranja ob nizkih temperaturah in/ali v kratkih programih, se na bobnu pojavijo vonjave in plasti bakterij.	• Po vsakem pranju pustite predal za pralno sredstvo in vrata za vstavljanje perila priprta. Tako se v stroju ne bo pojavilo vlažno okolje, ki privlači bakterije.
Barva perila je zbledela (**)	Naložili ste prekomerno količino oblačil.	• V stroj ne nalagajte prekomerne količine oblačil.
	Uporabili ste vlažno pralno sredstvo.	• Pralna sredstva shranjujte v okolju, ki ni vlažno, in jih ne izpostavljajte prekomernim temperaturam.
	Izbrali ste višjo temperaturo.	• Izberite ustrezen program in temperaturo glede na vrsto in umazanost perila.

<b>Težava</b>	<b>Vzrok</b>	<b>Rešitev</b>
Slabo izpiranje.	Neustrezna količina, znamka in pogoji shranjevanja uporabljenega pralnega sredstva.	<ul style="list-style-type: none"> <li>Uporabite ustrezno pralno sredstvo za pralni stroj in perilo. Pralna sredstva shranjujte v okolju, ki ni vlažno, in jih ne izpostavljajte prekomernim temperaturam.</li> </ul>
	Pralno sredstvo ste dodali v napačen predelek.	<ul style="list-style-type: none"> <li>Če pralno sredstvo dodate v predelek za predpranje, čeprav predpranja niste izbrali, bo stroj uporabil pralno sredstvo med izpiranjem ali mehčanjem. Pralno sredstvo dodajte v ustrezen predelek.</li> </ul>
	Filter črpalke je zamašen.	<ul style="list-style-type: none"> <li>Preverite filter.</li> </ul>
	Odočno cev je zvita.	<ul style="list-style-type: none"> <li>Preverite odočno cev.</li> </ul>
Perilo je po pranju postalo trdo. (**)	Dodali ste premajhno količino pralnega sredstva.	<ul style="list-style-type: none"> <li>Če ne uporabite dovolj pralnega sredstva za trdoto vodo, lahko perilo postane trdo. Uporabite priporočljivo količino pralnega sredstva za trdoto vode.</li> </ul>
	Pralno sredstvo ste dodali v napačen predelek.	<ul style="list-style-type: none"> <li>Če pralno sredstvo dodate v predelek za predpranje, čeprav predpranja niste izbrali, bo stroj uporabil pralno sredstvo med izpiranjem ali mehčanjem. Pralno sredstvo dodajte v ustrezen predelek.</li> </ul>
	Pralno sredstvo je morda pomešano z mehčalcem.	<ul style="list-style-type: none"> <li>Ne mešajte mehčalca s pralnim sredstvom. Predal za pralno sredstvo operite in očistite z vročo vodo.</li> </ul>
Perilo ne diši kot mehčalec. (**)	Pralno sredstvo ste dodali v napačen predelek.	<ul style="list-style-type: none"> <li>Če pralno sredstvo dodate v predelek za predpranje, čeprav predpranja niste izbrali, bo stroj uporabil pralno sredstvo med izpiranjem ali mehčanjem. Predal za pralno sredstvo operite in očistite z vročo vodo. Pralno sredstvo dodajte v ustrezen predelek.</li> </ul>
	Pralno sredstvo je morda pomešano z mehčalcem.	<ul style="list-style-type: none"> <li>Ne mešajte mehčalca s pralnim sredstvom. Predal za pralno sredstvo operite in očistite z vročo vodo.</li> </ul>
Ostanki pralnega sredstva v predalu za pralno sredstvo. (**)	Pralno sredstvo ste dodali v moker predal.	<ul style="list-style-type: none"> <li>Predal za pralno sredstvo posušite, preden vanj dodate pralno sredstvo.</li> </ul>
	Pralno sredstvo je vlažno.	<ul style="list-style-type: none"> <li>Pralna sredstva shranjujte v okolju, ki ni vlažno, in jih ne izpostavljajte prekomernim temperaturam.</li> </ul>
	Plak vode je nizek.	<ul style="list-style-type: none"> <li>Preverite tlak vode.</li> </ul>
	Pralno sredstvo v glavnem predelku za pranje se je zmočilo med dodajanjem vode za predpranje. Odprtine za predelek za pralno sredstvo so zamašene.	<ul style="list-style-type: none"> <li>Preverite odprtine in jih očistite, če so zamašene.</li> </ul>
	Obstaja težava z ventili predala za pralno sredstvo.	<ul style="list-style-type: none"> <li>Pokličite pooblaščenega serviserja.</li> </ul>
	Pralno sredstvo je morda pomešano z mehčalcem.	<ul style="list-style-type: none"> <li>Ne mešajte mehčalca s pralnim sredstvom. Predal za pralno sredstvo operite in očistite z vročo vodo.</li> </ul>
	Bobna niste redno čistili.	<ul style="list-style-type: none"> <li>Redno čistite boben. Za to glejte 4.4.2.</li> </ul>
V stroju se ustvarja preveč pene. (**)	Uporabljate neustrezna pralna sredstva za pralni stroj.	<ul style="list-style-type: none"> <li>Uporabite pralna sredstva, ki ustrezajo stroju pralnemu stroju.</li> </ul>
	Dodali ste prekomerno količino pralnega sredstva.	<ul style="list-style-type: none"> <li>Uporabljajte zadostno količino pralnega sredstva.</li> </ul>
	Pralno sredstvo je bilo shranjeno ob nepravilnih pogojih.	<ul style="list-style-type: none"> <li>Pralno sredstvo shranite na zaprtem in suhem mestu. Ne shranjujte ga na mestih, kjer se pojavljajo prekomerne temperature.</li> </ul>
	Pletene tkanine, kot je til, lahko povzročijo premočno penjenje.	<ul style="list-style-type: none"> <li>Za te vrste tkanin uporabite manj pralnega sredstva.</li> </ul>
	Pralno sredstvo ste dodali v napačen predelek.	<ul style="list-style-type: none"> <li>Pralno sredstvo dodajte v ustrezen predelek.</li> </ul>
	Mehčalec se je prehitro dodal k pranju.	<ul style="list-style-type: none"> <li>Morda obstaja težava z ventili ali v predalu za pralno sredstvo. Pokličite pooblaščenega serviserja.</li> </ul>

Težava	Vzrok	Rešitev
Pena se steka iz predala za pralno sredstvo.	Dodali ste preveliko količino pralnega sredstva.	<ul style="list-style-type: none"> <li>• Zmešajte 1 žlico mehčalca in ½ litra vode ter mešanico nalijte v predelek za pranje v predalu za pralno sredstvo.</li> </ul>
		<ul style="list-style-type: none"> <li>• V napravo dodajte pralno sredstvo glede na program in največjo količino perila, navedeno v "Preglednici programov in porabe". Če uporabite dodatne kemikalije (odstranjevalci madežev, belila itd.), zmanjšajte količino pralnega sredstva.</li> </ul>
Ob koncu programa je perilo mokro. (*)	Zaradi prevelike količine pralnega sredstva se lahko pojavi premočno penjenje in vklopi se sistem samodejnega odstranjevanja pene.	<ul style="list-style-type: none"> <li>• Uporabljajte priporočeno količino pralnega sredstva.</li> </ul>
(*) Stroj se ne preklopi v fazo centrifugiranja, če perilo v bobnu ni enakomerno porazdeljeno - zaščita pred poškodbami stroja in okolja. Perilo je treba znova porazdeliti in odviti.		
(**) Boben ni redno čiščen. Redno čistite boben. Glej 4.4.2		
	<b>POZOR:</b> Če kljub upoštevanju teh navodil ne uspete odpraviti težav, se posvetujte s prodajalcem oziroma pooblaščenim serviserjem. V nobenem primeru ne poskušajte sami popraviti stroja, ki ne deluje.	



[www.beko.com](http://www.beko.com)