

Main Cavity Energy Efficiency Class

A+

Height

59.5 cm

Display Type

Animated LED Screen

Colour

White

- Halogen Illumination: clear view of what's happening inside
- SoftDoor: smooth & quiet door opening & closing
- Sturdy door for carrying heavy dishes & cookware
- Telescopic Shelves: safe & easy-pull-out tray



Key Features

Product Type	60 cm	Height	59.5 cm
Width	59.4 cm	Depth	56.7 cm
Display Type	Animated LED Screen	Main Cavity Energy Efficiency Class	A+
Steam-cleaning	SteamShine	Main Cavity Oven Type	Multi-functional
Door Opening Type	Drop-down	Colour	White
Product Series	bPRO 500	Number of Functions	13
Main Cavity Volume	71 L		

Main Cavity Functions

Main Cavity Oven Type	Multi-functional	Number of Functions	13
Defrosting	Yes	Fan-assisted	Yes
Conventional Cooking	Yes	Pizza-cooking	Yes

Multi-dimensional Cooking	Yes	Electric Grill	Yes
Fan Heating	Yes	Fan Grilling	Yes
Eco Fan-heating	Yes	Warm Keeping	Yes
Half-grill	Yes	Steam-cleaning	Yes
Bottom Heating	Yes		

Standard Accessories

Telescopic Shelf Type	Single-level Telescopic Shelf	Number of Deep Trays	1
Number of Pastry Trays	1	Number of Standard Wire Racks	1

Cleaning

Steam-cleaning	SteamShine	Catalytic Back Wall	Yes
-----------------------	------------	----------------------------	-----

Technologies

Grill Type	Electric Grill	Cooling Fan	Yes
-------------------	----------------	--------------------	-----

Design

Type of Illumination	Halogen Illumination	SoftDoor	Yes
Display Type	Animated LED Screen	InDoor Cooking Guide	Yes
Removable Door Glass	Yes	Number of Cavities	1
Telescopic Shelf Type	Single-level Telescopic Shelf	Number of Shelf Levels	5-level Side Racks
Cavity Colour	Black Enamel	Door Opening Type	Drop-down
Colour	White		

Safety

Child Lock	Yes		
-------------------	-----	--	--

Performance & Consumption

Main Cavity Volume	71 L	Main Cavity Energy Efficiency Class	A+
Main Cavity Heat source	Electric	Total Electric Power	3100 W
Voltage	220 - 240 V	Frequency	50 Hz

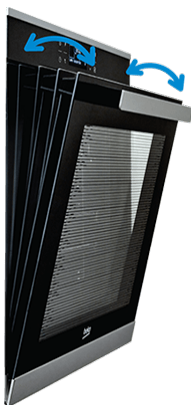
Dimensions & Weight

Height	59.5 cm	Width	59.4 cm
Depth	56.7 cm	Weight	36.6 kg
Packaged Height	65.5 cm	Packaged Width	66 cm
Packaged Depth	66 cm	Packaged Weight	39 kg
Niche Dimensions - Cabinet (WxDxH) (mm)	560×550×590	Niche Dimensions (W×D×H) (mm)	560×550×600

Halogen Illumination

Clear view of what's happening inside

Want to see how your cooking is going but don't want to open the door and lose the heat inside? Halogen Illumination helps you see all your oven's cavity, so you can keep an eye on your culinary creations with the door firmly shut.



SoftDoor

Smooth & quiet door opening & closing

When your hands are full, sometimes you can't help but have the oven door slam on you. SoftDoor features special hinges that slow down the shutting and opening of the oven door. No more prying the door open with your knee or elbow when your hands are full and no more loud noises in the kitchen.

Durable Door

Sturdy door for carrying heavy dishes & cookware

Hot, heavy dishes and pots can be difficult to get out of the oven. Durable Door supports loads as heavy as 22.5 kg. That's 20% more than standard oven doors so you can rest your piping hot pot on the open oven door while you take a breather.



Telescopic Shelves

Safe & easy-pull-out tray

If you find yourself struggling to get that heavy dish out of the oven, Telescopic Shelves will make your life easier. Its runner system lets you pull out the shelf all the way out (or 2/3 of it, for partial Telescopic version) of the oven while supporting your dish.